



MAKING EVERY DROP COUNT

GLOBAL SOLUTIONS FOR THE LUBRICATION & REFUELLING MARKETS

A-FLO
EQUIPMENT

GENERAL RANGE CATALOGUE 2022



MELBOURNE | SYDNEY | BRISBANE | PERTH | DARWIN | ADELAIDE | HOBART

OIL EQUIPMENT & ACCESSORIES	3-12
ULTRAFLO Hand Operated Oil Pumps	4
ULTRAFLO Spring Operated Oil Pumps	4
ULTRAFLO Lever Action Oil Drum Pumps	4
ULTRAFLO Standard Rotary Barrel Pumps	4
ULTRAFLO Heavy Duty Rotary Barrel Pumps	4
EZI-Action Drum Pumps	5
Level Gauge	5
Air Operated Oil Pumps	5
Oil Distribution Kits	5-6
RAASM IBC Kits	6
RAASM Diaphragm Pumps	6
Oil Reels	6-7
Oil Control Guns	7
Oil Transfer Accessories	7-9
Waste Oil Drainers	9
Oil Filter Crusher	10
Oil Equipment Accessories	10-11

GREASE EQUIPMENT & ACCESSORIES	13-24
Hand Operated Grease Gun	14
Hand Air Operated Grease Guns	14
Battery Operated Grease Gun	15
Hand Operated Bulk Grease Pumps	15
Air Operated Grease Pump Kit	15-16
Grease Gun Couplers & Flex Hose	16
Grease Nipples	17
Grease Gun Accessories	17-18
Grease Gun & Swivel	18
Hose Reels	18
Auto Lubrication Systems & Fittings	18-23

DIESEL EQUIPMENT & ACCESSORIES	25-34
ULTRAFLO Rotary Drum Pumps	26
Refuelling Pumps & Kits	26-27
Transfer Pumps	27
Diesel Flow Meters	28
Hose Reels	29
Fuel Nozzles & Swivels	29 - 30
Fuel Tank Fittings & Accessories	30-31
Bowsters & Fuel Management Systems	31-32
Petrol Driven & Diesel Driven Transfer Pumps	32
Filters	32-33
Level Indicators	33
Fuel Gloves	33
Diesel Tanks	33

ADBLUE EQUIPMENT & ACCESSORIES	35-39
Rotary Drum Pump	36
Gravity Feed Kit	36
Pumps & Kits	36 - 37
Nozzles	37-38
Flow Meters	38
Accessories	38-39
Hose Reels	38-39
Poly Tanks	39
Level Indicators & Alarms	39

AIR AND WATER EQUIPMENT	40-42
Mini Sprayers	41
Rotary Pumps	41
Water Valve	41
Hose Reel	41-42

SPECIALTY REELS	43
RAASM Air & Water Reels	43
RAASM 240V Electric Cable Reel	43
ULTRAFLO Barrier Reels	43

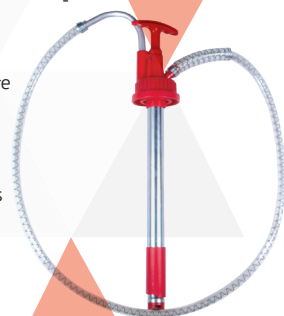
WORKSHOP EQUIPMENT	44-47
Trolleys	45
Dollies	45
Spill Pallets	45
Liquid Adhesive	46
Drum Wrench	46
Drum Cradle	46
Spill Kits	46
Oil Absorbent	46

DISCLAIMER: Although every care is taken to ensure accuracy and completeness in compiling this data, no liability can be accepted by A-FLO Equipment Pty Ltd for damage or loss caused by any errors or omissions in the information given, either directly or indirectly. Suitability of products referred to in this catalogue is the customers sole responsibility. Always refer to technical data to confirm suitability which is available on request from A-FLO Equipment Pty Ltd. E & O E.



ULTRAFLO Hand Operated 20L Oil Pumps

- Easy Downstroke Displacement
- High Quality Components to ensure smooth pump action
- Telescopic Extension
- Approx. 14 strokes per litre
- Ideal pump for the transfer of engine, gear, diff and hydraulic oils



AP-1335
20L Oil Pump without Hose

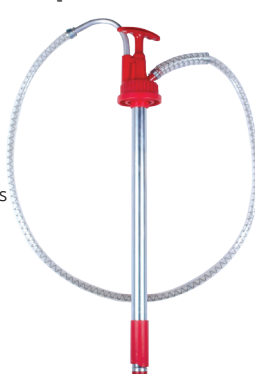
AP-1336B
20L Oil Pump with Hose

AP-1337B
20L Oil Pump with hose & 7 Drum Adaptor

AP-1338
20L ATF Pump with Hose

ULTRAFLO Hand Operated 60L Oil Pumps

- Easy Downstroke Displacement
- High Quality Components to ensure smooth pump action
- Telescopic Extension
- Approx. 14 strokes per litre
- Ideal pump for the transfer of engine, gear, diff and hydraulic oils



AP-1324
60L Oil Pump without Hose

AP-1325
60L Oil Pump with Hose

AP-1328
60L ATF Pump with Hose

ULTRAFLO Spring Operated Oil Pumps

- Spring Operated Pump with Lever Action Oil Control Valve
- 1.5m of Anti Kink Hose
- Provides an Economical, Efficient solution for mechanics to perform oil changes rapidly



AP-520H
20L Oil Pump with Hose

AP-560H
60L Oil Pump with Hose

ULTRAFLO Lever Action Oil Drum Pump

- Lightweight aluminium construction
- Approximately 3 strokes per litre
- Telescopic suction pipe
- 2" bung thread
- Suitable for 60L or 205L drums



AP-1316
60-205L Lever Action Oil Pump

ULTRAFLO Standard Rotary Barrel Pumps

- Solid cast iron construction
- Approx. 3 revolutions per litre
- 3 piece steel suction pipe & 2" Bung Adaptor
- Suitable for most motor oils & diesel
- Not recommended for petrol or gear oil



AP-2220
205L Rotary Oil Pump

AP-2220H
205L Rotary Oil Pump, Hose, Nozzle

ULTRAFLO Heavy Duty Rotary Barrel Pumps

- Solid aluminium construction
- Approx. 3 revolutions per litre
- 3 piece steel suction pipe & 2" bung adapter
- Suitable for petrol, diesel & motor oils



AP-1321
HD 205L Rotary Oil Pump

AP-1321H
HD 205L Rotary Oil Pump, Hose, Nozzle

EZI-Action Drum Pumps

- Output per stroke 20L 160ml
- Output per stroke 205L & 1000L 400ml
- Delivers on the up and down stroke
- Superior chemical resistance and anti-corrosion technology
- The only serviceable hand pump in the world, which acts to extend its lifespan
- Not suitable for solvent based products



EZ-25/5
Ezi-Action 25L Drum Pump

EZ-205/550
Ezi-Action 205L Drum Pump

EZ-1000/220
Ezi-Action 1000L IBC Drum Pump with 4 Adaptors

RAASM 1:1 Ratio Pumps

- Flow Rates: up to 40L/min
- Air inlet 1/4" BSP(f)
- Fluid Outlet: 3/4" BSP(f)
- Ideal for low viscosity transfer of fluids such as oil, waste oil, antifreeze & coolant



RA-33071
RAASM 1:1 Ratio Stub Pump

RA-33073
RAASM 1:1 Ratio 205L Drum Pump

RAASM 5:1 Ratio Pumps

- Flow Rate: up to 18L/Min
- Air inlet 1/4" BSP(f)
- Fluid Outlet: 1/2" BSP(f)
- For large size workshops which may involve multiple hose reels with manual & metered guns



RA-36061
RAASM 5:1 Ratio Stub Pump

RA-36096
RAASM 5:1 Ratio 205L Drum Pump

ULTRAFLO Oil Drum Level Gauge

- Unique mechanical measuring gauge showing the fluid level in a 205L Drum
- Fits the standard 3/4" bung opening
- Suitable for oil, diesel, petrol, water, coolant, ATF, waste oil & some chemicals
- Allows for easy and simple stock keeping
- Made in Europe



FG-205
205L Drum Level Gauge

RAASM 3:1 Ratio Pumps

- Flow Rate: up to 14L/Min
- Air inlet 1/4" BSP(f)
- Fluid Outlet: 1/2" BSP(f)
- For medium size workshops which may involve multiple hose reels with manual & metered guns

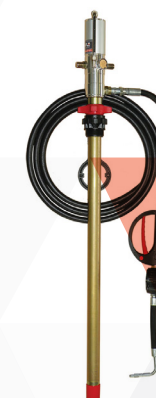


RA-35161
RAASM 3:1 Ratio Stub Pump

RA-35196
RAASM 3:1 Ratio 205L Drum Pump

RAASM 205L Oil Distribution Kits

- RAASM 3:1 or 5:1 Ratio Drum Pump
- 4M Hose Kit
- Manual or Metered Oil Control Gun
- 1/4" Air Regulator



OA205K1
3:1 Manual Oil Distribution Kit

OA205K2
5:1 Manual Oil Distribution Kit

OA205K3
3:1 Metered Oil Distribution Kit

OA205K4
5:1 Metered Oil Distribution Kit

RAASM 205L Mobile Oil Distribution Kits

- Mobile Trolley Kit
- 3:1 or 5:1 Ratio Pump
- 4M x 1/2" Distribution Hose
- Manual or Metered Oil Control Gun
- Note: 205L drum not included



OAMTK1
3:1 Mobile Trolley Kit Manual Gun

OAMTK2
5:1 Mobile Trolley Kit Manual Gun

OAMTK3
3:1 Mobile Trolley Kit Metered Gun

OAMTK4
5:1 Mobile Trolley Kit Metered Gun

RAASM 205L Mobile Oil Distribution Kits with Hose Reel

- Mobile Trolley Kit
- 3:1 or 5:1 Ratio Pump
- 10m x 1/2" Hose Reel
- Manual or Metered Oil Control Gun
- Note: 205L drum not included



OAMTKR1
3:1 Mobile Trolley Kit with Hose Reel Manual Gun

OAMTKR2
5:1 Mobile Trolley Kit with Hose Reel Manual Gun

OAMTKR3
3:1 Mobile Trolley Kit with Hose Reel Metered Gun

OAMTKR4
5:1 Mobile Trolley Kit with Hose Reel Metered Gun

RAASM 430 Series Oil Reels

- Can be roof, wall or bench mounted
- Equipped with 0.6m connection hose
- 1/2" BSP (f) inlet & 1/2" BSP (m) outlet connection
- Pressure rating: 150Bar
- Carbon steel swivel



RA-8430.401
RAASM 430 Series Oil Reel 10M x 1/2" ID Hose

RA-8430.402
RAASM 430 Series Oil Reel 15M x 1/2" ID Hose

RAASM Manual Oil Gun

- Aluminum and cast alloy control valves for engine and gear oils including a high flow non drip nozzle
- Max. operating pressure: 1500PSI
- 1/2" BSP (f) swivel
- Flow Rates: up to 40L/Min



RA-38022
RAASM Manual Oil Gun, Flexible Outlet

RAASM Side Mounted IBC Kit

- RAASM 3:1 or 5:1 Ratio Pump
- Front Mount Bracket
- 4M x 1/2" Oil Delivery Hose
- Manual or Metered Oil Control Gun
- IBC Suction Kit with adapter
- Note: IBC not included



OAIBCS1
RAASM 3:1 Ratio IBC Kit with Manual Gun

OAIBCS2
RAASM 5:1 Ratio IBC Kit with Manual Gun

OAIBCS3
RAASM 3:1 Ratio IBC Kit with Metered Gun

OAIBCS4
RAASM 5:1 Ratio IBC Kit with Metered Gun

RAASM Top Mounted IBC Kit

- RAASM 3:1 or 5:1 Ratio Pump
- IBC Top Mount Bracket
- 10m x 1/2" Hose Reel
- Manual or Metered Oil Control Gun
- Optional extra: Drip Tray
- Note: IBC not included



OAIBCTR1
RAASM 3:1 Ratio IBC Kit with Manual Gun

OAIBCTR2
RAASM 5:1 Ratio IBC Kit with Manual Gun

OAIBCTR3
RAASM 3:1 Ratio IBC Kit with Metered Gun

OAIBCTR4
RAASM 5:1 Ratio IBC Kit with Metered Gun

RAASM Digital Metered Oil Gun

- 1/2" Inlet swivel joint with filter
- Flexible extension with semi-automatic nozzle
- Premium oil gun with totalizer and non re-settable total
- Suitable for flow rates up to 40L/Min



RA-37758
RAASM Digital Metered Oil Gun, Flexible Outlet

ULTRAFLO Metered Oil Control Gun

- 1-30L/Min
- 1/2" BSP (f) Swivel
- ±0.5% Accuracy
- Battery Powered CR123A
- Manufactured in Germany
- Totaliser and resettable total
- Flexible outlet



A-102111B
ULTRAFLO Metered Oil Control Gun, Flexible Outlet

RAASM Diaphragm Pumps

- Exceptional quality & performance
- Self-priming
- 10 year warranty
- Suitable for oil, waste oil, coolant & diesel



RA-3C1/16111NHH
RAASM 3/4" Series Aluminium Pump 70L/min

RA-3C1/26111NHH
RAASM 1" Series Aluminium Pump 170L/min

RAASM 440 Series Oil Reels

- Unique smooth & trouble-free operation
- Equipped with 0.6m connection hose
- Bracket enables easy installation (option of swivel or fixed)
- In position, it can freely turn 55° right and left
- 1/2" BSP (f) inlet & 1/2" BSP (m) outlet connection
- Pressure rating: 150Bar



RA-9440.401
RAASM 440 Series Oil Reel 10m x 1/2" ID Hose

RA-9440.402
RAASM 440 Series Oil Reel 15m x 1/2" ID Hose

ULTRAFLO Preset Electronic Meter

- Pre-select: up to 999L
- Two programmable pre-set volumes
- Large easy to read display
- Accuracy: 0.5%
- Flow Rate: 1-30L/Min
- 1/2" BSP (f) inlet
- Flexible outlet



A-102109B
ULTRAFLO Electronic Preset Meter, Flexible Outlet

ULTRAFLO Multi-Purpose Bottle Pump

- 1L capacity, 500mm long PVC hose & spout
- Ideal for topping up difficult to access oiling points in the workshop or garage
- Self-contained preventing oil contamination whilst not in use
- Applications: agricultural, earthmoving, industrial, mining, transport, workshops & service garages



AP-8100
1L Multi-Purpose Bottle Pump

ULTRAFLO Oil Bottles

- Available in 1L Multi-Purpose Oil Bottles
- Re-usable oil bottle provides environmentally friendly means of dispensing oil
- Non-breakable impact resistant materials
- Weights and measures approved
- Comes with pourer and cap or can be purchased separately
- Available in Red, Black and Green



- OB-1000-BLK**
1L Multi-Purpose Oil Bottle (Black)
- OB-1000-RED**
1L Multi-Purpose Oil Bottle (Red)
- OB-1000-GRE**
1L Multi-Purpose Oil Bottle (Green)

ULTRAFLO Oil Measuring Jugs

- Plastic measuring jug
- Flexible delivery spout
- Hinged protection lid
- Makes topping up of fluids easy & convenient



- AP-2348**
1 Litre Measuring Bottle with Flexible Outlet
- AP-3348**
2 Litre Measuring Bottle with Flexible Outlet
- AP-4348**
3 Litre Measuring Bottle with Flexible Outlet
- AP-5348**
5 Litre Measuring Bottle with Flexible Outlet

OILSAFE 5L Drum with Stumpy Spout

- Encourages clean, safe, organized & efficient practices
- Prevents contaminants from getting into the oil
- Complete with a 5L Oilsafe Drum, Stumpy Spout
- Ten colours available



- OS-1010055**
5L Oil Jug with Stumpy Spout

OILSAFE 10L Drum with Hand Pump

- Encourages clean, safe, organized & efficient practices
- Prevents contaminants from getting into the oil
- Complete with a 10L Oilsafe Drum, utility lid & hand pump
- Hand pump ideal for hard to reach places & pumping applications like gearboxes
- Ten colours available



- OS-101010P**
10L Oil Jug with Utility Lid & Hand Pump

ULTRAFLO Multi-Purpose Funnel

- Made of high density polyethylen
- Suitable for all oils & fuels
- High flow rate
- Easy to clean and maintain



- AP-7238**
1.3L Capacity Polyethylene Funnel - 160mm
- AP-8238**
2.0L Capacity Polyethylene Funnel - 195mm
- AP-9238**
3.0L Capacity Polyethylene Funnel - 235mm
- AP-0238**
3.2L Capacity Polyethylene Funnel - 250mm

ULTRAFLO Garage Funnel

- 4.0L Funnel
- Polyethylene
- Chemical and Oil Resistant



- AP-5338**
4.0L Polyethylene Chemical and Oil Resistant

ULTRAFLO Manual Waste Oil Extractor

- 6.5L capacity
- Supplied with 3 suction probes (5.9mm, 6.9mm & 9.9mm OD)
- Simple hand pump creates suction to extract the fluid



- AP-MW0E6.5**
6.5L Manual Waste Oil Extractor

ULTRAFLO Manual Oil Suction Gun

- 500cc capacity
- Ideal for the draining and filling of diffs, gear boxes & engine blocks
- 2 Year Warranty



- AP-5010**
ULTRAFLO Manual Oil Suction Gun

RAASM Mobile Waste Oil Drainer

- Anti-splash screen filter
- Removable tool tray
- Available in 65L, 90L capacity
- Drain bowl capacity of 15L
- Level Indicator with scale in litres and gallons



- RA-42065**
65L Mobile Waste Oil Drainer
- RA-42090**
90L Mobile Waste Oil Drainer

RAASM Mobile Waste Oil Drainer and Extractor

- Anti-splash screen filter
- Removable tool tray
- Available in 65L, 90L capacity
- Drain bowl capacity of 15L
- Level Indicator in litres & gallons
- Supplied with 6 probes



- RA-44060**
65L Mobile Combination Oil Suction & Drainer Unit
- RA-44090**
90L Mobile Combination Oil Suction & Drainer Unit

RAASM Low Level Floor Waste Oil Drainers

- Wheel mounted floor waste oil drainers suitable for gravity draining of engine, gearbox & diff oils from all vehicles
- Anti-splash screen which can be used as a support for draining oil filters
- Ideal for a busy workshop environment



- RA-42069**
RAASM Heavy Duty 50L Low Level Drainer
- RA-42072**
RAASM Heavy Duty 95L Low Level Drainer
- RA-42075**
RAASM Heavy Duty 150L Low Level Drainer

ULTRAFLO Low Level Floor Waste Oil Drainers

- Wheel mounted floor waste oil drainers suitable for gravity draining of engine, gearbox & diff oils from all vehicles
- Anti-splash screen which can be used as a support for draining oil filters
- Ideal for a busy workshop environment



- AP-5427**
ULTRAFLO Standard 68L Low Level Drainer
- AP-6427**
ULTRAFLO Standard 95L Low Level Drainer

GRAY Automotive Oil Filter Crusher

- Extracts up to 95% of used oil from the filter
- Interlocking feature prevents door from opening until the ram is fully retracted
- 100% Air operated - ensures maximum efficiency for the crushing of the oil filter
- Mounting stand included



GM-QP-50
GRAY Automotive Oil Filter Crusher

GRAY Oil Filter Crusher

- Extracts up to 95% of used oil from the filter
- Interlocking feature prevents door from opening until the ram is fully retracted
- 100% Air operated - ensures maximum efficiency for the crushing of the oil filter
- Mounting stand included



GM-QP-160
GRAY Air Operated Filter Crusher

RAASM 4 Way Evacuation Valve

- 4-Directional Control Valve used to simplify the filling and emptying of tanks
- Simplifies installation by eliminating need for multiple valves
- Unrestricted flow, no pressure or volume loss
- Two position tank fill and emptying control
- Provide a professional look, reduces pipework & installation time



RA-38131
RAASM 1" BSP (f) 4-Way Evacuation Valve

RA-38132
RAASM 1 1/2" BSP (f) 4-Way Evacuation Valve

RAASM Oil Bar

- Tap closes automatic when release lever
- Oil Dispensing Bar up to 3 products
- Digital meter not included



RA-37690
RAASM Oil Bar with 1 Tap

RA-37689
RAASM Oil Bar with 2 Tap

RA-37688
RAASM Oil Bar with 3 Tap

RA-37692
RAASM Extra Valve Tap

ULTRAFLO Inline Digital Meter

- Robust aluminium construction
- Easy to read and re-settable
- 2yr average battery life (battery CR123A)
- Flow Rates: up to 30L/Min
- Max. Pressure: 100 bar
- Accuracy: ± 0.5% of reading



A-102100B
ULTRAFLO 1/2" Inline Digital Oil Meter

RAASM Oil Dispensing Valve

- The valve is mounted directly onto the pump outlet
- To be used for filling oil jugs and bottles
- Oil Dispensing Valve only - 3/4" connection thread



RA-37683
Oil Dispensing Valve - 3/4" Connection Thread

Air Regulators

- Supply clean & compressed air to equipment
- Maintain steady outlet pressure
- Die Cast Aluminium



PS-REG-02
1/4" Air Regulator Gauge

PS-REG-04
1/2" Air Regulator Gauge

PS-FRE-02
1/4" Air Filter Regulator & Gauge

PS-FRE-04
1/2" Air Filter Regulator & Gauge

PS-FRL-02
1/4" Air Filter Regulator & Lubricator

PS-FRL-04
1/2" Air Filter Regulator & Lubricator

Inline Pressure Relief Valve

- Adjustable between 5-50Bar (73-725 PSI)
- M/F hydraulic connections inlet & outlet
- Non-directional (flow either direction)
- Drain connection 1/4" BSP (f) -8mm hose tail included



ST-PRV12
1/2" Pressure Relief Valve Body & Cartridge

A-FLO High Level Oil Tank Alarm

- Suitable for steel or plastic tanks
- Suitable for oil, diesel & water
- High power alarm sounder 97dB at 1M
- Flashing light on top of unit
- Mute button stops the sounder & light still flashes
- Float switch supplied with 5M cable
- 2 year battery life, if tested weekly with no alarms



HFE-HLA001
A-FLO High Level Diesel/Oil Alarm

Multi-Tanks Self Bunded Oil / Diesel Tanks

- Self bunded, low cost, slimline, zinc coated tank with polypropylene inner tank
- Level indicator & leak detector device
- Breather, filler & decals
- Forkliftable



EM-7381MT
750L Multi Tank (980L x 770W x 1460H)

EM-7382MT
1000L Multi Tank (1280L x 800W x 1460H)

EM-7539MT
1500L Multi Tank (1630 x 770W x 1870H)

Custom Made New Oil Tanks

A-FLO's Heavy Duty Bulk Oil Tanks provide an excellent solution to replace drums or IBC's and bring a professional and clean look to your workshop. Whether it be for new oil, coolant or waste oil. We can customise Bulk Oil Tanks to suit your workshop.

Features & Benefits

- Spill box with lid (self bunded tanks only)
- Tank fitted with Fill Point, Breathers & Dipstick
- Forkliftable
- Powder coated finish (custom colours available)



MADE IN AUSTRALIA



OILSAFE 5L Stumpy Drum Kit

- Features & Benefits
- This wide spout model with a 1" opening is designed for applications where a higher lubricant flow is required. Match with a Stumpy Extension Hose to help with hard to reach fill points
 - Robust lid design for easy handling
 - Quick twist spout is easy to open and close
 - Controls flow and keeps dirt out
 - Push button auto shut-off air intake enables smooth pouring of lubricants
 - Makes lubrication work easier, faster, safer & cleaner
 - Protects expensive lubricants from contamination
 - Reduces machinery downtime
 - Improves productivity
 - Increases bottom line savings
 - Improves OSHA compliance

- Is proven, simple & reliable
 - Has withstood the rigors of the most demanding work environments
- Applications
- Workshops
 - On-site servicing
 - Agriculture, earthmoving, industrial, mining, transport

Part No	Description
OS-101005S-Y	5L OILSAFE Jug with Stumpy Spout Lid - Yellow
Available in 10 colours: beige, black, blue, dark green, grey, green, orange, purple, red & yellow	



ULTRAFLO Standard Duty Lever Action Grease Gun

- Complete with a rigid outlet & 4 jaw coupler
- Fitted standard with air valve & bulk filler
- Develops up to 4,500 PSI



AP-1142-450
Standard Lever Action Grease Gun - 450g

ULTRAFLO Standard Duty Pistol Grip Grease Gun

- Complete with a 300mm flexible outlet & 4 jaw coupler
- Fitted standard with air valve & bulk filler
- Develops up to 4,500 PSI



AP-1152-450
Standard Pistol Grip Grease Gun - 450g

ULTRAFLO Heavy Duty Lever Action Grease Gun

- Professional grease gun for industrial applications
- Develops 10,000 PSI/690 Bar
- Robust Aluminum die cast grease gun head and filler
- Rigid Outlet with pro 4 jaw coupler



UF-L450
HD Lever Action Grease Gun - 450g

ULTRAFLO Heavy Duty Variable Pistol Grip Grease Gun

- Ergonomic one hand grease gun
- Unique variable stroke for both high pressure and high volume applications
- Complete with 300mm flexible outlet & pro 4 jaw coupler
- Develop grease pressures up to 8000PSI



UF-P450
HD Variable Pistol Grip Grease Gun - 450g

ULTRAFLO Speedy Grease Gun

- Operating pressure: up to 800bar (11,200 PSI)
- 2.5cc of grease per stroke
- Fitted with 60kg magnet
- 800mm flexible hose extension with grease coupler



SGS-450
Speedy Grease Gun - 450g

ULTRAFLO Air Operated Grease Gun

- High pressure delivery performance of up to 3800PSI
- Continuous grease flow operation
- Complete with rigid outlet & 4 jaw coupler



AP-1161
Air Operated Grease Gun - 450g

ULTRAFLO Battery Operated Grease Guns

- 18V Cordless Grease Gun
- 2 x lithium ion battery
- Complete with robust carry case
- Max. Operating Pressure: 10000PSI



AP-4349LI-2
18V Lithium Ion Electric Grease Kit - 450g

ULTRAFLO 2.5kg Mini Hand Operated Grease Pump Kit

- Foot operated spring plunger
- 3M of high pressure hose & hand piece for high pressure and high volume applications
- Delivers up to 10,000PSI



AP-2290
Mini Grease Pump Kit - 2.5kg

ULTRAFLO 20KG Air Operated Grease Pump Kit

- Your cost effective and dependable solution to easier greasing of plant and equipment
- The ULTRAFLO Kit is in for the long haul and will withstand all you throw at it plus it is sure to meet your budget
- 58:1 Ratio High Pressure Pump
- Kit complete with pump, follower plate, drum cover, 4M hose and grease gun with Z swivel



AE-KP7247PZ
58:1 Ratio Grease Pump Kit - 20kg

ULTRAFLO Hand Operated Bucket Grease Pumps

- Robust construction
- Complete with universal follower plate
- Easy to use grease filling solution to load bulk or combination grease guns



UF-GFP-20
Hand Operated Bucket Pump - 20Kg

ULTRAFLO 20kg Handle Grease Kit

- Spring operated plunger
- 3M of high pressure hose & hand piece for high pressure and high volume applications
- Delivers up to 10,000PSI



AP-3290
T Handle Grease Pump Kit - 20kg

ULTRAFLO 180KG Air Operated Grease Pump Kit

- Your cost effective and dependable solution to easier greasing of plant and equipment
- The ULTRAFLO Kit is in for the long haul and will withstand all you throw at it plus it is sure to meet your budget
- 58:1 Ratio High Pressure Pump
- Kit complete with pump, follower plate, drum cover, 4M hose and grease gun with Z swivel



AE-KP7294SCZ
58:1 Ratio Grease Pump Kit - 180kg

RAASM 50:1 Ratio Air Operated Grease Kit

- Kit complete with pump, follower plate, drum cover, 4M hose and grease gun with Z swivel
- 50:1 Ratio Pump
- Your heavy duty & ever reliable solution



- RA-64031**
RAASM 50:1 Ratio Air Operated Grease Kit - 20kg
- RA-64145**
RAASM 50:1 Ratio Air Operated Grease Kit - 60kg
- RA-64195**
RAASM 50:1 Ratio Air Operated Grease Kit - 180kg

ULTRAFLO Grease Pump Trolley Kit

- Increases the efficiency in your busy workshop with an easy to use mobile grease trolley distribution kit
- These grease trolleys allow great flexibility to move your drums around the workshop with ease
- 58:1 high pressure grease pump



- O-MTKG2**
ULTRAFLO Grease Pump Trolley Kit 4m Hose - 180Kg
- O-MTKG1R**
ULTRAFLO Grease Pump Trolley Kit 10m Reel - 180Kg

ULTRAFLO Grease Fitting Thread Tester

- Easily identify thread patterns for all common standard, British and metric grease fittings
- Made of aluminium



- GR-305016**
ULTRAFLO Grease Fitting Thread Tester

ULTRAFLO Grease Nipple Assortment Kits

- Refillable compartmentalized carry kit
- Available in kits suited to agricultural, industrial, metric, automotive & stainless steel applications



- UF-4674**
Agricultural Grease Nipple Assortment Kit 120Pcs
- UF-4675**
Imperial Grease Nipple Kit 110Pcs
- UF-4676**
Metric Grease Nipple Assortment Kit 100Pcs

RAASM 50:1 Grease Trolley Distribution Kits

- Increases the efficiency in your busy workshop with an easy to use mobile grease trolley distribution kit
- These grease trolleys allow great flexibility to move your drums around the workshop with ease
- 50:1 high pressure grease pump
- Heavy duty, 10 year warranty



- OAMTKG3**
RAASM Mobile Grease Trolley Kit, 4m Hose - 180kg
- OAMTKG3R**
RAASM Mobile Grease Trolley Kit, 12m Reel - 180kg

ULTRAFLO Quick Release Grease Coupler

- No leakage
- No lever needed
- Quick grip onto any sized nipple
- Allows both hands for grease gun operation
- Maximum pressure 15,000PSI
- 1/8" BSP (f) thread



- UC-2020**
ULTRAFLO Quick Release Grease Coupler w Relief Valve
- UC-2121**
ULTRAFLO Quick Release Grease Coupler

ULTRAFLO Grease Nipple Packs

- High quality zinc plated & case hardened mild steel body to help with corrosion resistance
- Heat treated springs for increase life
- Pack of 10 pieces



- UF-L29**
1/8" BSP Straight Grease Nipple
- UF-L28**
1/8" NPT Straight Grease Nipple
- UF-L48**
1/4" BSP Straight Grease Nipple
- UF-AL185**
1/4" UNF Straight Grease Nipple

- UF-LA34**
1/8" BSP 45 Degree Grease Nipple
- UF-LA44**
1/8" BSP 90 Degree Grease Nipple
- UF-LA43**
1/8" NPT 90 Degree Grease Nipple
- UF-LA189**
1/4" UNF 90 Degree Grease Nipple
- UF-L161**
6M x 1 Straight Grease Nipple
- UF-L162**
8M x 1 Straight Grease Nipple
- UF-AL200**
10M x 1 Straight Grease Nipple
- UF-ALA168**
6M x 1 x 45 Degree Grease Nipple
- UF-ALA165**
6M x 1 x 90 Degree Grease Nipple

ULTRAFLO Heavy Duty 4 Jaw Grease Coupler

- Hardened body that withstands high pressure without deformation
- Hexagonal nut for easy tightening
- 4 jaw coupler with 1/8" BSP
- Easy on and off long life coupler



- UF-HC4J**
ULTRAFLO Heavy Duty 4 Jaw Grease Coupler

ULTRAFLO Heavy Duty Grease Gun Extension

- Quality German construction
- Suitable for hand or air operated equipment
- Working Pressure: 5800PSI
- Burst Pressure: 13,750PSI



- UF-GH300**
ULTRAFLO 300mm HD Grease Gun Extension
- UF-GH450**
ULTRAFLO 450mm HD Grease Gun Extension
- AP-1210C**
ULTRAFLO Rigid Extension with Coupler

ULTRAFLO Right Angle Coupler

- 90 Degree Right Angle Coupler
- 1/8" BSP



- UF-RAGC013**
90 Degree Right Angle Coupler 1/8" BSP

ULTRAFLO Grease Injector Needle

- Perfect tool to provide grease in very tight places, such as universal joints & sealed bearings



- UF-GIN01**
ULTRAFLO Grease Injector Needle with Nipple

ULTRAFLO Needle Nose Dispenser

- Used to dispense a fine line of grease
- Narrow design for hard to reach fittings in inaccessible areas



- UF-NND013**
Needle Nose Dispenser 1/8" BSP
- UF-PNND05**
Narrow Needle Nose Dispenser 1/8" BSP

RAASM Grease Gun & Z-Swivel

- Ergonomic design
- 1/4" BSP(f) inlet thread
- Available with flexible or rigid extension



- RA-66889**
RAASM Grease Gun with Z Swivel
- AE-S14Z**
RAASM Standard 1/4" BSP Z Swivel

RAASM 440 Series Grease Reels

- Unique smooth & trouble free operation
- Equipped with 0.6m Connection Hose
- Bracket enables easy installation (option of swivel or fixed)
- 3/8" BSP (f) inlet & 1/4" BSP (m) outlet connection
- Pressure rating: 600Bar



- RA-9440.501**
RAASM 440 Series Grease Reel 12m x 1/4" ID Hose
- RA-9440.502**
RAASM 440 Series Grease Reel 18m x 1/4" ID Hose
- RA-9440.506**
RAASM 440 Series Grease Reel 15m x 3/8" ID Hose

RAASM 430 Series Grease Reels

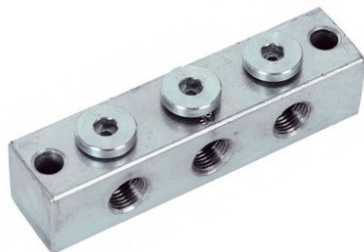
- Can be roof, wall or bench mounted
- Equipped with 0.6m Connection Hose
- 3/8" BSP (f) inlet & 1/4" BSP (m) outlet connection
- Pressure rating: 600Bar



- RA-8430.501**
RAASM 430 Series Grease Reel 12m x 1/4" ID Hose
- RA-8430.502**
RAASM 430 Series Grease Reel 18m x 1/4" ID Hose
- RA-8430.506**
RAASM 430 Series Grease Reel 15m x 3/8" ID Hose

Remote Grease Anchor Blocks

- T-drilled install the grease straight or 90 degrees to the grease nipple.
- Supplied without 1/8" BSP Straight grease nipples



- LC-99-RGB1**
1 point 10 x 1 Grease Block
- LC-99-RGB2**
2 point 10 x 1 Grease Block
- LC-99-RGB3**
3 point 10 x 1 Grease Block
- LC-99-RGB4**
4 point 10 x 1 Grease Block
- LC-99-RGB5**
5 point 10 x 1 Grease Block
- LC-99-RGB6**
6 point 10 x 1 Grease Block
- LC-99-RGB8**
8 point 10 x 1 Grease Block

Remote Grease Anchor Blocks with Grease Nipples

- T-drilled install the grease straight or 90 degrees to the grease nipple.
- Supplied with 1/8" BSP Straight grease nipples



- LC-99-RGB1-C**
1 point 10 x 1 Grease Block with 1/8" BSP Nipples
- LC-99-RGB2-C**
2 point 10 x 1 Grease Block with 1/8" BSP Nipples
- LC-99-RGB3-C**
3 point 10 x 1 Grease Block with 1/8" BSP Nipples
- LC-99-RGB4-C**
4 point 10 x 1 Grease Block with 1/8" BSP Nipples
- LC-99-RGB5-C**
5 point 10 x 1 Grease Block with 1/8" BSP Nipples
- LC-99-RGB6-C**
6 point 10 x 1 Grease Block with 1/8" BSP Nipples
- LC-99-RGB8-C**
8 point 10 x 1 Grease Block with 1/8" BSP Nipples

Nylon Tube Semi-Rigid

- 25M x 6mm high pressure nylon grease hose
- Suitable for 6mm push in grease fitting connectors



- LC-99-PT25M**
25m x 6mm High Pressure Tube - Empty
- LC-99-PT100M**
100m x 6mm High Pressure Tube - Empty
- LC-99-PT25MGF**
25m x 6mm High Pressure Tube - Grease Filled
- LC-99-PT100MGF**
100m x 6mm High Pressure Tube - Grease Filled

Straight Compression Connector

- Suits 6mm hose



- LC-99-C6M**
6mm x 6mm Straight Connector
- LC-99-C6MSS**
6mm x 6mm Stainless steel Straight Connector

90 Degree Compression Fitting

- Suits 6mm hose
- 90° fitting



- LC-99-CF906M**
90° M6/1 x 6mm
- LC-99-CF906MSS**
M6 x 6mm Stainless Steel
- LC-99-CF908M**
M8/1 x 6mm Stainless Steel
- LC-99-CF908MSS**
M8x1 x 6mm Stainless Steel
- LC-99-CF9010M**
M10/1 x 6mm
- LC-99-CF901/8**
1/8 BSP x 6mm T
- LC-99-CF901/8SS**
1/8 BSP x 6mm Stainless Steel

Hose Stud 45 Degree

- Suits 8.6mm hose
- Requires Screw Sleeve
- 45 Degree



LC-99-HS456M

6mm Hose Stud (24 x 15)

LC-99-HS456MCG

6mm Hose Stud with Claw Groove (24 x 15)

Hose Stud Connector Straight Fitting

- Suits 8.6mm & 11.3mm



LC-99-HSS20M

6mm Hose Stud (20mm)

LC-99-HSS30M

6mm Hose Stud (30mm)

LC-99-HSS65M

6mm Hose Stud (65.5mm)

LC-99-HSS20M11

8.6mm Hose Stud (20mm)

LC-99-HSS08M

8.6mm Hose Stud Connector (21.5mm)

Screw Sleeve Fitting

- Suits 8.6mm & 11.3mm hose



LC-99-SS

8.6mm Sleeve

LC-99-SSSS

8.6mm Stainless Sleeve

LC-99-SS11

11.3mm Screw Sleeve

Reusable Hose End Swivel Fitting

- Suits 8.6mm hose



LC-99-RHESWSS

1/8 NPT, Swivel & Screw Sleeve

LC-99-RHESO

1/8 NPT Stud Only

LC-99-RHESSS

Screw Sleeve Only

Swivel Union Fitting



LC-99-SU1/8M

6mm x 1/8 BSP

LC-99-SUM10

6mm x M 10x1

Banjo Fitting 90 Degree



LC-99-BF1/8

M10 x 1/8 BSP

LC-99-BFM10

M10 x 1/M10 x 1

Bulkhead Straight & 90 Degree Elbow Fitting

- Suits 6mm Tube



LC-99-BH6M

6mm x 25mm

LC-99-BHS6M

6mm x 6mm

LC-99-BHS6MSS

6mm x 6mm Stainless Steel

LC-99-BE906M

6mm Tube x 6mm 90°

LC-99-BE906MSS

6mm Tube x 6mm 90° Stainless Steel

Compression Olive Fitting

- Suits 8.6mm & 11.3mm hose
- Use with Compression Nut



LC-99-CO

6LL 6mm

LC-99-COSS

6LL 6mm Stainless Steel

LC-99-COL

6L 8mm

LC-99-COLSS

6L 8mm Stainless Steel

Compression Nut Fitting

- Suits 8.6mm & 11.3mm hose
- Use with Compression Olive



LC-99-CN

6LL 6mm

LC-99-CNSS

6LL 6mm Stainless Steel

LC-99-CNL

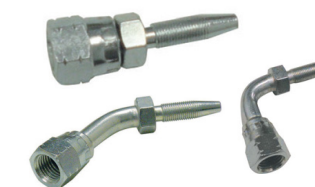
6L 8mm

LC-99-CNLSS

6L 8mm Stainless Steel

JIC 7/16 Reusable Hose Stud

- For 8.3mm Hose
- Stainless steel options available



LC-98-BT0544

Straight Fitting

LC-98-BT0555

45° Fitting

LC-98-BT0566

90° Fitting

LC-98-BT0544SS

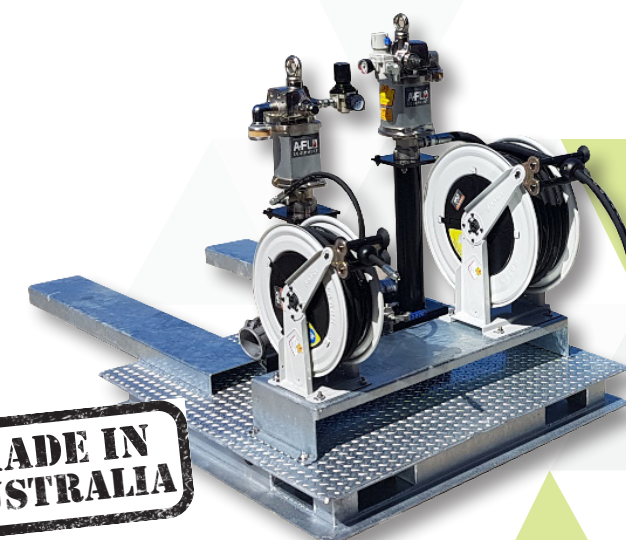
Straight Fitting Stainless Steel

LC-98-BT0566SS

90° Fitting Stainless Steel

Bulk Grease Transfer Systems

We understand flow rates and pressures, with understanding your site and performance requirements our team can put together a solution to help you move bulk grease with ease. Static or mobile, our in house engineering team can assist, from concept right through to installation.



MADE IN AUSTRALIA



ULTRAFLO Air Operated Pump Kit

Features & Benefits

- The most cost effective and dependable solution to easier greasing of plant and equipment
- The ULTRAFLO Kit is in for the long haul and will withstand all you throw at it and is sure to meet your budget
- 58:1 Ratio High Pressure Grease Pump
- Up to 1500 g/Min
- 2 Year warranty
- Ideal for busy workshops where greasing is undertaken regularly
- Kit includes: Pump, Drum Cover, Follower Plate, 4M Hose, Grease Gun & Z Swivel

Applications

- Transport
- Earthmoving
- Industrial
- Agricultural
- Mining

Part No.	Description
AE-KP7247PZ	ULTRAFLO 58:1 Ratio Grease Kit - 20Kg
AE-KP7294SCZ	ULTRAFLO 58:10 Ratio Grease Kit - 180Kg
AP-1303	Heavy Duty Hand Trolley - 20Kg
AP-1305	Heavy Duty Mobile Trolley - 180Kg
AP-4325	HD 20Kg Drum Dolly
AP-2325	HD 180Kg Drum Dolly



ULTRAFLO Heavy Duty Rotary Drum Pump

- Solid aluminium construction
- 3 piece steel suction pipe & 2" bung adapter
- Suitable for petrol, diesel & motor oils



AP-1321
ULTRAFLO HD 205L Rotary Barrel Pump

AP-1321H
ULTRAFLO HD 205L Rotary Barrel Pump Hose & Nozzle

ULTRAFLO High Flow Rotary Drum Pump

- Flow Rate: up to 100L/Min
- Solid aluminium construction
- Steel suction pipe & foot strainer
- Ideal for fast efficient transfer of diesel fuel, petrol or kerosene
- Also suitable for oils up to SAE30
- Complete with 2.4M of hose, metal nozzle & holster
- 2" bung adapter



AP-1320
ULTRAFLO High Flow Diesel Pump

AP-1320F
ULTRAFLO High Flow Diesel Pump with 1" Filter

PIUSI Explosion Proof Refuelling Kits

- Premium pump EX rated
- Flow rate 50L/Min
- Fuel fitted
- Meter
- 4M hose
- Auto nozzles



FP-375010
EX50 12V Pump Kit 4m Hose, Auto Nozzle & Meter

FP-376010
EX50 240V Pump Kit 4m Hose, Auto Nozzle & Meter

PIUSI Explosion Proof Refuelling Pumps

- Ex Rated transfer pump is suitable for transferring diesel or unleaded fuel
- Pumps are self priming & have an inbuilt bypass valve



FP-371000
EX50 12V Pump Only - 50 LPM Flow Rate

FP-373000
EX50 240v Pump Only - 50 LPM Flow Rate

FP-395010
EX140 240V Pump Only - 140 LPM Flow Rate

ULTRAFLO Refuelling Pumps

- Vane pump with motor
- Built-in by-pass valve
- Duty Cycle: 30min
- Flow Rate: up to 50L/Min
- Noise level below 70dB
- 12V or 24V DC operation



FP-342000
ULTRAFLO 12V Refuelling pump Only

FP-347000
ULTRAFLO 24V Refuelling Pump Only

ULTRAFLO Refuelling Pump Kits

- Vane pump with motor
- Built-in by-pass valve
- Duty cycle: 30min
- Flow rate: up to 50L/Min
- Noise level below 70dB
- 12V or 24V DC operation
- 2M cables with clips for battery connection
- 4M hose (diameter 3/4")
- Manual or automatic nozzles available



FP-22500C
ULTRAFLO 12V Refuelling Pump kit

FP-22600C
ULTRAFLO 24V Refuelling Pump kit

FP-22500C-A
ULTRAFLO 12V Refuelling Pump kit & Auto Nozzle

FP-22600C-A
ULTRAFLO 24V Refuelling Pump Kit & Auto Nozzle

RAASM Diaphragm Pumps

- Exceptional quality & performance
- Self-priming
- 10 year warranty
- Suitable for diesel, oils, coolant & waste oil



RA-3C1/16111NHH
RAASM 3/4" Series Aluminium Pump 70L/min

RA-3C1/26111NHH
RAASM 1" Series Aluminium Pump 170L/min

ULTRAFLO Diesel Transfer Pumps

- Self-priming rotary vane pump
- Built-in by-pass valve
- Built-in strainer
- Continuous duty cycle
- 1" BSP(f) inlet/outlet
- Flow Rate: 60-100L/Min
- Ideal for bulk diesel fuel transfer



E-210750
ULTRAFLO PA1 240V Diesel Transfer Pump 60 LPM

E-210760
ULTRAFLO PA2 240V Diesel Transfer Pump 80 LPM

E-210780
ULTRAFLO PA2 240V Diesel Transfer Pump 100 LPM

PIUSI High Flow Bi Pump & Refuelling Kit

- Self priming, rotary vane pump equipped with a by-pass valve
- Flanged 1" BSP (f) connectors
- Flow Rate: up to 80L/Min
- Renowned for its ability to consistently outlast any other pumps in its league



FP-36301A
PIUSI 12V Bi Pump Only - 80 LPM

FP-36303A
PIUSI 24V Bi Pump Only - 80 LPM

FP-363280K
PIUSI 12V Bi Pump Kit, 4m hose & Auto Nozzle

PIUSI Pit Stop Refuelling Kits

- Two 12v Diesel Pumps 45L/min
- Automatic hose reel
- 14m x 3/4" Hose
- Water Filter
- Automatic Diesel Nozzle
- Easy to install



FP-212000
Pitstop 45 12V Refuelling Kit

FP-213000
Pitstop 45 24V Refuelling Kit

PIUSI Diesel Transfer Pump

- Self-priming rotary vane pump
- Continuous duty
- Inbuilt bypass valve
- 1" inlet/outlet (70, 90 & 120L/min)
- 1 1/4" inlet & 1" outlet (140L/min)



FP-732000
PIUSI 240V Panther Transfer Pump Only 70 LPM

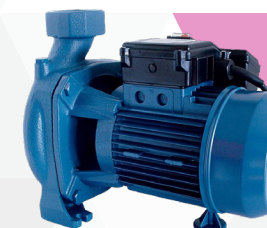
FP-73320A
PIUSI 240V Panther Transfer Pump Only 90 LPM

FP-326000A
PIUSI 240V Panther Transfer Pump Only 120 LPM

FP-395050
PIUSI 240V E140 Transfer Pump Only 140 LPM

GESPASA Diesel Pump

- Centrifugal pump
- Flow according to manometric height: from 100 to 500 l/min
- Motor 240v
- 2,800 rpm
- Continuous duty Cycle
- Thermal protector
- 2" BSP inlet/outlet



GE-02050
CG-150 240V High Flow Transfer Pump

ULTRAFLO Diesel Flow Meters

- Suitable for diesel fuel only
- 1" BSP (F) inlet and outlet ports
- Mechanical gear meter with $\pm 1.0\%$ accuracy
- Flow rate: 20-120L/min
- Max working pressure: 3.5Bar (50PSI)



- FP-553000**
ULTRAFLO K33 3 Digit 1" Flow Meter
- FP-563000**
ULTRAFLO K44 4 Digit 1" Flow Meter

PIUSI K24 Inline Digital Meters

- An economical, reliable and versatile solution for metering fluids
- Turbine type meter reinforced with polyamide body
- 1" BSP inlet/outlet connections
- Max. Flow Rate: up to 120L/Min
- Display can be rotated to 4 different positions
- Battery powered with 2 replaceable AAA batteries



- FP-408100**
K24 Inline Digital Flow Meter - 1"

PIUSI ATEX Mechanical & Digital Flow Meters

- Meets the ATEX requirements related to the use of materials in potentially explosive atmospheres.
- Resettable
- Flow rate: 20-120 L/Min
- Accuracy: +/- 0.3%



- FP-570030**
K33 ULP Mechanical 1" Flow Meter
- FP-408X00**
K24 ULP 1" Digital Flow Meter ATEX/IECEx

PIUSI Pulse Flow Meters

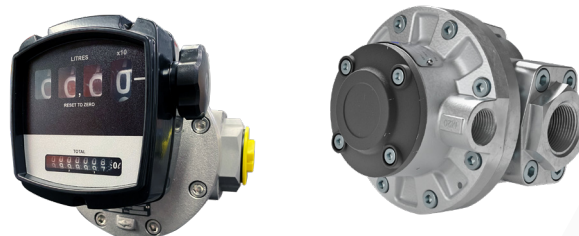
- Pulse flow meters for oil & diesel
- Flow Rate: Up to 100 LPM
- Accuracy: $\pm 0.5\%$
- Repeatability: 0.2%



- FP-472A20**
K600/3 Oil Only Meter - 3/4" - 6-60 LPM
- FP-472A00**
K600/3 Oil/Diesel Meter - 1" - 10-100 LPM
- FP-473000**
K600/4 Oil/Diesel Pulser 1-1/2" BSP - 15-150 LPM
- FP-1175200B**
Remote Display for K600/3

ULTRAFLO High Accuracy Industrial Meter

- Designed and manufactured for Australia conditions
- All metal rotors
- IP67 Mechanical display
- Options - LCD Displays & remote mount display
- 2 year warranty
- Intrinsically safe



- UF-25A-P**
ULTRAFLO 1" Aluminium Pulse Meter (10-150LPM)
- UF-25A-M**
ULTRAFLO 1" Aluminium Meter with 4 Digit Mechanical Register (10-150LPM)
- UF-40A-P**
ULTRAFLO 1 1/2" Aluminium Pulse Meter (15-250LPM)
- UF-40A-M**
ULTRAFLO 1 1/2" Aluminium Meter with 4 Digit Mechanical Register (15-250LPM)
- UF-50A-P**
ULTRAFLO 2" Aluminium Pulse Meter (30-450LPM)
- UF-50A-M**
ULTRAFLO 2" Aluminium Meter with 4 Digit Mechanical Register (30-450LPM)

RAASM 540 Series Diesel Hose Reels

- Can be roof, wall or bench mounted
- Equipped with 0.6m Connection Hose
- 1" BSP (f) inlet & 1" BSP (m) outlet
- Pressure rating: 10Bar



- RA-8540.601**
Diesel Hose Reel 15M x 3/4" ID Hose
- RA-8540.603**
Diesel Hose Reel 15M x 1" ID Hose
- RA-8540.610**
Diesel Hose Reel 10M x 1" ID Hose

FUELSHOT Standard Automatic Nozzles

- Automatically shuts off nozzle
- Flow Rate: up to 60LPM
- Includes 1" BSP(f) Swivel
- Not suitable for gravity feed applications



- FS-AL60**
FUELSHOT 3/4" Auto Diesel Nozzle - 60L/Min
- FS-UL60**
FUELSHOT 3/4" Auto Unleaded Nozzle - 60L/Min

High Flow Truck Stop Automatic Nozzles

- Automatic shut off diesel nozzle
- For high flow transfer of up to 120L/Min
- Suitable for pump applications only
- Complete with 1" BSP(f) Swivel
- Ideal for high flow mobile pumps, truck bus or fleet operations



- FS-AL120**
FUELSHOT 1" High Flow Truck Nozzle - 120L/Min
- HU-503038-04**
Husky 1" High Flow Truck Nozzle

FUELSHOT Manual Fuel Nozzles

- Flow Rates: up to 100L/Min
- Inlet 1" BSP(f) swivel
- Suitable for gravity feed systems
- Ideal for farm tank and smaller fuel dispensing applications



- FS-ML2**
FUELSHOT Manual Diesel Nozzle with black cover
- FS-MUL2**
FUELSHOT Manual Unleaded Nozzle with black cover

FUELSHOT Slimline Automatic Nozzles

- Automatically shuts off nozzle
- Flow Rate: up to 80L/Min
- Includes 1" BSP(f) Swivel
- Not suitable for gravity feed applications



- FS-AL80**
FUELSHOT 3/4" Slimline Diesel Nozzle - 80L/min
- FS-UL80**
FUELSHOT 3/4" Slimline Unleaded Nozzle - 80L/min

FUELSHOT Premium Automatic Nozzles

- Automatically shuts off nozzle
- Flow Rate:
3/4" 80L/Min
1" 140L/Min
- Includes 1" BSP(f) Swivel
- Not suitable for gravity feed applications



- EL-102-ZVA24.1**
3/4" Slimline Diesel Nozzle - 80 LPM
- EL-102-ZVA24.1**
3/4" Slimline Unleaded Nozzle - 80 LPM
- EL-102-ZVA25-41**
1" Hi Flow Diesel Nozzle heavy spring

FUELSHOT Fuel Nozzle Swivels

- Compact aluminium and brass construction
- Viton/Buna - N Seals



FS-SP20X20
3/4" BSP (m) x 3/4" BSP (f) Single Plane Swivel

FS-SP341
3/4" BSP (m) x 1" BSP (f) Single Plane Swivel

FS-SP25X25
1" BSP (m) x 1" BSP (f) Single Plane Swivel

FUELSHOT Dual Plane Swivel

- Provides a full 360 degree spherical rotation for free-movement facilitation flexibility to refuel vehicles from almost any direction
- Unique design to allow high flow rates



FS-DP34
3/4" BSP (m) x 3/4" BSP (f) Dual Plane Swivel

FS-DP11
1" BSP (m) x 1" BSP (f) Dual Plane Swivel

SAR-GEL Water Finding Paste

- Fast & reliable way to detect water in tanks containing diesel & ULP fuels
- The paste will turn pink when it comes into contact with water



SG-FT0001
Water Finding Paste - 28g

FUELSHOT Farm Tank Fuel Hose

- 25mm ID diesel, petrol & oil resistant hose
- Kink resistant
- Max. Working Pressure: 145PSI
- Includes anti-static copper wire for increased safety
- Excellent UV resistant & flexibility
- Suitable for drum pumps & overhead tanks
- 20M coil length
- Made in Australia



RI-25FTH20-ASW
FUELSHOT 25mm Farm Tank Hose -20M

Breakaway Coupling

- Compact & lightweight
- 1" (m) x 1" (f) multi-plane swivel joint
- Unique inline latching mechanism
- Re-Connectable



HU-5969140
Safe T Break 1" BSP (m) x 1" (f) BSP

FLOMAX Diesel Fuel Nozzles

- Flow rates up to 680L/min
- Includes 1 1/2" NPT (f) Swivel
- Highest flow rate capability
- Reducing refuelling time
- Dry break fitting
- Dependable ball locking mechanism
- Automatic shut off



FX-FNBL-P
Fuel Nozzle with Ball Lock with Swivel and Plug

FX-FRA-C
Fuel Receiver - Alum. With Cap

Spin Secure Lockable Filler Cap

- Does not require a padlock
- 2" BPT Female
- Rubber gasket numbered lock with over 50,000 combinations
- Complete with 3 keys
- Integrated safety thermal relief
- Male nipple adapter available (STC-750/754-200)



STC-FSS750MF
Spin Secure Lockable Filler Cap

STC-FSS754MF
Spin Secure Lockable Filler Cap with Built-in breather

STC-750/754-200
Spin Secure 2" Nipple Adapter

ULTRAFL0 100 240V Bowser

- Total refuelling solution in a box
- Built-in nozzle holster
- Automatic pump stop
- 240V Self Priming Vane Pump
- Flow rates 100L/Min
- 4M x 1" Delivery Hose
- Automatic Nozzle
- 4 Digit Meter
- Pedestal available



E-AF3000
ULTRAFL0 100 240V Bowser without Pedestal 100LPM

HOSEBUN Hose Hangers & High Hose Mast

- Patented urethane hose saddle designed to properly suspend hoses
- Suspend hoses in a permanent, temporary or semi rigid position
- Used in various industrial, commercial sites and applications



H-HB100ED
Hosebun with Metal D-Ring, Holds up to 1" Hose

H-HB125ED
Hosebun with Metal D-Ring, Holds up to 1 1/4" Hose

H-HB150ED
Hosebun with Metal D-Ring, Holds up to 1 1/2" Hose

LV-HM152
4 Meter Hose Mast with Base, Pulley and Hosebun

Diesel Tank Bottom Fill Kit

- Designed and configured for easy installation to horizontal or tripod tanks where fill points are within 200mm from tank edge and the overall maximum height is 3200mm (3.2M)
- Standard Kits are fitted with a Sight Tube, All Fittings, Valves, Camlocks & Gal Pipe Fill Point with stand alone Vent



AF-BFK-32
1 1/4" Bottom Fill Kit with Sight Tube

AF-BFK-38
1 1/2" Bottom Fill Kit with Sight Tube

AF-BFK-50
2" Bottom Fill Kit with Sight Tube

PIUSI Cube 240V Diesel Bowser

- Total refuelling solution in a box
- Built-in nozzle holster
- Automatic pump stop
- 240V Self Priming Vane Pump
- Flow rates 70L/Min or 90L/Min
- 4M x 1" Delivery Hose
- Automatic Nozzle
- 4 Digit Meter
- Pedestal available



FP-59100A
PIUSI Cube 70 240V Diesel Bowser 70LPM

FP-592000
PIUSI Cube 90 240V Diesel Bowser 90LPM

PIUSI Diesel Fuel Management Bowser

- Up to 50 users
- Flow Rate: 12v 56L/Min, 240V 70L/Min
- Memory 255 transactions
- Accuracy: +/- 0.5%
- Continuous operation
- IP55 protection
- Pedestal available
- Software required



FP-59400C
Cube 70MC 240V Diesel Bowser 70L/min (50 users)

FP-59413A
Cube 70MC 12V Diesel Bowser 56L/min (50 users)

FP-F14144040
Kit Including Software 10 User Keys, 1 Management Key and USB Adaptor

FP-F15904000
Yellow User Keys (10 Per Pack)

MCBOX Standard Fuel Management System

- Single pump only
- Up to 80 users
- Quick and easily download transactions
- Easy to install
- Requires pulse input
- Memory 255 transactions
- 240V Power
- Software required with MCBOX (FP-F14144040)



FP-F1398000C
MCBOC 240V 80 Users

FP-F14144040
Kit Including Software 10 User Keys,
1 Management Key and USB Adaptor

FP-F15904000
Yellow User Keys (10 Per Pack)

Honda Diesel Transfer Pump

- Petrol powered
- 1.1 HP recoil start
- 4 stroke, mounting bracket & carry handle
- Max Head: 36M
- Max. Flow Rate: 130L/Min
- Weight: 5.5Kg



UF-AP/GX25
1" Honda Diesel Transfer Pump

ULTRAFLO Bulk fuel Storage Tank Filtration Kit

- The kit sets you up to protect your assets by ensuring every drop is filtered and your tank is protected from any moisture or condensation.
- Simple to maintain and service
- Ideal for static above ground, overhead or mobile tanks
- Removes 99.5% of contamination 10 Micron or larger
- Water absorption capacity - 1 filter holds up to two cans of water



DF-P902973
Bulk Fuel Filter Kit, TRAP Breather and Fittings

POLYCUBE Poly Diesel Tanks

- Premium 12V 35L/Min Pump, Battery Cable & Clips, 4M x 3/4" Diesel Delivery Hose & Auto Nozzle
- Built-in splash proof breather & lockable lid
- Ideal for back of utes or truck to improve efficiency in refuelling your equipment



FC-200LFA
200L Slimline POLYCUBE with Premium Kit

FC-400LFA
400L Stumpy POLYCUBE with Premium Kit

FC-440LFA
440L Slimline POLYCUBE with Premium Kit

ULTRAFLO 2.5HP Petrol Driven Diesel Pump

- 1" & 1.5" diesel pump available
- 2.5HP 4 stroke petrol engine
- Recoil start system
- Flow rate: up to 180L/Min
- Weight: 1" 15kg, 1.5" 20Kg



UF-29PE1DV
2.5HP Petrol Driven 1" Diesel Pump Viton Seals

UF-29PE1SDV
2.5HP Petrol Driven 1.5" Diesel Pump Viton Seals

ULTRAFLO 4HP Diesel Driven 2" Diesel Pump

- 4HP stroke petrol engine
- Recoil start system
- Flow rate: 330L/Min
- Weight: 70Kg
- Non self priming
- 2" Inlet / Outlet



UF-4DE2DV
4HP Diesel Driven 2" Cast Iron Diesel Pump Viton Seals (Non Self Priming)

OCIO Level Indicator

- Continuous metering
- Indication in height, volume and filling percentage
- Maximum and minimum level alarms
- High accuracy
- Intuitive software managing procedure
- Easy installation
- PC linkup option



FP-75510D
OCIO Level Indicator LV/RS Output - Diesel

A-FLO High Level Alarm

- Suitable for steel or plastic tanks
- Suitable for diesel, oil & water
- High power alarm sounder 97dB at 1M
- Flashing light on top of unit
- Mute button stops the sounder & light still flashes
- Float switch supplied with 5M cable
- 2 year battery life, if tested weekly with no alarms



HFE-HLA001
A-FLO High Level Diesel/Oil Alarm - Steel Tanks

ULTRAFLO 6.5HP Petrol Driven 2" Diesel Pump

- 6.5HP 4 stroke petrol engine
- Recoil start system
- Flow rate: 330L/Min
- Weight: 28Kg
- Non self priming
- 2" Inlet / Outlet



UF-65PE2DV
6HP Diesel Driven 2" Cast Iron Diesel Pump Viton Seals (Non Self Priming)

ULTRAFLO Farm Tank Filtration

- Economic fuel filters for use in gravity, hand, air or electrical pump applications
- Includes a 10 micron fuel filter, drain valve & replaceable bowl
- Rust & weather resistant
- 1" BSP inlet & outlet
- Max. Working Pressure: 10 Bar/150PSI
- Suitable for Diesel & Unleaded fuel



UF-FF25-1
ULTRAFLO 1" Fuel Filter

UF-FFE-10M
ULTRAFLO 10 Micron Filter Element Only

ULTRABLUE Nitrile Fuel Glove

- Jersey liner / Safety cuff offers extra protection
- Superior puncture, snag and abrasion resistance
- Resistant to oil, chemical and greases
- Sanitised anti-bacterial treated



MX-AUB98XL
Safety Cuff Blue Nitrile - 3/4" Dipped

MX-AUB131XL
Safety Cuff Blue Nitrile - Fully Dipped

Multi-Tanks Self Bunded Oil / Diesel Tanks

- Self bunded, low cost, slimline, zinc coated tank with polypropylene inner tank
- Level indicator & leak detector device
- Breather, filler & decals
- Forkliftable



EM-7381MT
750L Multi Tank (980L x 770W x 1460H)

EM-7382MT
1000L Multi Tank (1280L x 800W x 1460H)

EM-7539MT
1500L Multi Tank (1630 x 770W x 1870H)



Piusi Fuel Management Bowser

The PIUSI Diesel Fuel Management Bowsers are a perfect solution for dispensing and tracking usage of diesel in non-commercial applications.

It has a sturdy design for different applications eg.fixed to walls, tanks, forecourts or trailers. Truly an all-in-one solution with a self-priming pump fitted with bypass, hose, nozzle & FMS System built-in.



Features & Benefits	
<ul style="list-style-type: none">• Flow Rate: up to 70L/Min• Accuracy: +/- 0.5%• Up to 120 users• Continuous AC operation• IP55 protection	
Part No.	Description
FP-59413A	Cube 70MC 12V Diesel Bowser 56L/Min (50 users)
FP-59400C	Cube 70MC 240V Diesel Bowser 70L/Min (50 users)
FP-59415B	Cube 70MC 240V Diesel Bowser 70L/Min (120 users)
FP-F14144040	Kit including Software, 10 user keys, 1 management key & USB adapter
FP-127080B	Pedestal FP-127080B
FP-74200B	Self Service FM100 Diesel Bowser 90L/Min
FP-F15904000	User keys kit - 10 keys



BLUEQUIP Rotary Drum Pump Kit

- Heavy duty polypropylene construction
- 2M of delivery hose & stainless steel spout
- Complete with BLUEQUIP adapter to suit 205L drums
- Ideal for smaller 1-2 vehicle operations



FP-332080
Rotary Action Barrel Pump Kit German & US Adaptor

BLUEQUIP Gravity Feed Kit

- Ideal for IBC applications where no electricity or air is available
- 4M of BLUEQUIP delivery hose
- Manual nozzle with swivel
- IBC Adapter Kit to suit standard IBC's



FP-155170
IBC Gravity Feed Kit

BLUEQUIP Air Operated IBC Pump Kit

- Most cost effective pump system available for IBC's
- Reliable 2:1 Ratio Pump 40L/Min
- 4M of BLUEQUIP Delivery Hose
- Pump Mount Bracket comes with bottom IBC Suction Kit
- Automatic Nozzle (standard)



AE-KP21A
BLUEQUIP IBC Kit, Auto Nozzle

AE-KP21M
BLUEQUIP IBC Kit, Manual Nozzle

Graco Husky Diaphragm Pump

- Polypropylene body construction
- 1/4" Inlet/outlet connections
- Flow rates up to 57L/min
- Ideal for transfer of AdBlue from one tank to another



G-D5A277
Graco Husky 515 Plastic Pump

EZI-Action Drum Pumps

- Output per stroke 20L 160ml
- Output per stroke 205L & 1000L 400ml
- Delivers on the up and down stroke
- Superior chemical resistance and anti-corrosion technology
- The only serviceable hand pump in the world, which acts to extend its lifespan



EZ-25/5
25L Drum Pump

EZ-205/55B
205L AdBlue Drum Pump

EZ-1000/220
Ezi-Action 1000L IBC Drum Pump with 4 Adaptors

BLUEQUIP 240V Electric Transfer Pump Only

- Flow Rate: up to 35L/Min
- 2M cable
- Reliable Self-Priming Pump
- 3/4" Inlet/Outlet hose tails included



FP-203010
240V Electric Transfer Pump

RAASM Diaphragm Pump

- Polypropylene body construction
- 1/2" Fluid inlet, 3/4" fluid outlet
- Flow rate up to 60LPM
- 10 year warranty



RA-2B3-16117EA6
RAASM 1/2" Diaphragm Pump EPDM Membrane

BLUEQUIP 240V Submersible Pumps

- Flow Rate: up to 40L/Min
- 5M cable
- Reliable Self-Priming Pump
- Multi Stage sub pump ideal for high pressure requirements or applications where pumping to multiple hoses / dispensers



PPA-KP350-A-1
240V SS Submersible Pump only

PPA-U5S-3CS4-A1
240V SS Multistage Submersible Pump

BLUEQUIP 12V Electric Pump

- 12V Self Priming Pump
- Flow Rate: 35L/Min
- 205L Drum or 1000L IBC Suction Kits available
- Optional kits include: 6M x 3/4" BLUEQUIP Hose & Manual Nozzle with Swivel



FP-204000
BLUEQUIP 12V Transfer Pump

BLUEQUIP Pro 240V Pump Kit

- The most common and sought after system in the market
- Stainless Steel IBC bracket with nozzle holder
- Self priming 35L/Min pump
- Digital flow meter
- 6M x 3/4" ID hose & automatic shut off nozzle
- Bottom suction kit



FP-101320
240V 1000L IBC Kit with Auto Nozzle & Meter

PIUSI Mobile Refilling Kit

- Specially designed for refilling AdBlue systems on diesel cars
- Comes with a universal connector to fit all car models
- The filling process is automatic & has an adjustable flow rate of 3-11 LPM



FP-10020A
PIUSI Delphin Pro 240v Mobile Refilling Unit

BLUEQUIP Manual Nozzle

- Easy to use Polypropylene construction Gun
- 3/4" BSP(f) swivel inlet
- Flow Rate: up to 90L/Min
- Suitable for gravity feed applications



AE-PPM90ADB
BLUEQUIP Manual Dispense Gun

BLUEQUIP Auto Nozzles

- Reliable, light, easy to handle & ergonomic
- Liquid compatible with AdBlue/DEF
- Inlet 1" BSP (m)
- Magnetic version



FP-A10SS
BLUEQUIP Genius Auto Nozzle (Suitable for Nozzle Holsters)

BLUEQUIP Standard Stainless Steel Auto Nozzle

- Automatic AdBlue Nozzle
- Maximum flow rate: 60ltr Per Min
- Suitable for urea and water
- Stainless steel body & spout with a plastic guard
- 3 position stay open latch
- Supplied with 3/4" hose barb swivel



AE-PAX70ADB
SS Automatic Shut-off Nozzle

AE-PAX70ADBM
SS Automatic Shut-off Nozzle with Magnet

BLUEQUIP K24 Inline Digital Flow Meter

- Flow rate: 6-120L/Min
- Face can be rotated 4 ways
- 1" M BSP Inlet/ Outlet c/w socket
- LCD electronic display
- Accuracy +/-1% after calibration



FP-407010A
K24 Inline AdBlue Digital Flow Meter - 1"

BLUEQUIP Delivery Hose & Check Valve

- Great flexibility and kink resistance, even at low temperatures
- Outstanding chemical resistance
- Max. Working Pressure: 290PSI
- 1" inlet/outlet
- One way check valve



FP-BQ20X1
BLUEQUIP 20mm Hose

FP-157490
Inline Check Valve Only

BLUEQUIP 1000L IBC Cover

- IBC Cover ideal to protect and reduce impact of direct sunlight on AdBlue IBC's
- Easy to install & remove when required
- 240V Electric Pump Kit can be still mounted on side of IBC



AE-IBCCOVER
1000L IBC Cover

BLUEQUIP Spring Retractable Hose Reels

- Increase operation efficiency, keep hoses maintained and work area clean
- Robust construction
- Fluid path compatible with AdBlue® fluid
- Heavy duty dual pedestal base



AE-VGL1910ADB
Hose Reel 10M x 3/4" ID Hose

AE-VGL1915ADB
Hose Reel 15M x 3/4" ID Hose

RAASM 436 Series Hose Reel

- Painted steel reel
- 10 bar
- 304 stainless steel swivel
- 1" inlet 3/4" outlet



RA-8436.251
RAASM 436 Series AdBlue Reel - 10m x 3/4" Hose

RA-8436.252
RAASM 436 Series AdBlue Reel - 15m x 3/4" Hose

POLYCUBE AdBlue Ute Tanks

- Complete with a Premium 12V 35L/Min Pump with Battery Cable & Clips, 4M x 3/4" Delivery Hose & Manual Nozzle
- Optional: Flow Meter
- Ideal for back of utes or truck to improve efficiency in refueling your equipment
- Increased thickness of wall makes these POLYCUBE's strong & increases the life span
- Built-in splash proof breather & lockable lid



FC-100LAB
100L Slimline AdBlue POLYCUBE

FC-200LAB
200L Slimline AdBlue POLYCUBE

BLUEQUIP AdBlue High Level Alarm

- Suitable for steel or plastic tanks
- Suitable with AdBlue
- Battery operated (battery supplied, type PP3 x1)
- Weatherproof to IP65
- Compact design for use in confined spaces
- High power alarm sounder 97dB at 1M



HFE-HLA002
AdBlue High Level Alarm C/w Sensor & 5M Cable

Dry Disconnect Bulk Delivery Fittings

- 316L stainless steel
- 2" BSP
- Tank unit male
- Hose unit female
- Dry break fitting



LV-CH070-SEY01D
2" BSP Drybreak Hose Unit SS/Viton (Female)

LV-CT070-SEZ01
2" BSP Drybreak Tank Unit SS/Viton (Male)

OCIO Level Indicator

- Continuous monitoring
- Indication in height, volume and filling percentage
- Maximum and minimum level alarms
- High accuracy
- Intuitive software managing procedure
- Easy installation
- PC linkup option



FP-755140
OCIO Level Indicator LV/RS Output - AdBlue

LOXEAL Thread Sealant

- High strength, fast curing anaerobic adhesive for locking & sealing fitted parts
- High viscosity & thixotropic effect allows larger tolerances
- Highly resistant to heat, corrosion, vibrations, water, gases, oils, hydrocarbons & many chemicals
- Must use activator with 85-86



LX85-86 250
Loxal 85-86 Thread Locking 250ml AdBlue

LXAC11 200
Loxal Activator 11

Industrial Grade Mini Sprayers

- Viton / EPDM Seals
- Heavy duty head and pump
- Automatic safety pressure valve
- Max pressure 1L (44Psi) and 1.5L (58Psi)
- Adjustable nozzles 0.8mm
- Ideal for solvent, brake and parts cleaner, tyre shine and degreaser



AP-3132PK
1L Hand Held Sprayer Bottle

AP-3135PK
1.5L Hand Held Sprayer Bottle

ULTRAFLO Multi-Purpose Pumps

- Flow Rate: up to 20L/Min
- Available in Ryton or Polypropylene construction
- Ryton & Stainless Steel provide excellent chemical compatibility with lacquers, low viscosity chemicals & mild acids
- Polypropylene, Teflon & Stainless Steel offer excellent chemical resistance to herbicides, pesticides chemicals & mild detergents



AP-P490
ULTRAFLO Level Action Polypropylene Pump

AP-RP90P
ULTRAFLO Polypro Rotary Drum Pump - Yellow

ULTRAFLO Water Control Valve

- A light weight Control Valve with rigid outlet
- An ideal Hose Reel Water Gun for workshop applications
- The ultimate choice for car and truck dealerships
- Manufactured in Europe



AN-26/CR
ULTRAFLO Water Valve with 3/8" Connection

AN-27/CR
ULTRAFLO Water Valve with 1/2" Connection

FUELSHOT Slump Gun

- For use with concrete trucks or any other applications where high pressure water wash down is needed
- Robust, case hardened steel for extra strength needed in rugged applications



SG-1189
FUELSHOT Slump Gun

ULTRAFLO Heavy Duty Hot & Cold Wash Trigger Gun

- Spray pattern and water flow is easily controlled by the trigger action
- Suitable for flow rates up to 25L/Min
- Suitable for hot water up to 95°C
- Ideal for all types of commercial and industrial applications including restaurants, butchers, supermarkets, abattoirs, hotels etc



P-81004
ULTRAFLO Dinger Water Gun

ULTRAFLO Plastic Enclosed Air/Water Reel

- Manufactured in Europe
- Lightweight but robust enclosed casing
- Impact resistant, quality and high performance spring with longevity in mind
- Premium Hose with flexibility for great user experience



AM-8610
Plastic Enclosed Air/Water Reel - 15m x 3/8"

AM-8612
Plastic Enclosed Air/Water Reel - 15m x 1/2"

RAASM 430 Series Air/Water Hose Reels

- Roof, wall or bench mounted
- 0.6m Connection Hose
- 1/2" inlet (f) & outlet (m)
- 20 Bar swivel



- RA-8430.103**
RAASM 430 Air Water Reel 10M x 1/2" ID Hose
- RA-8430.104**
RAASM 430 Air Water Reel 15M x 1/2" ID Hose

RAASM 540 Series Air/Water Hose Reels

- Roof, wall or bench mounted
- 0.6m Connection Hose
- 3/4" inlet (f) & outlet (m)
- 20 Bar swivel



- RA-8540.101**
RAASM 540 Air Water Reel 10M x 3/4" ID Hose
- RA-8540.102**
RAASM 540 Air Water Reel 15M x 3/4" ID Hose

RAASM 430 Series Stainless Steel Hose Reels

- Roof, wall or bench mounted
- Ideal for water wash down
- 1/2" inlet (f) & 3/8" outlet (f)
- 200 bar swivel
- Max. Water Temperature: 130°C
- Ideal for food industries
- Capacity: 15M x 1/2" or 18M x 3/8" Hose



- RA-8434.300**
RAASM SS 430 Bare Reel
(15M x 1/2" or 18M x 3/8" ID Hose Capacity)
- RA-8424.300**
RAASM SS 430 Bare Reel - Swivel Bracket
(15M x 1/2" or 18M x 3/8" ID Hose Capacity)

RAASM 540 & 560 High Capacity Stainless Steel Reels

- Roof, wall or bench mounted
- Ideal for water wash down
- 1" inlet/outlet (f)
- Ideal for food industries
- Capacity: 540 Series 15M x 1" or 20M x 3/4" Hose
- Capacity: 560 Series 20M x 1" or 30M x 3/4" Hose



- RA-8542.100**
RAASM 540 Bare Reel - Brass Swivel Joint - 20Bar
- RA-8544.200**
RAASM 540 Bare Reel - Brass Swivel Joint - 100Bar
- RA-8564.200**
RAASM 560 Bare Reel - Brass Swivel Joint - SS Swivel Joint - 100Bar

RAASM 530 Series Stainless Steel Manual Air Water Bare Reel

- Wall or bench mounted
- Cap: 25m x 1/2" hose
- Pressure Rating: 20Bar
- 1/2" inlet & outlet (f)
- Suitable for air & water
- Brass swivel joint
- Ideal for workshop installation



- RA-75320.100**
RAASM 530 Series SS Manual Air/Water Bare Reel without Hose
- RA-753401**
RAASM 530 Series SS Manual Reel Hose Guide including Holding Arm

ULTRAFLO High Pressure Hot Wash Hose Reels

- Ideal for pressure wash applications where high pressure rating are critical
- Suitable for hot water up to 150°C max
- 440Bar / 5600PSI pressure rating
- Stainless Steel Reels are made of SS Type AISI 304



- AE-VL4H3820ST**
VL Series HP Reel - Bare
(20m x 3/8" ID Hose Capacity)
- AE-VX4H3815ST**
VX Series Stainless Steel HP Reel - Bare
(15m x 3/8" ID Hose Capacity)

RAASM 430 Series Manual Oil Bare Reel

- Wall or bench mounted
- Cap: 15m x 1/2" hose
- Pressure Rating: 150Bar
- 1/2" inlet & outlet (f)
- Ideal for workshop installation



- RA-74300.400**
RAASM 430 Series Manual Oil Bare Reel without Hose Guide
- RA-743001**
RAASM 430 Series Manual Reel Hose Guide including Holding Arms
- RA-74301.400**
RAASM 430 Series Manual Oil Bare Reel with Hose Guide

RAASM 540 Series Manual Air Water Bare Reel

- Wall or bench mounted
- Cap: 15m x 1" hose
- Pressure Rating: 20Bar
- 1" inlet & outlet (f)
- Suitable for air, water & diesel
- Brass swivel joint
- Ideal for workshop installation



- RA-75400.100**
RAASM 540 Series Manual Air/Water Bare Reel without Hose Guide
- RA-754001**
RAASM 540 Series Manual Reel Hose Guide including Holding Arm
- RA-75401-100**
RAASM 540 Series Manual Air/Water Bare Reel with Hose Guide

RAASM 530 Series Manual Air Water Bare Reel

- Wall or bench mounted
- Cap: 25m x 1/2" hose
- Pressure Rating: 20Bar
- 1/2" inlet & outlet (f)
- Suitable for air & water
- Brass swivel joint
- Ideal for workshop installation



- RA-75300.100**
RAASM 530 Series Air/Water Bare Reel without Hose Guide
- AF-RA-753001**
RAASM 530 Series Manual Reel Hose Guide including Holding Arm
- RA-75301.100**
RAASM 530 Series Manual Air/Water Bare Reel with Hose Guide

RAASM 560 Series Manual Air Water Bare Reel

- Wall or bench mounted
- Cap: 30m x 1" hose
- Pressure Rating: 20Bar
- 1" inlet & outlet (f)
- Suitable for air, water & diesel
- Brass swivel joint
- Ideal for workshop installation



- RA-75600.100**
RAASM 560 Series Manual Air/Water Bare Reel without Hose Guide
- RA-756001**
RAASM 560 Series Manual Reel Hose Guide including Holding Arms
- RA-75601.100**
RAASM 560 Series Manual Air/Water Bare Reel - Hose Guide

RAASM 240V Electric Cable Reel

- 10 amp 240v x 15m x 34 x 1.5mm Cable
- Inlet cable 1.3m x 34 x 1.5mm
- Working temperature: -5°C to +40°C
- Fitted with thermal protector
- IP44 Rated
- Can be used indoors and outdoors (under cover only)
- RCM Electrical Approval incl. A1
- AS/NZS 3105:2014
- Unreeled: 2300w (10 amp)
- Coiled: 1200w (5 amp)
- Comes fitted with swivelling bracket



- RA-2315SFA**
RAASM 240V Electric Cable Reel 10 amp 240v x 15m

ULTRAFLO High Visibility Barrier Reels

- Ideal for all workplace safety applications where a strong flexible warning barrier is required to corner off large open areas and provide highly visible safety awareness
- Economical, compact, impact resistant & light weight
- Supplied with Polypropylene Mounting Bracket



- P-BRYB15**
ULTRAFLO Barrier Reel, 15M Yellow & Black Webbing
- P-BRY15Y**
ULTRAFLO Barrier Reel, 15M Yellow Webbing



ULTRAFLO Economy Hand Trolley

- Enables easy and convenient means moving 20L to 60L drums around a workshop
- Includes two rubber wheels & a drum locking device



AP-1300
20L Hand Drum Trolley

ULTRAFLO Heavy Duty Hand Trolley

- Sturdy drum trolley suitable for both oil & grease drum 20L to 60L
- Complete with chain for holding drum in place



AP-1303
Heavy Duty Hand Trolley 18-60kg - 60kg Drums

ULTRAFLO Heavy Duty 205L Oil Drum Trolley

- 3 Wheel low level drum trolley
- Suitable for both oil and grease drums (205L or 180kg)
- Solid rubber tyres with rear swivel and locking brake
- Chain to secure drum
- Pump or hose reel can be fitted using optional brackets



AP-1305
HD 3 Wheel Drum Trolley 180kg - 205L Drums

ULTRAFLO Drum Dollies

- Provides effective means of moving drums throughout the workshop
- Industrial quality steel construction with heavy duty casters
- Gives increased mobility and reduces physical effort and drum handling
- OHS friendly



AP-4325
HD 20L - 20kg Drum Dolly

AP-3325
HD 60L - 60kg Drum Dolly

AP-2325
HD 205L - 180kg Drum Dolly

ULTRAFLO 205L Drum Spill Pallet

- Designed for temporary or secondary storage and to improve workplace safety, housekeeping & protection of the environment
- Economical & light-weight but tough & durable
- Convenient as easy forklift access points ensures portability



SC-PSP2
ULTRAFLO Eco Poly 2 Drum Spill Pallet

SC-PSP4
ULTRAFLO Eco Poly 4 Drum Spill Pallet

ULTRAFLO 1000L IBC Bunded Pallet

- Cost effective and space saving solution without compromising quality
- Bund capacity: 1300L
- Becoming mandatory to meet workplace standards for storage of IBC's



SC-IBCSP1
ULTRAFLO Eco Poly Single IBC Bunded Pallet

SC-IBCSP2
ULTRAFLO Eco Poly Dual IBC Bunded Pallet

LOXEAL Liquid Adhesive

- Anaerobic adhesive, fast curing, medium strength thread sealant for metal joints
- Replaces PTFE tape & yarn
- Provides instant sealing against low pressure or against high pressure within 1 hour
- Seals against gas, air, water, LPG, hydrocarbons, oils & many chemicals including refrigerants



LX58-10 100
Loxreal 58-10 Thread Sealing 100ml

ULTRAFLO Drum Wrench

- Bronze alloy drum wrench
- Designed to fit into most 2" & 3/4" drum plugs
- Wrench is hardened and tempered for increased strength
- Compact design for easy storage



AP-2315
ULTRAFLO Drum Wrench

205L-180kg Drum Cradle

- For ease of moving, safe storage and efficient decanting of 205L drums
- Ideal for workshops and other industrial environments
- HD construction with maximum capacity of 495Kg
- Lifting handle also included



AP-7425-2
HD 205L-180kg Drum Cradle

Oil & Fuel Spill Kits

- 40L Kits are in a compact hi-vis bag, small enough to store in truck cabins, toolboxes, behind a door or in laboratory cupboards
- 120L & 240L Bins are the best available in terms of capacity and fast response
- Refill kits available



SC-40LOSK
40 Litre Oil & Fuel Spill Kit

SC-120B-OFSK
120 Litre Budget Oil & Fuel Spill Kit

SC-240B-OFSK
240 Litre Budget Oil & Fuel Spill Kit

Oil and Fuel Pads

- Perforated along the centre allowing them to be easily divided so you can get the right size pad for the spill and assist in placing in smaller and confined spaces.
- 200GSM (Pack of 200)
- 300GSM (Pack of 100)
- 410 x 460mm



SC-60020P
200GSM Oil & Fuel Pads

SC-50020P
300GSM Oil & Fuel Pads

Z-Sorb Industrial Oil Absorbent

- Is an all-natural, environmentally friendly product with no free crystalline silica
- Absorbs most liquids including acids, alkalis, oils, chemicals & petroleum products. Also absorbs vapours & fumes
- Can be used as a sweeping compound, removing traces of oil and chemicals on concrete and asphalt.
- Absorbs Approx. 22L
- Approx. weight 15kg



ZS-22
Z-Sorb 22L Industrial Oil Absorbent Pack - 15kg



ULTRAFLO 1000L IBC Spill Containment Pallets

Features & Benefits

- Cost effective and space saving solution without compromising quality
- Bund capacity: 1300L
- Becoming mandatory to meet workplace standards for storage of IBC's
- Single IBC Spill Pallet dimensions: 1750mm(W) x 1650mm(D) x 875mm(H), 138kg (weight)
- Dual IBC Spill Pallet dimensions: 2550mm(W) x 1350mm(D) x 610mm(H), 175kg(weight)
- Complies with Australia Standard A53780

Part No.

Description

SC-IBCSP1	ULTRAFLO Poly Single IBC Spill Pallet
SC-IBCSP2	ULTRAFLO Poly Dual IBC Spill Pallet

HEAD OFFICE

T +61 3 9281 6200

F +61 3 9281 6250

E sales@aflo.com.au

W www.aflo.com.au

DISTRIBUTED BY:

MAKING EVERY DROP COUNT

