

# MF 300 Xtra

50 - 85 HP | 2WD & 4WD



**SIMPLE YET  
POWERFUL MACHINERY**



BORN TO **FARM**



# MF 300 Xtra

## Total Support for you and your farm

Rugged and compact, this simple yet powerful range of tractors with high-performance engines, comprises six models from 50hp to 85hp, which are ideal for farmers looking for a manoeuvrable, multi-tasking dependable machine.

Affordable and economical to run, these 'do anything' tractors are equally adept at cultivation, planting, transport or yard duties, working across a wide range of farm sectors including arable, livestock and horticulture.





# Engine

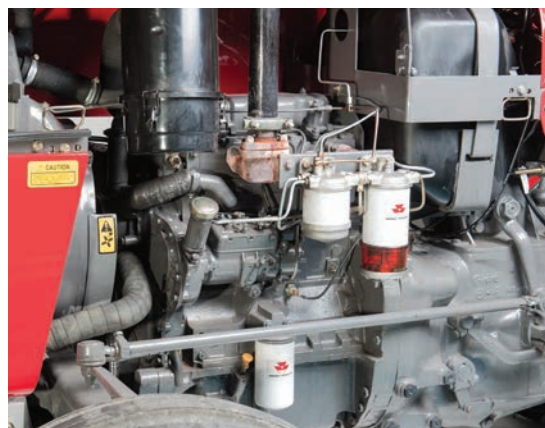
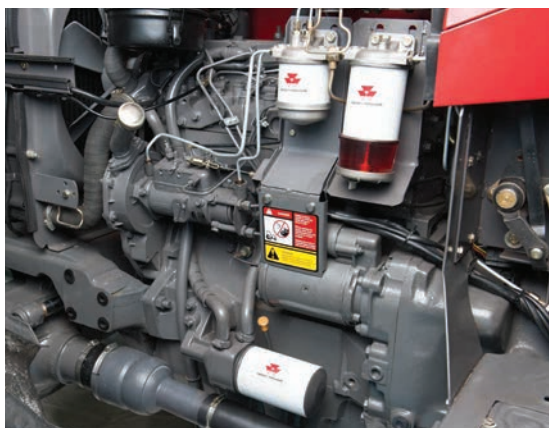
## Reliability and performance

These powerful and reliable machines are fitted with a powerful engine from Millat Tractors Limited. These engines are industry renowned for their durability, power and torque characteristics and low fuel consumption.

They feature:

- A rotary pump for straightforward reliable performance.
- Dual fuel filter for maximum filtration before the fuel reaches the engine.
- Canister oil filter for simple maintenance.
- Easy access air filter for enhanced engine protection.
- Easy access to daily check and service points encourages maintenance, prolonging the engine's life

	MF 345 Xta	MF 350 Xtra	MF 355 Xtra	MF 360 Xtra	MF 375 Xtra	MF 385 Xtra
Max power HP/kW @2250 rpm	50 (37)	50 (37)	60 (45)	60 (45)	75 (56)	85 (63)
Max Torque (Nm) @1400 rpm	172	172	212	212	290	300
Engine Type	2.5L, 3Cyl	2.5L, 3Cyl	2.5L, 3Cyl	2.5L, 3Cyl	4.1L, 4Cyl	4.1L, 4Cyl





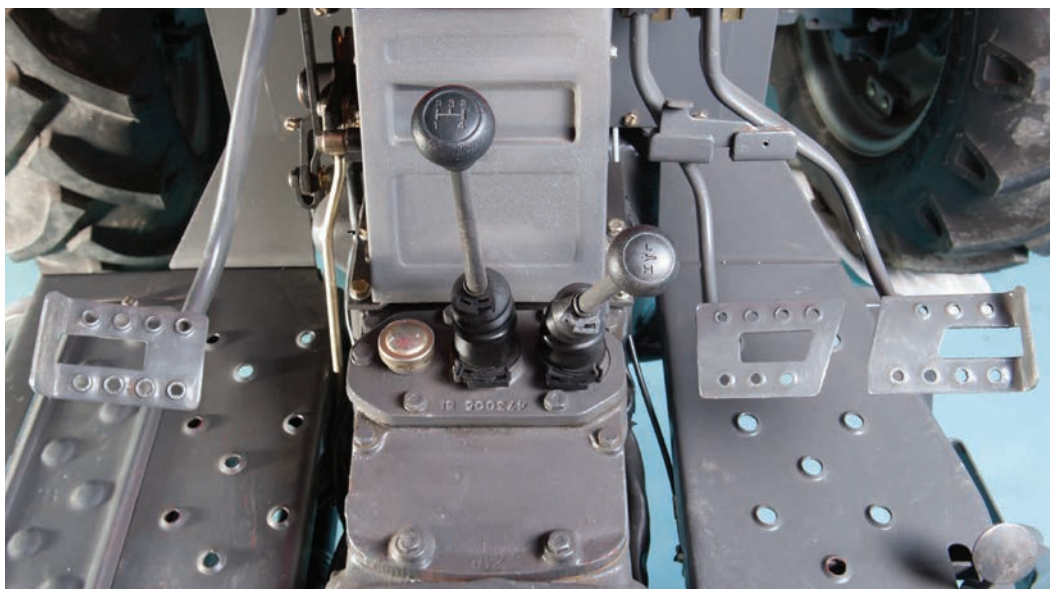
# Transmission

## Simple and Efficient

The **MF 300 Xtra** series comes with a 8-forward and 2-reverse sliding mesh gearbox with a 10" x 12" dual clutch. It provides 4 well-spaced gears in 2 ranges, giving ample speed options for a variety of tasks, easily selected by the centre shift transmission controls. The gear layout and selection sequence has been designed to enhance the ability to select the required gear easily. This encourages changes to be made enhancing fuel economy and productivity.

Four gears fall within the typical field working range of 4 km/h to 12 km/h, whilst the nominal maximum transport speed is 30kmh.

All MF 300 Xtra Series tractors are specified with a heavy duty spring centre mechanical dual clutch and live PTO. This configuration allows the transmission drive to be disengaged whilst the PTO continues to be driven, facilitating gear changes while powering the implement.







## Rear Axle

### Heavy duty and easy to maintain

Featuring the same basic configuration and proven design across all models, a range of heavy duty rear axle assemblies are used in Massey Ferguson 300 Xtra Series tractors.

The rear axle assembly, along with the gearbox housing, serves as the reservoir for the hydraulic / transmission oil providing oil for all hydraulic functions whilst ensuring that all internal components are lubricated and cooled.

#### Crown Wheel and Pinion

All the tractor series feature a proven design of heavy duty crown wheel and pinion and differential unit mounted in the rear axle centre housing. To maximise traction in field applications a differential lock is specified for all tractors. This lock prevents the rear wheels turning independently. It is engaged by a pedal on the operator station. To maintain engagement the pedal should be held down and only released when traction is restored or when turning.

#### PTO

All tractors are specified with a 540rpm PTO with 35mm / 6 spline output shaft and live clutch as standard. The PTO operates smoothly and efficiently at engine speeds of 1,789rpm. This low engine rpm reduces fuel consumption and ensures durability and reliability.

#### Hydraulics

These tractors feature an open centre 17 litres/min hydraulic systems for straightforward reliable operation. An auxiliary pump of 35 litres/min is also available. A Ferguson scotch yoke pump mounted in the rear axle housing provide high pressure oil for the rear linkage lift circuit.

#### Rear Linkage

All models have fully adjustable lift rods with float position. An adjustable top link with ball ends is also supplied. The MF 345 Xtra to MF 360 Xtra have a lift capacity of 1,415 kgs. The MF 375 Xtra and MF 390 xtra have a lift capacity of 2,145 kgs.



## Front Axle

Fully adjustable to meet your needs

The **MF 300 Xtra** tractor series are all available in both 2WD and 4WD configurations to meet specific applications or operation conditions. Two wheel drive provides enhanced manoeuvrability, reduced weight, less transmission complexity and lower cost.

Two wheel drive is useful in applications where the user requires the tracking of the tractor to be altered regularly. The 2 wheel drive axle width can be adjusted easily to allow for differences in crop widths. The axle design is fully adjustable providing up to 5 alternate track width settings in 102mm steps to suit varying crop configurations and field conditions.

Four wheel drive tractors provide drive to the front axle and rear axle, providing enhanced traction, greater stability, and improved steering accuracy on loose surfaces - optional on the MF 360 Xtra, MF 375 Xtra and MF 385 Xtra. The 4WD output gearbox is mounted on the left hand side of the rear axle housing and the drive shaft runs alongside the gearbox and engine to the left hand side of the front axle improving ground clearance and providing extra protection to the drive line.

The MF 345 Xtra and MF 355 Xtra come with a simple and easy to maintain mechanical steering while the MF 350 Xtra, MF 360 Xtra, MF375 Xtra and MF 385 Xtra come with a hydrostatic steering from a fully independent hydraulic system with engine mounted pump and steering column mounted orbital unit. It makes it easy for finger-tip light steering for improved efficiency and operator comfort.





“ I want daily maintenance to be quick and easy so I can spend more time with my family. ”

## PARTS & SERVICE

### IT'S ALL ABOUT A LIFETIME OF SUPPORT

Buying, owning, and maintaining farm machinery can be complex, so having absolute peace of mind that you have great back-up and support is a hugely important consideration. As a Massey Ferguson customer you are assured of personalised, responsive, and friendly support from our network of expert dealers who truly understand your business.

There is no cut-off time for Parts and Service because a machine may be out of service. We are available to you throughout your ownership of your Massey Ferguson machine.

We take great pride and responsibility in every machine we sell and we make it our mission to keep your machinery running reliably, every time you turn the key.

Visit our website to make a parts inquiry



SCAN ME

#### How to scan on iPhone or Android

1. Open the camera app
2. Focus the camera on the QR code by gently tapping the code
3. Follow the instructions on the screen to complete the action



# Specifications

	MF 345 Xtra	MF 350 Xtra	MF 355 Xtra	MF 360 Xtra	MF 375 Xtra	MF 385 Xtra
Engine Performance						
Engine power	HP (Kw) 50 (37) @ 2250rpm		60 (45) @ 2250rpm		75 (56) @ 2200rpm	85 (63) @ 2200rpm
Max torque	Nm	172 @ 1400rpm	212 @ 1400rpm		290 @ 1400rpm	300 @ 1400rpm
PTO power at rated engine speed	44 hp**		48 hp **		69.5 hp **	70 hp**
Engine						
Engine type/no. of Cylinders/Capacity/Aspiration	AD3.152 / 3 / 2.5 / Natural		AD3.1524 / 3 / 2.5 / Turbo / Injection		4.41 / 4 / 4.1 / Natural	
Clutch		Mechanical Dual Clutch				
Transmission						
Type		8 forward x 2 reverse at max road speed of 30kph				
Power Take-off						
Live single speed - 540 rpm	@ engine rpm	1,789 rpm				
Shaft diameter/Number of splines	r	35mm / 6				
Hydraulics						
Functions	Draft control, Position control. Response control, Constant pumping					
Oil flow	litres/min	18				
System pressure	bar	200				
Auxiliary pump		-	-	-	35 l/min @ 175 bar	
Lift capacity at lower link ends	kg	1,415			2,145	
3-point linkage		Cat 1 & 2 interchangeable balls				
Brakes						
Brake type	Out board drum brakes	Oil-immersed, multi-disc				
Actuation		Mechanical				
Parking brake		Hand lever operated				
Differential lock		Mechanical				
Tyres						
Front	2WD	6 x 16		7.5 x 16		
	4WD	-		7.5 x 20	11.2 x 24	12.4 x 24
Rear		12.4 x 28		14.9 x 28	16.9 x 30	18.4 x 30
Instrumentation						
Gauges	Tachometer, hour-meter, fuel level, battery condition & water temperature					



	MF 345 Xtra		MF 350 Xtra		MF 355 Xtra		MF 360 Xtra		MF 375 Xtra		MF 385 Xtra		
		(with 6.00-16 front & 12.4/11-28 rear wheels			(with 6.00-16 front & 14.9/13-28 rear wheels		(with 7.50-16 front & 14.9/13-28 rear wheels		(with 7.50-16 front & 16.9/14-30 rear wheels		(with 7.50-16 or 12.4-11-24 front & 18.4 / 15-30 rear		
Weights and Dimensions*													
Gross weight***	kg	1,650	1,940		1,940		2,370		2,790		2,790		
Wheelbase	mm	1,892		2,022		2,130		2,350		2,350			
Overall length - (links horizontal)	mm	3,260		3,390		3,485		3,810		3,810			
Overall width (min)	mm	1,676	1,854		1,930		1,890		1,970		2,030		
Overall height over exhaust	mm	2,134	2,210		2,210		2,220		2,425		2,450		
Overall height over steering wheel	mm	1,448	1,473		1,486		1,585		1,690		1,710		
Capacities													
Fuel tank	litres	47.5	45		47.5		47.5		108		108		
Ground clearance													
Under gearbox	mm	338	380		400		400		501		501		
Front axle													
2WD		Telescopic Front Axle											
4WD		Side-drive mechanical engaged with auto-lock											
Track Adjustment													
Front	mm	1,227 - 1,36			1,245 - 1,854			1,272 - 1,880			1,271 - 1,881		
Rear	mm	1,219 - 1,930		1.320 - 2,130		1,423 - 2,134		1,438 - 2,125		1,423 - 2,134		1,423 - 2,134	
Steering													
Type		Manual	Hydrostatic		Manual		Hydrostatic		Hydrostatic		Hydrostatic		
Standard equipment													
Front Weights		6 x 25 kgs						8 x 25 kgs					

\* Approximately \*\* Manufacturer's estimate \*\*\* Gross weight includes front weights, frame, sun canopy and swinging drawbar.  
- not available

For even greater productivity a range of optional equipment is available. For full details please consult your local Massey Ferguson dealer.

Every effort has been made to ensure that the information contained in this publication is as accurate and current as possible. However, inaccuracies, errors or omissions may occur and details of the specifications may be changed at any time without notice. Therefore, all specifications should be confirmed with your Massey Ferguson Dealer or Distributor prior to any purchase.





Web: [masseyferguson.com/en\\_afr/](http://masseyferguson.com/en_afr/)  
Facebook: [www.facebook.com/masseyfergusonaf](https://www.facebook.com/masseyfergusonaf)  
Twitter: [Twitter.com/MF\\_RSA](https://twitter.com/MF_RSA)  
Instagram: [Instagram.com/masseyfergusonaf](https://www.instagram.com/masseyfergusonaf)  
YouTube: [www.youtube.com/@masseyfergusonaf](https://www.youtube.com/@masseyfergusonaf)



Massey Ferguson is a worldwide brand of AGCO Corporation.  
Massey Ferguson is a brand of AGCO.  
All rights reserved. |



**MASSEY FERGUSON**