



MF FL & FL X SERIES

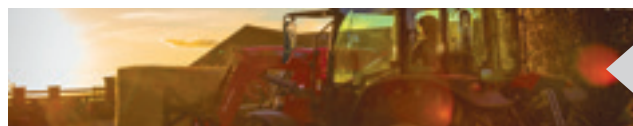
Hard working, high performance loaders

From: 3.10 to 4.96 metres - 1.35 to 3.27 tonnes



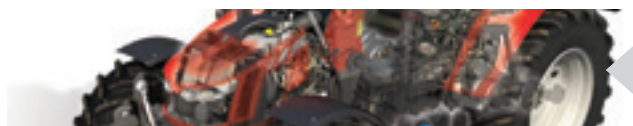
FROM MASSEY FERGUSON

Contents



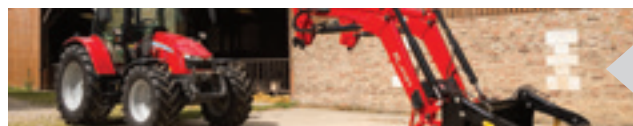
Page 04

The new generation of Massey Ferguson front loaders



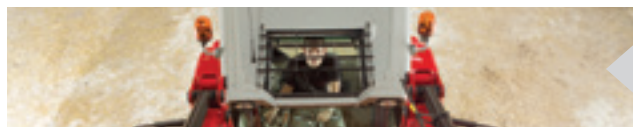
Page 08

MF FL Series – bodyscan the loader



Page 14

Easy implement attachment



Page 16

Optimum visibility and integrated controls.



Page 18

Great comfort & efficiency



Page 22

MF FL Series Loader implements: The right tools for the job

- 04 The new generation of Massey Ferguson front loaders
- 06 Offering you the best choice of loaders for your Massey Ferguson tractor
- 08 MF FL Series – bodyscan the loader
- 10 Designed and built for the most demanding tasks
- 12 Easy mounting and removing
- 14 Easy implement attachment
- 16 Optimum visibility and integrated controls.
- 18 Great comfort & efficiency
- 20 Options that fit your requirements perfectly
- 22 MF FL X Versatile loaders for everyday operations
- 24 Modern, simple, functional
- 25 Quick and simple to connect and disconnect
- 26 Delivering more
- 28 MF FL Series Loader implements: The right tools for the job
- 30 Bale handling
- 31 Bale handling and buckets
- 32 Buckets, silage feeding and handling
- 34 Forks, lifters and accessories
- 36 Specifications

Massey Ferguson Excellence



Anyone who buys an MF FL Series loader today will expect it to fulfil the latest operational and environmental standards. They will expect it to combine the very best of today's technologies with comfort, simplicity, reliability and quality day in day out on the farm. Our engineers have farming in their blood and foresight. They are eager to develop new solutions to the complex challenges of today's and tomorrow's farming.

Reliability is in our DNA. We are committed to delivering the highest quality at all times. Each component of the new MF FL Series loaders has been carefully designed, selected and assigned to the best manufacturing supplier and has been assembled following the latest manufacturing technologies.





The new generation of Massey Ferguson front loaders

MF FL SERIES

If you need a robust, reliable loader to complement your Massey Ferguson tractor then you don't need to look far. MF tractors with MF FL loaders are the ultimate combination of rugged ability, hard work and reliability.

Get the right loader for your Massey Ferguson tractor Full integration of tractor and loader is achieved easily with the MF FL Series, to suit 70 - 400 hp Massey Ferguson tractors. You can choose from either 'linear' or 'parallel' linkage, available throughout an extensive range of 29 models, along with numerous options and accessories to enhance performance and productivity.

Whatever your handling requirements, the MF FL loader range can deal with them. From day-to-day jobs to the toughest contractor work, the MF FL Series of loaders can be found working away in a wide range of applications – on many livestock and mixed farms, vegetable enterprises, amenity/municipal and landscape/forestry activities or intensive municipal operation.

There's a wide selection of loaders available, with an excellent range of heights and lift capacities, so whichever MF tractor you choose, there's a loader to perfectly complement it.



MF FL Series - The Range

| Model | Type | Maximum Lift Height - Measured at Pivot Pin | Lift Capacity to 1.5m height - At Pivot Pin |
|------------|--------------|--|--|
| MF FL.3522 | Non parallel | 3.55 m | 2,220 kg |
| MF FL.3723 | Non parallel | 3.79 m | 2,310 kg |
| MF FL.4125 | Non parallel | 4.06 m | 2,470 kg |
| MF FL.4227 | Non parallel | 4.25 m | 2,730 kg |
| MF FL.3615 | Parallel | 3.55 m | 1,540 kg |
| MF FL.3619 | Parallel | 3.55 m | 1,850 kg |
| MF FL.3817 | Parallel | 3.81 m | 1,690 kg |
| MF FL.3819 | Parallel | 3.79 m | 1,930 kg |
| MF FL.3823 | Parallel | 3.79 m | 2,270 kg |
| MF FL.4018 | Parallel | 4.02 m | 1,780 kg |
| MF FL.4121 | Parallel | 4.06 m | 2,090 kg |
| MF FL.4124 | Parallel | 4.06 m | 2,430 kg |
| MF FL.4220 | Parallel | 4.2 m | 2,000 kg |
| MF FL.4323 | Parallel | 4.25 m | 2,310 kg |
| MF FL.4327 | Parallel | 4.25 m | 2,680 kg |
| MF FL.4621 | Parallel | 4.55 m | 2,070 kg |
| MF FL.4624 | Parallel | 4.6 m | 2,420 kg |
| MF FL.4628 | Parallel | 4.6 m | 2,780 kg |
| MF FL.4722 | Parallel | 4.75 m | 2,330 kg |
| MF FL.5029 | Parallel | 4.96 m | 2,860 kg |
| MF FL.5033 | Parallel | 4.96 m | 3,270 kg |

Offering you the best choice of loaders for your Massey Ferguson tractor

MF FL X Series - The Range

| Model | Type | Maximum Lift Height - Measured at Pivot Pin | Lift Capacity to 1.5m height - At Pivot Pin |
|-------------|--------------|--|--|
| MF FL.3117X | Non Parallel | 3,10 m | 1,690 kg |
| MF FL.3419X | Non Parallel | 3,40 m | 1,880 kg |
| MF FL.3721X | Non Parallel | 3,70 m | 2,070 kg |
| MF FL.3922X | Non Parallel | 3,90 m | 2,240 kg |
| MF FL.3114X | Parallel | 3,10 m | 1,350 kg |
| MF FL.3415X | Parallel | 3,40 m | 1,540 kg |
| MF FL.3717X | Parallel | 3,70 m | 1,720 kg |
| MF FL.3919X | Parallel | 3,90 m | 1,890 kg |

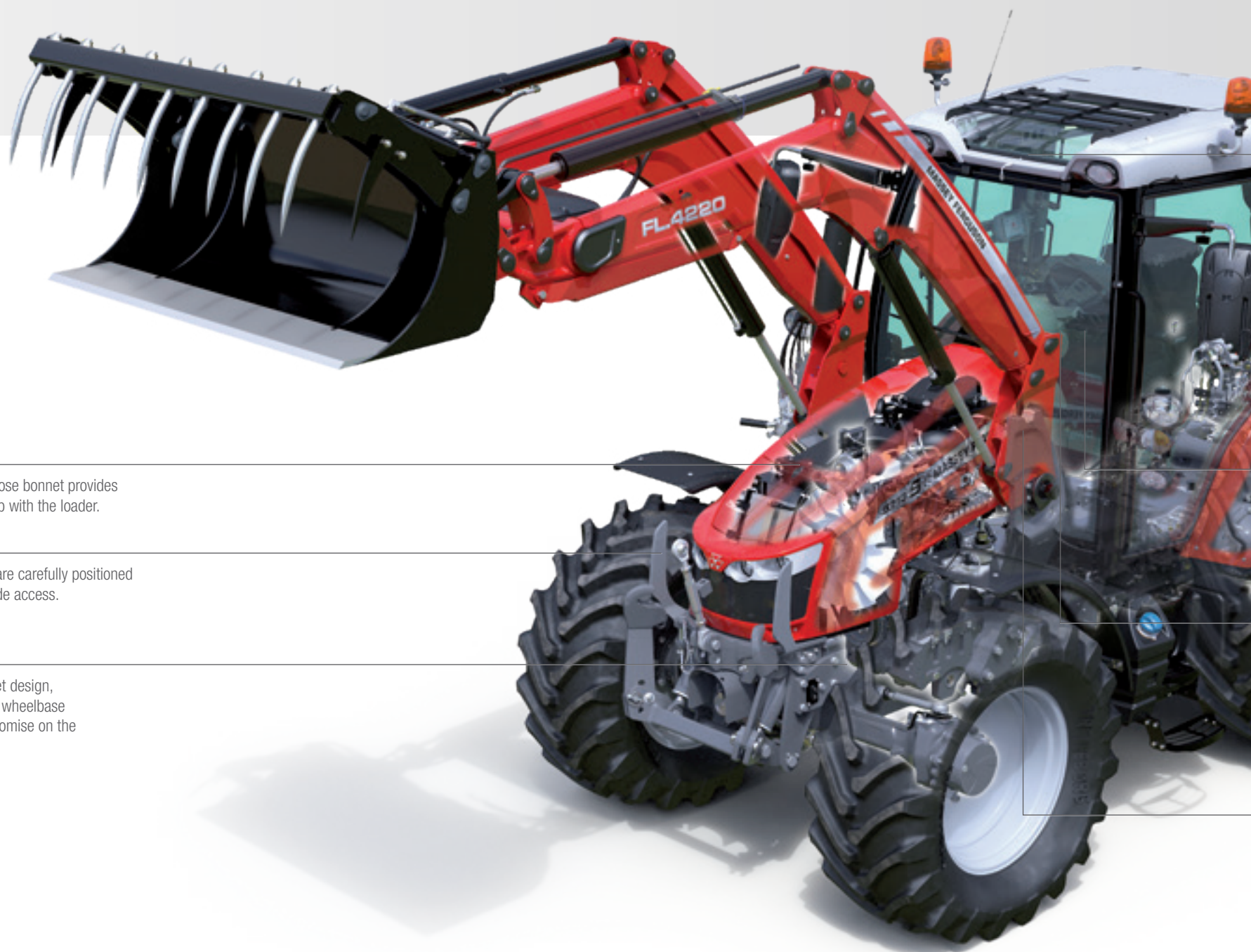


MF FL Series – bodyscan the loader

Massey Ferguson loader subframe design – The ultimate in integration

It is the ultimate in integration between two undeniably impressive pieces of machinery. Thanks to the way our tractors are designed, your purchase will become a partnership between you, your loader and your tractor; giving you an uncompromising combination of power and functionality.

MF FL SERIES



On the MF 5700 S range, the steep nose bonnet provides unrivalled front visibility to ease the job with the loader.

The loader brackets and loader itself are carefully positioned close to the bonnet so as not to impede access.

The combination of the waisted bonnet design, the profiled chassis and the generous wheelbase ensure superb visibility without compromise on the manoeuvrability and stability.



bodyscan the tractor loader combination

Massey Ferguson loader subframe design - The ultimate in integration

Optional Visio Roof * for uncompromised visibility during loader operations

The unique Massey Ferguson Power Control lever allows the operator to shuttle between forward/reverse, shift Dynashift speeds and ranges leaving the right hand free to operate the loader.

A wide range of joystick options are available to ease the job in hand

Flexibility and high performance provides excellent oil flow to operate the loader faster and safer.

Brake to neutral feature disconnects drive when brake pedal is pressed (according to models)

* Depending on ranges and models.
Check availability with your local MF dealer.

Up to 50% more durability thanks to a new design combined with forged and casted parts on the main beams.

100% more efficiency of the SoftDrive suspension thanks to clever hydraulic travel for greater operator comfort.

30% better field of vision visibility thanks to new design, new shape.

Thoughtful design means there is plenty of space between the loader arms and the bonnet so there's excellent access to the engine area and air filter.

New models with 15% increased lift capacity and new 7% increased roll-back angles offer impressive material handling abilities, particularly when using a bucket implement.

Easy connection and disconnection of loader and implement makes the whole operation quick and straightforward.

New high flow port with 33% bigger diameter and a new design straight through the cylinder bottom reduces pressure drop and increasing productivity.

The loader sub-frame sits smoothly against the tractor chassis. Its integral structure has been carefully designed by our engineers who understand how a loader and tractor need to perform.



Designed and built for the most demanding tasks

From the strength and security of the subframe to the slim yet robust design of the welded box section beams, MF FL Series loaders deliver industry-leading features that ensure maximum output and dependability from your Massey Ferguson tractor.

Designed specifically for your Massey Ferguson tractor, they offer many outstanding features to increase your efficiency.

Strengthened subframes

Subframes are available to fit most tractors in the Massey Ferguson range and now have larger load-bearing surfaces to strengthen their already robust construction and meet the demands of today's high performance tractors. The subframe extends forwards to a protective grille guard.

Subframes are designed to allow drive-in attachment, whilst the semi-automatic 'Lock & Go' system retains the loader rigidly and securely in position.

The Delta conception ensures an even draft diffusion through the subframe, while ensuring that no effort is applied on the locking pin.

Protected and concealed hydraulic hoses

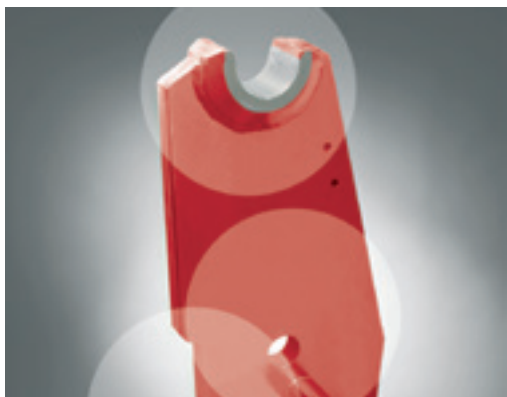
Loader beam design combines strength and excellent forward visibility, with the highest quality 'twin C-section' steel construction neatly concealing and protecting all hydraulic hoses. The strong transverse round cross-tube, which also houses and protects hydraulic components, adds strength and aids visibility through its positioning near the front of the loader.

All pivot points have greasable, replaceable bushes, giving long intervals between lubrication and enabling quick, inexpensive replacement. Also all pins are galvanised and, moreover, where stresses demand, these pins are of a larger diameter (40mm).

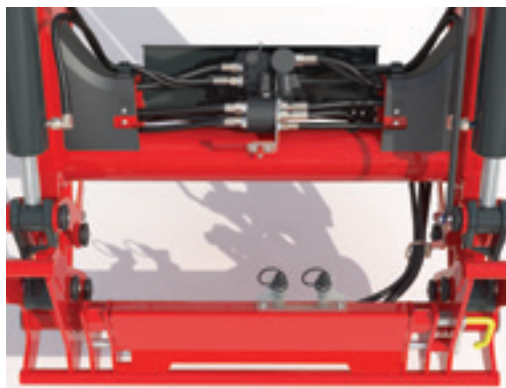
Robotised welding ensures consistency in construction throughout, whilst steel undergoes full preparation and priming before a tough and durable powder paint finish is applied.

MF FL SERIES





Straightforward and durable Delta subframe design with three points of contact



Cross-tube houses hydraulic components and provides strength without impacting the visibility



Strong double C-section loader beams



Bigger hoses diameters and new high flow oil ports on the cylinders reduces pressure drop and increase productivity



Robotised welding ensures accuracy and strength



Modern paint processes ensure long life and durability for your loaders' paintwork

Ready when you are

Easy mounting and removing

Through the application of advanced-leading technology, MF FL Series loaders provide simple practical solutions to the day-to-day challenges of modern farming, ensuring quick and easy operation from the start. And it starts with an easy mounting of the loader on your tractor and easy fitting of the right attachment on your loader for the job in hand.

Easy and Fast connections

Fast hydraulic coupling of tractor and loader is made easy by compact design connections. For faster hydraulic connection, the 'Hydroquick' or MC4 multicouplers are available as an option, whilst 'Selecto-Fix' gives similar benefits when coupling hydraulic implements to the tool carrier.



Base configuration
with flat faces single
couplers



Hydroquick coupler



MC4 quick coupler



Semi-automatic 'Lock & Go' connection system

For ease of connection and disconnection all loaders are designed with the standard 'Lock & Go' system. Requiring no tools and incorporating rigid support legs, the 'Lock & Go' system is simply designed to save time, enabling straightforward attachment/detachment.

MF FL SERIES



Step 1.
Simply drive the tractor into the parked loader. The loader will smoothly meet with the loader subframe.



Step 2.
The optional Hydroquick coupler speeds loader, hydraulic connection while avoiding oil spillage.



Step 3.
By operating the lift cylinder, the semi automatic Lock and Go system speeds and simplifies loader hook up.



Each locking pin has a green marker on the inside of the bearing box for a clear visual confirmation of pin engagement from drivers position

Five steps to a quality working day



Step 4.
Fold up the park stand.



Step 5.
Get to work!



Easy implement attachment

The MF FL Series can be fitted with a wide range of tool carriers including Euro and Euro/SMS making it possible to fit a wide variety of attachments for the job in hand. This attachment is made really easy thanks to the 'Clic-On' feature as well with the 'Selecto-Fix' option.

'Clic-on' with integrated safety function

In addition to the excellent visibility of the tool carrier, secure implement attachment is further aided by the 'Clic-on' feature. When an implement is detached, the 'Clic-on' device holds the locking pins in their retracted position. Attaching an implement and rolling back the tool carrier allows the locking pins to return to their locked position, automatically. 'Clic-on' is fitted as standard on Euro and Combi-SMS tool carriers, making implement attachment a whole lot easier and more secure.

Handle

The "Clic-on" function is activated thanks to one of the two handles available. One's on top of the tool carrier. The other one is on the left side.

Selecto-Fix

Many attachments in the range can be equipped with 'Selecto-Fix'. This provides a rapid, easy and positive hydraulic connection. The flat face couplings are very easy to clean and there is no risk of spillage or leakage.

Hydraulic implement locking

Hydraulic implement locking is also available as an option. It offers higher comfort when attaching and detaching an implement by allowing the operator to stay in the cabin.



Optimum visibility and integrated controls.

MF FL Series loaders set the standard in control and ergonomics, ensuring simple and effective operation, leading to higher levels of comfort, safety and output. You'll never have a more efficient tractor/loader combination.

MF FL Series loaders offer a range of ergonomically designed and intuitive loader control systems designed by Massey Ferguson engineers specifically for the MF tractor range.

Optimum 'feel' and control

One of the additional benefits of a Massey Ferguson tractor/loader combination is that the Power Shuttle or Power Control levers enable rapid changes of direction without use of the clutch, using the left hand. This means that the right hand is free to maintain full control of the loader.

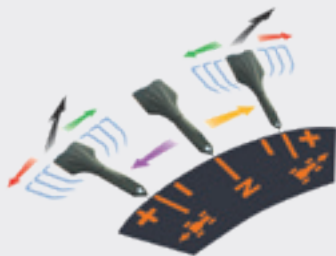
Other available options include the ability to operate the loader via tractor spool valves using either mechanical or electronic multifunction joysticks including right hand transmission control. Your choice of controls, coupled with the overall tractor and loader design, choice of high visibility roof and bonnet style will prove to be an indispensable part of your business. Giving you complete and consistent functionality combined with ease-of-use throughout your working day.



Simple, multi-function left-hand control

The exclusive Power Control lever provides convenient three-in-one, straightforward operation. Operators can shuttle between forward/reverse, shift Dynashift speeds and ranges and select neutral, leaving the right hand free to operate the loader or implement hydraulics.

- N** Neutral
- De-clutch
- Forward drive
- Reverse drive
- Change up ratio
- Change down ratio



Optional roof

Visioline roof with FOPS and ROPS on a large range of Massey Ferguson tractors



30% more visibility from inside the cab – front view

Curved arm with a low placed knee in combination with the low placed cross-tube gives a 30 % field of vision increase when the loader is positioned 450 mm above the ground, in his transport position (EU Directive 2008/2/EC). All the hydraulic pipes are perfectly integrated and routed while the cross tube is placed in a very low position to the benefit of visibility.



Loader operation

Joystick main functions:

- A. Lift
- B. Lower
- C. Fill
- D. Dump

Combined functions:

- A/C. Lift and fill
- A/D. Lift and dump
- B/C. Lower and fill
- B/D. Lower and dump
- A/C/E. Lift and close grab
- A/D/F. Lift and open grab

Combined functions with 3rd live:

- C/E. Fill & close grab
- D/F. Dump & open grab
- A/C/E. Lift, fill & close grab
- A/D/F. Lift, dump & open grab

In total control - The optional mechanical multifunction joystick has additional transmission functions such as forward/reverse and speed change for added versatility during operation. A clever new addition to the loader hydraulic control is 3rd Live which enables the operator to open/close a grab and tip or crowd an implement at the same time. This function has been very well received on Massey Ferguson telehandlers, and is now available for the MF FL loader.

Essential cab option with mechanical multifunction joystick



The MF 5700 S Essential cab option with loader electronic multifunction joystick



Efficient cab option with electronic multifunction joystick and armrest



Exclusive cab option with multipad control lever and electronic multifunction joystick (right-hand side)



Great comfort & efficiency

High on productivity... low on down-time. Serviceability, low maintenance and ease-of-use of both tractor and loader has been a key consideration in the design and construction of the MF FL series, making things simple, easy, quick and highly efficient.



Precise self-levelling – less spillage

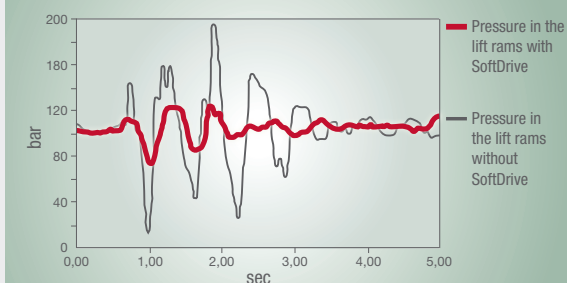
Precise and automatic control of your implement position during lift and lowering of the loader. Once the implement angle is set it stays in its position. A pallet fork for example stays levelled through the whole loader cycle with no losses of lift force out on the implement. The self levelling loaders will also benefit from an increased crowd angle (minimum 57°) at lower height (around 70 cm*). This results in less spillage over the front or back of the bucket.

* : 85 cm on with the MF FL.5033



Soft Drive suspension - 100% more efficiency

Stresses on loader and tractor, as well as the operator, can be reduced by the optional addition of the innovative 'SoftDrive' shock absorption system. Available on all models, hidden and protected inside the cross tube, 'SoftDrive' can be activated when you need it - particularly useful on rough terrain or in transport applications - or switched off for precise pallet stacking or bale handling.





MF FL-Companion

This new dealer fit option provides information on:

- Weighing system
- Position monitoring
- Weight/Cycle total counters
- Service / diagnostics
- Loader lights controls

It all comes with **Connected Features** for maximum efficiency:

- A position monitor that helps you work with better precision and safety
- An on-board weighing function that saves time during the daily work
- It allows you to transfer your working data to the cloud for secure storage, so you can follow-up anytime and anywhere with your smartphone



Fully Compatible with tractor front linkage for maximum versatility and outputs



Easy maintenance and access to the engine



Easy Servicing – outward-facing grease points easily accessible and covered



Worklights

An optional set of LED worklights is available to give you maximum visibility at night. They're perfectly integrated in to the beam and will provide maximum productivity and vision for longer working days.

Options that fit your requirements perfectly

If your original purchase did not have a subframe and loader but over time you decide you need a tractor with loader capabilities, the dealer-fit option allows you to turn it into a fully functioning loader tractor simply and quickly. All you then have to do is decide which type of functionality best suits you.

Loader Control System™ (LCS) - optimising control and driving characteristics

The system features three elements – valve, flat-faced couplings and joysticks.

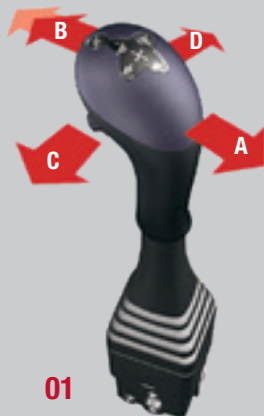
At the “heart” of LCS™ is a unique valve program; the only valves in the world that have been specially developed for the specific functions and requirements of front loaders. This uncompromising attitude offers you many advantages: outstanding control, direct response and drivability through optimally-adapted flow – for every occasion and regardless of load weight. The valve is also energy efficient and therefore enables lower fuel consumption.

Advantages of the LCS system

- Complete control of heavy loads thanks to the load-independent oil flow. The loader speed is always the same, no matter what load is carried in the implement
- Easier to perform multiple functions, such as lowering and crowding
- Energy-saving low pressure regeneration
- The cylinders are always filled with oil, which eliminates waiting time and cavitation
- Both lift and implement circuits feature a float position. In addition to improved driving benefits, this also enables easy connection and disconnection of the loader and implement
- The compact design means that the valve is ideally placed, whilst maintaining the driver's visibility

MF FL SERIES

The MF FL Series can benefit from a choice of three joystick options, all of which provide the operator with a high degree of control – it depends on the level of sophistication and type of control that's required.



01

'ErgoDrive' main functions:

- A. Lift
- B. Lower
- C. Crowd
- D. Dump

Combined functions:

- A/C. Lift and crowd
- A/D. Lift and dump
- B/D. Lower and dump
- B/C. Lower and crowd
- bucket adjustment to horizontal position

ErgoDrive LCS™ Mechanical Joystick

ErgoDrive is a simple, mechanical, cable operated single lever control. Its design allows maximum ergonomics and efficiency.

- Cable control
- Suspension on/off
- Optional 3rd function
- Optional 4th function
- In cab position adjustment



02



03

EasyDrive LCS™ Electronic Joystick

An affordable electronic previous to purely mechanical controls, performing the same functions but with the assistance of electronics – via a small, thumb-controlled joystick for effortless operation.

- 3rd and 4th function
- On/Off loader suspension
- Hydraulic implement locking function
- Float position both lowering and tilt (dump)
- Transport function
- Pressure relief function

ElectroDrive LCS™ Electronic Joystick

The new ElectroDrive LCS Joystick provides all the advantages of the two alternative options, but delivers significantly increased functionality.

- 3rd and 4th function
- Float position lift and tilt
- Quick select button: as standard On/Off for loader suspension
- At the switch of a button: Loader suspension, transport mode, AAC, shake function or turtle function for maximum accuracy.



04

01. ErgoDrive LCS 02. EasyDrive LCS 03-04. ElectroDrive LCS



* Check local homologation rules for non cab tractors

MF FL X Versatile loaders for everyday operations

Utility loaders to complement the MF tractors up to 120hp

Striving to make the jobs you do everyday that little bit simpler.

One thing we never do is compromise on quality so we only ever provide the best loaders with our machinery. This new range of parallel and non-parallel loaders has been designed specifically for this range of tractors and is the genuine article. Overall design, efficient functionality and clever little details enhance this high performance range of machinery to help you get the best out of your working day.

The MF FL X Series of utility loaders offers more benefits than any other range. Usage is simple, effective and enjoyable, the end result is maximum productivity and satisfaction.

This new range of simple and efficient loaders benefit from a reinforced conception offering even more durability than ever before.



Modern, simple, functional

Our tractor and loader combination works in harmony, integrating the most modern design and aesthetics with strength and reliability.

Total vision

Enjoy an unrestricted view of the implement during many applications. The spacious cab and low cross tube on the MF FL X loader ensures the view from the drivers seat is never impeded, making light work of loader operations.

All pipes and hoses are securely protected within the loader arm, minimising damage to the hydraulics whilst maximising visibility.

All pins are extremely strong with large dimensions, they are also zinc coated and can be lubricated. A pin lock eliminates the risk of the pins rotating.



Quick and simple to connect and disconnect

No tools are required when connecting and disconnecting the loader which means that no time is wasted in-between tasks.

For quick detaching, simply place the implement on the ground, lower the parking stands, unlatch the pins and disconnect the hydraulic and electrical connections between the loader and tractor.



Lower parking stands



Unlatch the pins



Disconnect the hydraulic and electrical connections

MF FLX

Delivering more



Adjustable guide

The guide indicates to the operator the position of the implement. It is easily adjustable and, for example, can show when the bucket or pallet forks are parallel to the ground.



Automatic implement locking with SafeLock

This smart safety function means that connecting the implement is always done with precision and accuracy. The SafeLock function ensures that the implement locking pins are always locked into position.



Versatile 3rd hydraulic function

This 3rd function maximises the output of the loader and the tractor.



The Soft Drive suspension system

system reduces constraints on the loader and on the tractors for optimum operator's comfort. The activation is manual, thanks to a tap close to the accumulator.



Subframe

The strong and reliable subframe design links the tractor and the loader. It allows a smooth and easy connection.



All pivot pins are fitted with greasers. Ensures an improved life time of the loader.



Piping is integrated into the chassis to avoid damages and improve design.



MF FL Series Loader implements: The right tools for the job

The best loaders in the world deserve the best implements, purpose-designed for the machines that carry them and to suit the widest range of tasks. Here they are - the MF FL Series Loader implement range from the world's leading manufacturer.

Precision manufactured and purpose-designed to suit MF FL Series Loaders, this range of implements provides the widest choice available. Versatile, high quality implements, developed through a rigorous R&D programme, have been organised into 6 categories for easy reference:

01 Bale handling

For square and round bale handling. A highly flexible range, for every situation and budget.

02 Buckets

Featuring a conical 'hopper-shaped' design, making them non-spill whilst easy to fill. A wide range, suitable for virtually all tasks.

03 Silage

For use in silo, or clamp and with diet feeders. Ideal for general silage management and distribution.

04 Forks

Powerful and adaptable, for pallet handling plus general manure and stone work.

05 Lifters

Assured, safe bag handling.

06 Accessories

Several essential add-ons to complement the MF FL Series Loader implement range.



Bale handling

This comprehensive range of bale handling implements has been thoughtfully designed to provide safe, efficient and reliable operation through the complete spectrum of bale handling and distribution tasks, from field to yard.



Round bale spike

Ensures safe transportation of round bales and includes a short time to eliminate bale rotation whilst stacking. Supplied with a backplate and also offered as an attachment to fit a pallet fork frame.



Quadrogrip

The market leader in handling round or square bales. The design of the hydraulically operated arms provides independent locking for easy alignment, plus virtually silent operation. Accommodates bale widths from 60 cm up to 200 cm.



Silosplit

A unique silage bale handler and splitter. Cuts out the hard work of cutting straw and silage bales with one smooth action and without the need for extra, complicated hydraulics. Supplied with an aluminium safety guard.



Flexibal

With hydraulic sideways adjustment, 125 mm rotating steel tubes gently cradle wrapped bales up to 180 cm dia., eliminating plastic damage. Once removed, the rotating tubes reveal steel spikes suitable for handling unwrapped bales or pallets up to 1000 kg. An optional hydraulic bale support enables end-on stacking.



Flexigrip

For the gentle handling of wrapped bales and 'end-on' stacking (up to three bales high), thus reducing the risk of air and moisture penetration into the bale. Hydraulically operated arms provide independent locking for easy alignment. Bale sizes from 120 cm up to 200 cm.



Unigrip

Proven, 'rounded' design with low net weight and featuring modified arms to spread pressure evenly over the bale. Similar to Flexigrip but also well suited to handling smaller square bales. Available in 2 sizes to suit bales from 90 cm to 160 cm dia.

Bale handling and buckets

All buckets are not created equal. The MF FL Series Loader buckets are simply better. The range consists of 5 series, to suit varying workloads, with all buckets characterised by a conical 'hopper-shaped' design and laser-cut ends for non-spill, non-drop ability. Also included are special Grading and High-Tipping buckets. Note, all volumes shown are 'heaped'.



Square bale fork - Safety

Available in two widths and featuring vertically folding tines for additional safety during transportation and handling. The upper section is designed to eliminate bales falling back, after unloading at full height, when reversing. Optional back-rests and large-bag lifter also available. Available in 2 widths, 140 cm (2 tines) and 190 cm (5 tines).



Square bale fork

Simple, robust, but ideal for both round and square bales. The spacing of the tines can be adjusted along the box section from 80 cm to 130 cm. An optional U-shaped vertical rear extension can be supplied to help support the top bale. Width 140 cm.



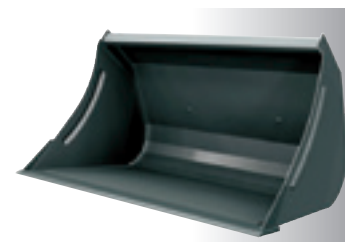
Series HT

Soil buckets, with teeth. Similar to the H Series, all the larger buckets in both of these ranges have extra reinforcement between the back and the base. Available in 4 widths from 135 cm (0.54 m³) up to 210 cm (0.82 m³). These buckets are perfectly adapted to handle rocks or to work on hard soil.



Series H

Soil buckets, the most popular and flexible in the range. A short bucket base means these are well suited to heavier tasks. Available in 5 widths from 135 cm (0.54 m³) up to 240 cm (0.95 m³).



Buckets, silage feeding and handling

From the Multibenne, a perfect all-round silage handling implement, to the versatile Silograb, this range includes some of the most reliable and innovative silage handling equipment on the market today.



Series HD

The strongest buckets in the whole range. Based upon the H Series but feature: 20% thicker steel, a more powerful cutting edge, plus wider and longer floor reinforcement. Available in 4 widths from 185 cm (0.72 m³) up to 260 cm (1.03 m³).



Series HV

For users whose tasks require large volumes e.g. carrying grain, beet and feed. The large capacity is achieved through innovative bucket design, being deeper and taller than average. Available in 4 widths from 200 cm (1.16 m³) up to 260 cm (1.85 m³).



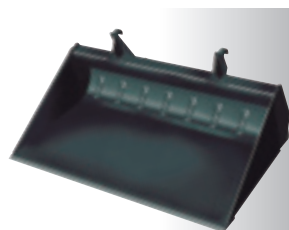
Series L & LV

An excellent choice for lighter duties and where budgets are limited. Available in 4 widths from 130 cm (0.51 m³) up to 220 cm (1.25 m³).



Precision Buckets

Designed for greater control of the emptying of material from the bucket. The long base of the bucket creates friction that slows the emptying and that gives the operator much more precision. There are two versions offered; straight bucket with parallel side gables (116 cm wide) and a conical bucket that has a narrower front (54 cm wide) for even greater precision. Both buckets are 209 cm long and 71 cm high.



Grading bucket

Designed to provide excellent driver visibility to the tip of the bucket through its low back plate. Special 10 mm thick angle iron reinforces the 20 mm subframe plates, making this bucket the ideal implement for grading tasks. Two widths are available, 220 cm (0.65 m³) or 240 cm (0.83 m³).



High tipping bucket

Increases loading height by 120 cm which means even a short, compact front loader can fill a high trailer. The bucket tips from the front edge, removing the necessity to wait for the front edge to clear the trailer side before reversing. Width 200 cm (2.00 m³).



Powergrab

Designed for silage clamp operations, Powergrab's wide jaw opening allows it to work against a vertical silage wall, whilst its conical bucket design ensures free discharge when emptying. Available in 4 widths from 185 cm (1.0 m³) up to 260 cm (1.4 m³).



Maxi grapple

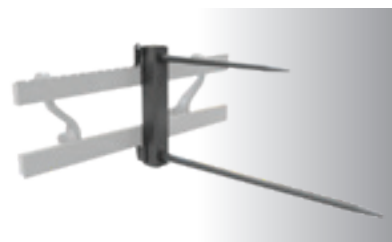
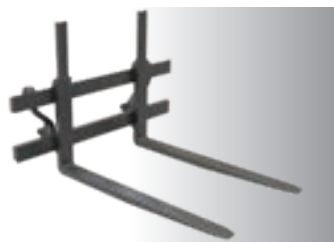
A large jaw opening enables it to handle a wide range of materials, including large bales, plus many other types of load. A grappling arm can easily be removed if required. Available in 3 widths, from 210 cm up to 260 cm, with or without teeth.



Silograb

The tines of this implement are mounted within a hardened box section, their close distribution eliminating silage spillage. Upper jaw tines follow a circular movement producing a clean cut. Available in 7 widths from 130 cm (0.69 m³) up to 250 cm (1.33 m³).

The best loaders in the world deserve the best implements, purpose-designed for the machines that carry them and to suit the widest range of tasks. Here they are - the MF FL Series Loader implement range from the world's leading manufacturer.



Pallet forks

Depending on loader dimensions, pallet forks can be specified with either: 97 cm forks (1000 or 1600 kg capacity), or 120 cm forks (2500 kg capacity). The upper profile is manufactured in one piece and is able to be adjusted laterally to suit the load, which is distributed over a large area thanks to the wide load-bearing surface. This provides a very stable fork with immense strength. Optional top grabs and spike attachments can also be fitted. A hydraulic pallet width adjustment is also available. Once fitted, the operator can change the width of the forks when staying in the cab.



Multibenne

A perfect all-round silage implement, from loading diet feeders to shovelling manure and other materials. A host of other design features make it a superb working implement. Available in 7 widths from 130 cm (0.66 m³) up to 250 cm (1.27 m³).



Silocut SE

Produces perfect silage blocks in seconds. Hardened cutting blades at both the front and side produce a clean cut surface in the clamp, critical for maintaining silage quality. Available in 4 capacities, from 0.72 m³ up to 1.38 m³.

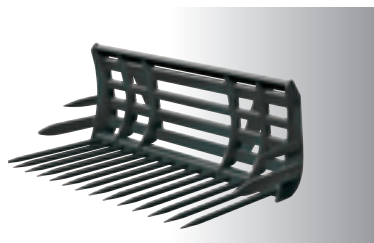


Manure forks

Manufactured with a specially hardened box section. The tines are fitted prior to painting and secured with a very high torque. A top performer with a long service life. Available in 5 widths, from 130 cm up to 230 cm.

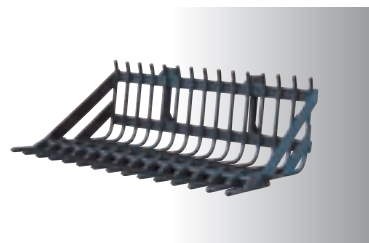
Forks, lifters and accessories

An indispensable Big Bag Lifter with a clever design feature, plus several essential accessories, complete the MF FL Loader implement range.



Universal fork

Without doubt the most powerful universal/stone fork on the market. It offers excellent visibility whilst retaining exceptional strength. The side forks feature ultra-hardwearing teeth. Available in 2 widths, 150 cm and 200 cm.



Professional stone fork

A heavy-duty fork, specially designed to retain the material in the bucket after loading. The leading edge has replaceable, downward facing teeth fixed to a rigid, high quality framework. Available in 2 widths, 150 cm and 200 cm.



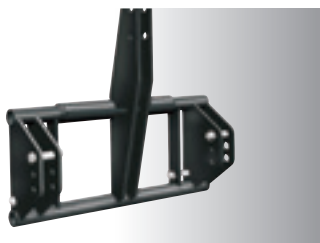
Big bag lifter

Designed with a hook that is slightly offset to the side, giving the operator an unimpaired view when connecting with the bag handle. Has a width of 120 cm, a height of 170 cm and a maximum loading of 800 kg.



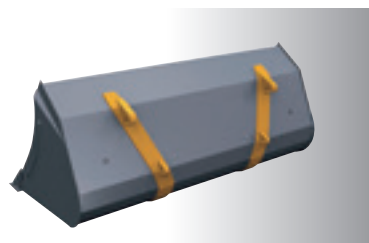
Counterweight

An essential accessory. This high quality counterweight can be fitted and removed easily. Two sizes are available, 800 kg or 1500 kg maximum ballasted weight. Supplied without ballast.



3-Point linkage

Can be used in a similar way to a tractor's 3-point linkage to help transport implements around the farm.



Euro hooks

Weld-on Euro Hooks allow any implement to be modified for use on MF FL X Series Loaders.



Multipurpose bucket

A high quality versatile bucket built to achieve many tasks : Standard bucket, hightip bucket, clamp, grading bucket. Available from 160 to 210 cm width.



Snow clearing bucket

This bucket is the perfect implement for snow clearance. The big volume will give maximum productivity. Two independent hydraulic wings, fitted, with plastic shield, will provide a great working accuracy. Several widths are available to match perfectly your tractor and loaders.



Tractor/loader recommendations for parallel loader

| Models | MF FL3615 | MF FL3619 | MF FL3817 | MF FL3819 | MF FL3823 | MF FL4018 | MF FL4121 | MF FL4124 | MF FL4220 | MF FL4323 | MF FL4327 | MF FL4621 | MF FL4624 | MF FL4628 | MF FL4722 | MF FL5029 | MF FL5033 |
|----------------------------|-----------|-----------|-----------|-----------|-----------|-----------|-----------|-----------|-----------|-----------|-----------|-----------|-----------|-----------|-----------|-----------|-----------|
| MF 4700 | • | - | • | - | - | - | - | - | - | - | - | - | - | - | | | |
| MF 5708-09 4 Cyl (Non CEE) | - | - | - | • | - | • | • | - | - | - | - | - | - | - | | | |
| MF 5708-09 3 Cyl (D4) | - | - | • | • | - | • | • | - | - | - | - | - | - | - | | | |
| MF 5710-11 4 Cyl ** | - | - | - | • | • | • | • | - | • | - | - | - | - | - | | | |
| MF 5700 S | - | - | - | • | • | • | • | - | • | - | - | - | - | - | | | |
| MF 6700 ** | - | - | - | • | • | • | • | - | • | - | - | - | - | - | | | |
| MF 6700 S *** | - | - | - | - | - | - | • | • | • | • | • | • | - | - | | | |
| MF 7714-16 S | - | - | - | - | - | - | - | - | - | • | • | • | • | | | | |
| MF 7718 S | - | - | - | - | - | - | - | - | - | • | • | • | • | • | • | | |
| MF 7720-22 S | - | - | - | - | - | - | - | - | - | - | - | - | • | • | • | | |
| MF 7724-26 S**** | - | - | - | - | - | - | - | - | - | - | - | - | • | • | • | • | • |
| MF 8700 S | - | - | - | - | - | - | - | - | - | - | - | - | - | - | - | • | • |

• Available / - Non Applicable

* : FL 3817 fitment, front track setting maximum = 1750 mm

** : FL 4220 fitment, front track setting maximum = 1900 mm

*** : FL 4121/FL4121/FL4220, loader must be specified with extended bearing boxes

****: FL 4624/FL4628 not compatible with factory fitted subframe

Tractor/loader recommendations for Non-parallel loader

| Models | MF FL.3522 | MF FL.3723 | MF FL.4125 | MF FL.4227 |
|----------------------------|------------|------------|------------|------------|
| MF 4707-09* | • | - | - | - |
| MF 5708-09 4 Cyl (Non CEE) | - | • | • | - |
| MF 5708-09 3 Cyl (D4) | - | • | • | - |
| MF 5710-11 | - | • | • | - |
| MF 5700 S | - | • | • | - |
| MF 6700 | - | • | • | - |
| MF 6700 S* | - | - | • | • |
| MF 7714-16 S | - | - | - | • |

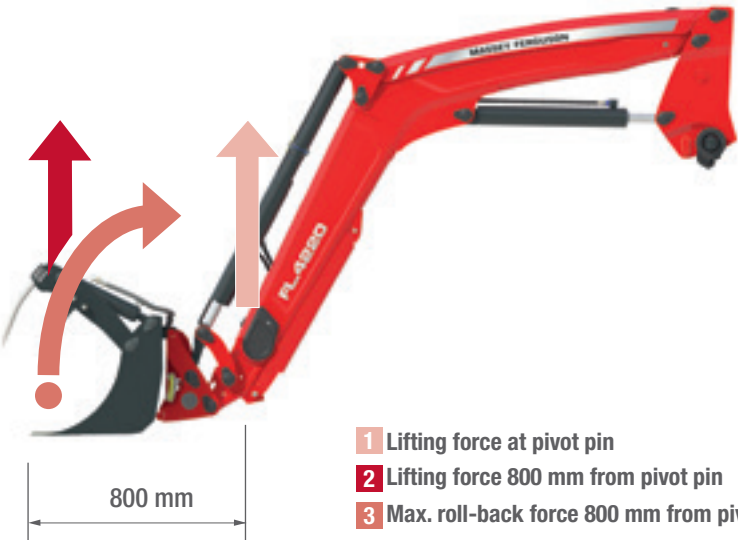
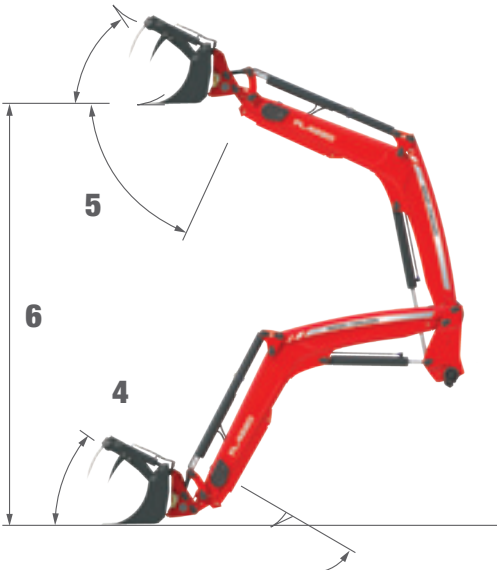
• - Available / - : Non Applicable

* : FL 4125, loader must be specified with extended bearing boxes

Non-parallel models

| Lift height |
|--|
| Maximum Lift Height - Measured at Pivot Pin - m |
| Maximum Lift Height - Under Level Bucket - m |
| Loader forces |
| Lift Capacity to 1.5m height - At Pivot Pin - kg |
| Lift Capacity to Maximum Height At Pivot Pin - kg |
| Breakout Force - At Pivot Pin- kg |
| Lift Capacity to Maximum Height - 800mm From Pivot Pin- kg |
| Lift Capacity, 1,5m Height - 800mm From Pivot Pin- kg |
| Breakout Force - 800mm From Pivot Pin- kg |
| Rollback Force at Ground Level - kg |
| Angles |
| Maximum dump angle at Maximum Height - deg |
| Maximum roll-back angle at Ground Level - deg |
| Rams diameter |
| Lift cylinders (Lifting rams diameter) - mm |
| Bucket Cylinders (Tilting rams diameter) - mm |
| Weight |
| Weight - Front loader w/o implement - kg |

| NOTES | MF FL.3522 | MF FL.3723 | MF FL.4125 | MF FL.4227 |
|-------|------------|------------|------------|------------|
| | 3.55 | 3.79 | 4.06 | 4.25 |
| 6 | 3,25 | 3,49 | 3,76 | 3,95 |
| | 2,220 | 2,310 | 2,470 | 2,730 |
| | 2,000 | 2,050 | 2,050 | 2,360 |
| 1 | 2,570 | 2,640 | 2,890 | 3,090 |
| | 1,250 | 1,290 | 1,300 | 1,590 |
| | 1,650 | 1,720 | 1,870 | 2,110 |
| 2 | 1,790 | 1,850 | 2,070 | 2,270 |
| | | | | |
| 3 | 2,430 | 3,420 | 3,420 | 4,030 |
| | | | | |
| 5 | 58 | 58 | 56 | 57 |
| 4 | 48 | 48 | 48 | 48 |
| | | | | |
| | 80 | 80 | 85 | 90 |
| | 75 | 85 | 85 | 90 |
| | | | | |
| | 450 | 515 | 560 | 630 |



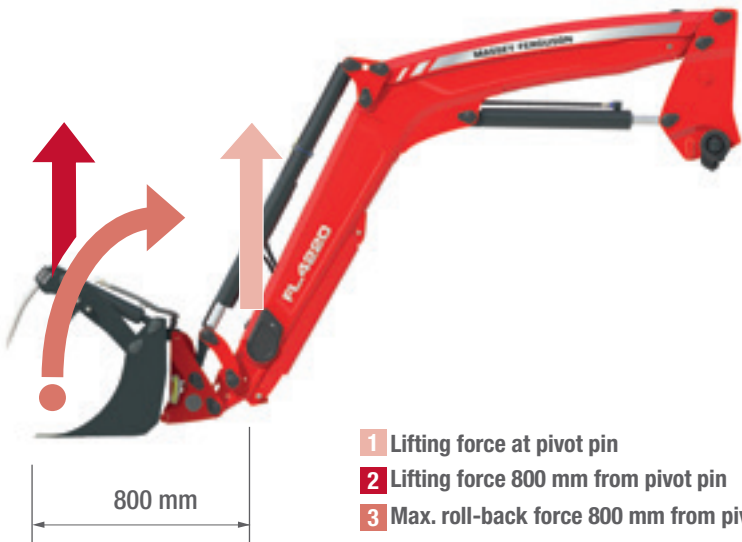
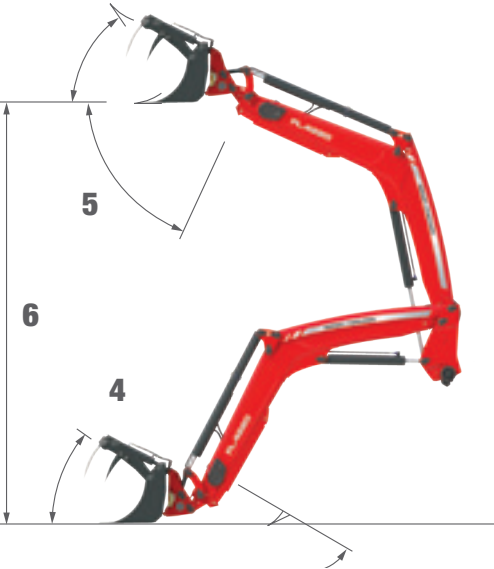
- 1 Lifting force at pivot pin
- 2 Lifting force 800 mm from pivot pin
- 3 Max. roll-back force 800 mm from pivot pin



Parallel models

| Lift height |
|--|
| Maximum Lift Height - Measured at Pivot Pin - m |
| Maximum Lift Height - Under Level Bucket - m |
| Loader forces |
| Lift Capacity to 1.5m height - At Pivot Pin - kg |
| Lift Capacity to Maximum Height At Pivot Pin - kg |
| Breakout Force - At Pivot Pin - kg |
| Lift Capacity to Maximum Height - 800mm From Pivot Pin- kg |
| Lift Capacity, 1,5m Height - 800mm From Pivot Pin- kg |
| Breakout Force - 800mm From Pivot Pin- kg |
| Rollback Force at Ground Level |
| Angles |
| Maximum Dump Angle at Maximum height - deg |
| Maximum Rollback Angle at ground level - deg |
| Maximum Re-scooped Rollback Angle (700 mm from ground level) - deg |
| Rams diameter |
| Lift cylinders (Lifting rams diameter) - mm |
| Bucket Cylinders (titing rams diameter) - mm |
| Weight |
| Weight - Front loader w/o implement- kg |

| NOTES | MF FL.3615 | MF FL.3619 | MF FL.3817 | MF FL.3819 | MF FL.3823 | MF FL.4018 | MF FL.4121 |
|-------|------------|------------|------------|------------|------------|------------|------------|
| | 3.55 | 3.55 | 3.81 | 3.79 | 3.79 | 4.02 | 4.06 |
| 6 | 3.25 | 3.25 | 3.51 | 3.49 | 3.49 | 3,72 | 3,76 |
| | 1,540 | 1,850 | 1,690 | 1,930 | 2,270 | 1,780 | 2,090 |
| 1 | 1,370 | 1,660 | 1,540 | 1,710 | 2,020 | 1,570 | 1,720 |
| | 1,810 | 2,160 | 1,970 | 2,220 | 2,600 | 2,040 | 2,460 |
| | 1,550 | 1,850 | 1,740 | 1,920 | 2,260 | 1,780 | 1,980 |
| 2 | 1,570 | 1,870 | 1,760 | 1,940 | 2,280 | 1,820 | 2,100 |
| 2 | 1,630 | 1,960 | 1,830 | 1,990 | 2,320 | 1,910 | 2,290 |
| | | | | | | | |
| 3 | 2,390 | 2,870 | 3,430 | 3,360 | 3,360 | 3,400 | 3,370 |
| | | | | | | | |
| 5 | 58 | 58 | 53 | 58 | 58 | 54 | 57 |
| 4 | 48 | 48 | 50 | 48 | 48 | 49 | 48 |
| 4 | 58 | 58 | 58 | 58 | 58 | 60 | 58 |
| | | | | | | | |
| | 70 | 75 | 75 | 75 | 80 | 75 | 80 |
| | 75 | 80 | 85 | 85 | 85 | 85 | 85 |
| | | | | | | | |
| | 520 | 520 | 525 | 575 | 575 | 580 | 620 |



- 1 Lifting force at pivot pin
- 2 Lifting force 800 mm from pivot pin
- 3 Max. roll-back force 800 mm from pivot pin

| MF FL.4124 | MF FL.4220 | MF FL.4323 | MF FL.4327 | MF FL.4621 | MF FL.4624 | MF FL.4628 | MF FL.4722 | MF FL.5029 | MF FL.5033 |
|------------|------------|------------|------------|------------|------------|------------|------------|------------|------------|
| 4.06 | 4.2 | 4.25 | 4.25 | 4.55 | 4.6 | 4.6 | 4.75 | 4.96 | 4.96 |
| 3,76 | 3,90 | 3,95 | 3,95 | 4,25 | 4,30 | 4,30 | 4,45 | 4,66 | 4,66 |
| 2,430 | 2,000 | 2,310 | 2,680 | 2,070 | 2,420 | 2,780 | 2,230 | 2,860 | 3,270 |
| 2,010 | 1,650 | 1,980 | 2,310 | 1,800 | 2,050 | 2,360 | 1,840 | 2,170 | 2,510 |
| 2,850 | 2,350 | 2,640 | 3,040 | 2,340 | 2,760 | 3,150 | 2,540 | 3,380 | 3,860 |
| 2,300 | 1,930 | 2,140 | 2,470 | 1,980 | 2,170 | 2,490 | 2,000 | 2,260 | 2,590 |
| 2,440 | 2,020 | 2,350 | 2,700 | 2,110 | 2,460 | 2,810 | 2,280 | 2,460 | 2,810 |
| 2,640 | 2,160 | 2,470 | 2,840 | 2,230 | 2,620 | 2,990 | 2,430 | 3,190 | 3,630 |
| 3,910 | 3,420 | 3,400 | 4,540 | 4,000 | 3,970 | 4,600 | 4,580 | 4,510 | 4,510 |
| 57 | 54 | 57 | 57 | 53 | 54 | 54 | 55 | 53 | 53 |
| 48 | 49 | 48 | 48 | 52 | 49 | 49 | 51 | 47 | 47 |
| 58 | 58 | 58 | 58 | 61 | 58 | 58 | 57 | 58 | 58 |
| 85 | 80 | 85 | 90 | 85 | 90 | 95 | 90 | 90 | 95 |
| 90 | 85 | 85 | 95 | 90 | 90 | 100 | 100 | 100 | 100 |
| 620 | 625 | 720 | 720 | 750 | 760 | 760 | 820 | 830 | 830 |

MF FL X models

| | UTILITY MODELS PARALLEL | | | | |
|--|-------------------------|--------------|--------------|--------------|--------------|
| | NOTES | MF FL.3114 X | MF FL.3415 X | MF FL.3717 X | MF FL.3919 X |
| | | | | | |
| Maximum Lift Height - Measured at Pivot Pin - m | | 3.10 | 3.40 | 3.70 | 3.90 |
| Maximum Lift Height - Under Level Bucket - m | 6 | 2.90 | 3.20 | 3.50 | 3.70 |
| | | | | | |
| Lift Capacity to 1.5m height - At Pivot Pin - kg | 1 | 1,350 | 1,540 | 1,720 | 1,890 |
| Lift Capacity to Maximum Height At Pivot Pin* - kg | 1 | 1,090 | 1,260 | 1,360 | 1,450 |
| Breakout Force - At Pivot Pin* - kg | | 1,800 | 1,950 | 2,170 | 2,370 |
| Lift Capacity to Maximum Height - 800mm Forward of Pivot Pin* - kg | | 1,220 | 1,520 | 1,590 | 1,680 |
| Lift Capacity to 1.5m Height - 800mm Forward of Pivot Pin* - kg | 2 | 1,400 | 1,560 | 1,710 | 1,890 |
| Breakout Force - 800mm Forward of Pivot Pin* - kg | | 1,580 | 1,660 | 1,850 | 2,080 |
| Rollback Force at Ground Level - 800mm Forward of Pivot Pin* - kg | 3 | 1,910 | 1,890 | 2,280 | 2,740 |
| | | | | | |
| Maximum dump angle at Maximum Height - deg | 4 | 50 | 50 | 49 | 46 |
| Maximum roll-back angle at Ground Level - deg | 5 | 42 | 44 | 42 | 43 |
| | | | | | |
| Lifting rams diameter - mm | | 60 | 65 | 70 | 75 |
| Tilting rams diameter - mm | | 70 | 70 | 75 | 80 |
| | | | | | |
| Weight (Standard configuration) - kg | | 360 | 390 | 420 | 440 |

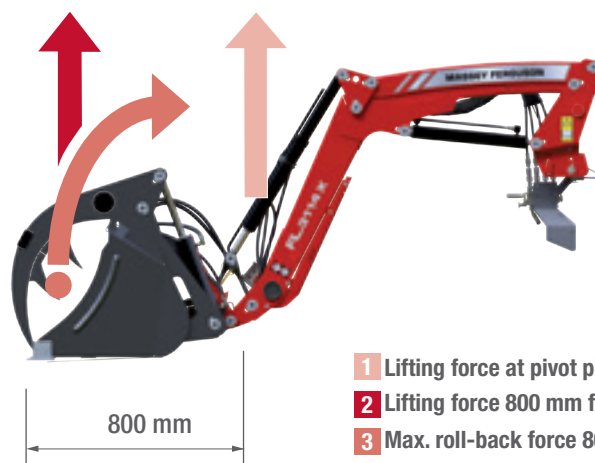
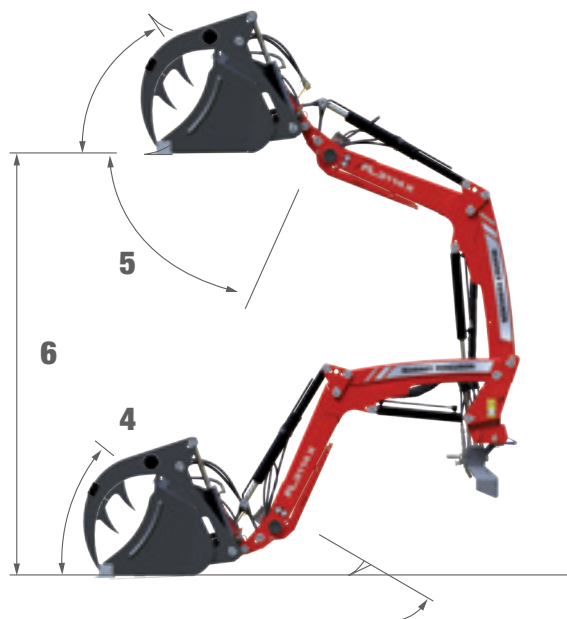
Tractor/loader recommendations for MF FL X loader

| Models | MF FL.3117 X | MF FL.3114 X | MF FL.3419 X | MF FL.3416 X | MF FL.3720 X | MF FL.3717 X | MF FL.3922 X | MF FL.3919 X |
|----------------------------|--------------|--------------|--------------|--------------|--------------|--------------|--------------|--------------|
| MF 3700 S / F / WF | • | • | - | - | - | - | - | - |
| MF 4707-09 | - | - | • | • | • | - | - | - |
| MF 5708-09 4 Cyl (Non CEE) | - | - | - | - | • | • | • | • |
| MF 5708-09 3 Cyl (D4) | - | - | - | - | • | • | • | • |
| MF 5710-11 | - | - | - | - | • | • | • | • |
| MF 5700 S | - | - | - | - | • | • | • | • |
| MF 6700 S | - | - | - | - | • | • | • | • |

• - Available / - : Non Applicable

UTILITY NON-PARALLEL MODELS

| MF FL.3117 X | MF FL.3419 X | MF FL.3721 X | MF FL.3922 X |
|--------------|--------------|--------------|--------------|
| 3.10 | 3.40 | 3.70 | 3.90 |
| 2.90 | 3.20 | 3.50 | 3.70 |
| 1,690 | 1,880 | 2,070 | 2,240 |
| 1,380 | 1,550 | 1,650 | 1,740 |
| 2,210 | 2,360 | 2,580 | 2,790 |
| 870 | 970 | 1,010 | 1,080 |
| 1,210 | 1,370 | 1,520 | 1,670 |
| 1,450 | 1,600 | 1,770 | 1,960 |
| 1,880 | 1,910 | 2,300 | 2,760 |
| 50 | 50 | 49 | 46 |
| 42 | 44 | 42 | 43 |
| 65 | 70 | 75 | 80 |
| 65 | 70 | 75 | 80 |
| 310 | 335 | 360 | 390 |



- 1** Lifting force at pivot pin
- 2** Lifting force 800 mm from pivot pin
- 3** Max. roll-back force 800 mm from pivot pin



MASSEY FERGUSON

A world of experience. Working with you.



Web: www.MasseyFerguson.com

Facebook: www.Facebook.com/MasseyFergusonGlobal

Twitter: [Twitter.com/MF_EAME](https://twitter.com/MF_EAME)

Instagram: [Instagram.com/MasseyFergusonGlobal](https://www.instagram.com/MasseyFergusonGlobal)

YouTube: www.YouTube.com/MasseyFergusonGlobal

Blog: Blog.MasseyFerguson.com



MASSEY FERGUSON® is a worldwide brand of AGCO.
© AGCO Limited. 2018 | A-A-16697/0218 | English/0218



Responsible forest management