

MF FL & FL X SERIES

FROM: 3.10 – 4.96 METRES, 1.35 – 3.27 TONNES

HARD WORKING,
HIGH PERFORMANCE
LOADERS



MASSEY FERGUSON

BORN TO **FARM**

THE NEW GENERATION OF MASSEY FERGUSON FRONT LOADERS

If you need a robust, reliable loader to complement your Massey Ferguson tractor then you don't need to look far. MF tractors with MF FL loaders are the ultimate combination of rugged ability, hard work and reliability.

Get the right loader for your Massey Ferguson tractor. Full integration of tractor and loader is achieved easily with the MF FL Series, to suit 75–425 hp Massey Ferguson tractors. You can choose from either 'linear' or 'parallel' linkage, available throughout an extensive range of 29 models, along with numerous options and accessories to enhance performance and productivity.

Whatever your handling requirements, the MF FL loader range can deal with them. From day-to-day jobs to the toughest contractor work, the MF FL series of loaders can be found working away in a wide range of applications – on many livestock and mixed farms, vegetable enterprises, amenity/municipal and landscape/forestry activities or intensive municipal operations.



DESIGNED AND BUILT FOR THE MOST DEMANDING TASKS

06



MF FL SERIES AT A GLANCE 04

MF FL X VERSATILE LOADERS FOR EVERYDAY OPERATIONS

20



18 MF FL E-LOADERS

26 MF FL SERIES LOADER IMPLEMENTS: THE RIGHT TOOLS FOR THE JOB



- MF FL SERIES AT A GLANCE 04
- DESIGNED AND BUILT FOR THE MOST DEMANDING TASKS 06
- OPTIMUM VISIBILITY AND INTEGRATED CONTROLS 12
- GREAT COMFORT & EFFICIENCY 14
- OPTIONS THAT FIT YOUR REQUIREMENTS PERFECTLY 16
- MF FL E-LOADERS 18
- MF FL X VERSATILE LOADERS 20
- MODERN, SIMPLE, FUNCTIONAL 22
- MF FL SERIES LOADER IMPLEMENTS:
THE RIGHT TOOLS FOR THE JOB 26
- SPECIFICATIONS 34

MF FL SERIES AT A GLANCE

MF FL X SERIES

Model	Type	Maximum Lift Height - Measured at Pivot Pin	Lift Capacity to 1.5 m height - At Pivot Pin
MF FL.3117X	Non Parallel	3.10 m	1,690 kg
MF FL.3419X	Non Parallel	3.40 m	1,880 kg
MF FL.3720X	Non Parallel	3.70 m	2,070 kg
MF FL.3922X	Non Parallel	3.90 m	2,240 kg
MF FL.3114X	Parallel	3.10 m	1,350 kg
MF FL.3416X	Parallel	3.40 m	1,540 kg
MF FL.3717X	Parallel	3.70 m	1,720 kg
MF FL.3919X	Parallel	3.90 m	1,890 kg

MF FL SERIES

Model	Type	Maximum Lift Height - Measured at Pivot Pin	Lift Capacity to 1.5 m height - At Pivot Pin
MF FL.3522	Non parallel	3.55 m	2,220 kg
MF FL.3723	Non parallel	3.79 m	2,310 kg
MF FL.4125	Non parallel	4.06 m	2,470 kg
MF FL.4227	Non parallel	4.25 m	2,730 kg
MF FL.3615	Parallel	3.55 m	1,540 kg
MF FL.3619	Parallel	3.55 m	1,850 kg
MF FL.3817	Parallel	3.81 m	1,690 kg
MF FL.3819	Parallel	3.79 m	1,930 kg
MF FL.3823	Parallel	3.79 m	2,270 kg
MF FL.4018	Parallel	4.02 m	1,780 kg
MF FL.4121	Parallel	4.06 m	2,090 kg
MF FL.4124	Parallel	4.06 m	2,430 kg
MF FL.4220	Parallel	4.2 m	2,000 kg
MF FL.4323	Parallel	4.25 m	2,310 kg
MF FL.4327	Parallel	4.25 m	2,680 kg
MF FL.4621	Parallel	4.55 m	2,070 kg
MF FL.4624	Parallel	4.6 m	2,420 kg
MF FL.4628	Parallel	4.6 m	2,780 kg
MF FL.4722	Parallel	4.75 m	2,330 kg
MF FL.5033	Parallel	4.96 m	3,270 kg

Check local homologation rules for non cab tractors.

MASSEY FERGUSON LOADER SUBFRAME DESIGN - THE ULTIMATE IN INTEGRATION

between two undeniably impressive pieces of machinery. Thanks to the way our tractors are designed, your purchase will become a partnership between you, your loader and your tractor; giving you an uncompromising combination of power and functionality.

Up to 50% more durability thanks to the design combining forged and cast components which form the main beams.

New high flow port with 33% bigger diameter and a new design straight through the cylinder bottom reduces pressure drop and increasing productivity.

New models with 15% increased lift capacity and new 7% increased roll-back offer improved material handling abilities, particularly when using buckets.

100% more efficiency of the SoftDrive suspension thanks to clever hydraulic travel for greater operator comfort.

30% increased field of vision thanks to the new shape and design.

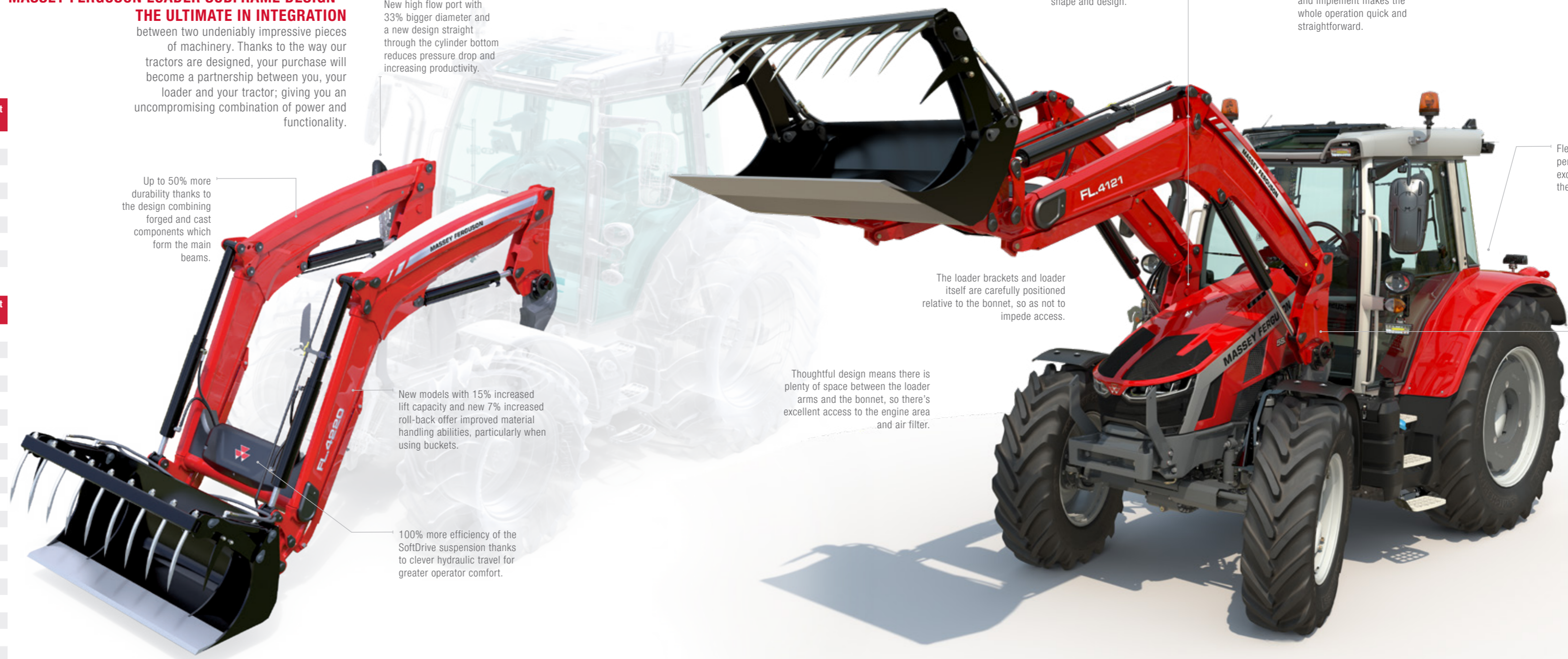
Easy connection and disconnection of loader and implement makes the whole operation quick and straightforward.

Flexibility and high performance provides excellent oil flow to operate the loader faster and safer.

The loader brackets and loader itself are carefully positioned relative to the bonnet, so as not to impede access.

Thoughtful design means there is plenty of space between the loader arms and the bonnet, so there's excellent access to the engine area and air filter.

The loader sub-frame sits smoothly against the tractor chassis. Its integral structure has been carefully designed by our engineers who understand how a loader and tractor need to perform.



DESIGNED AND BUILT FOR THE MOST DEMANDING TASKS

FROM THE STRENGTH AND SECURITY OF THE SUBFRAME TO THE SLIM YET ROBUST DESIGN OF THE WELDED BOX SECTION BEAMS, MF FL SERIES LOADERS DELIVER INDUSTRY-LEADING FEATURES THAT ENSURE MAXIMUM OUTPUT AND DEPENDABILITY FROM YOUR MASSEY FERGUSON TRACTOR.



DESIGNED SPECIFICALLY FOR YOUR MASSEY FERGUSON TRACTOR, THEY OFFER MANY OUTSTANDING FEATURES TO INCREASE YOUR EFFICIENCY.

Strengthened subframes

Subframes are available to fit most tractors in the Massey Ferguson range and now have larger load-bearing surfaces to strengthen their already robust construction and meet the demands of today's high

performance tractors. The subframe extends forwards to a protective grille guard.

Subframes are designed to allow drive-in attachment, whilst the Semi-automatic 'Lock & Go' system retains the loader rigidly and securely in position.

The Delta structure distributes draft forces through the subframe, while keeping the locking pins free of stress.

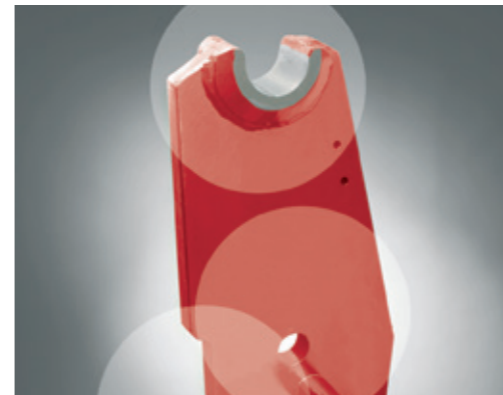
Protected and concealed hydraulic hoses

Loader beam design combines strength and excellent forward visibility, with the highest quality 'twin C-section' steel construction neatly concealing and protecting all hydraulic hoses. The strong transverse round cross-tube, which also houses and protects hydraulic components, adds strength and aids visibility through its positioning near the front of the loader.

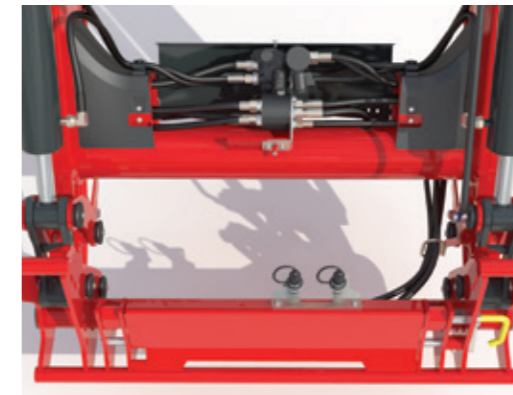
All pivot points have greasable, replaceable bushes, giving long intervals between

lubrication and enabling quick, inexpensive replacement. All pins are galvanised and, where stresses require, these pins are of larger 40 mm diameter.

Robotised welding ensures consistency in construction, while steel undergoes full preparation and priming before a tough and durable powder paint finish is applied.



▲ Straightforward and durable Delta subframe design with three points of contact.



▲ Cross-tube houses hydraulic components and provides strength without impacting visibility.



▲ Strong double C-section loader beams.



▲ Large diameter hoses and new high flow oil ports on the cylinders optimise flow rates and increase productivity.



▲ Robotised welding ensures accuracy and strength.



▲ Modern paint processes ensure long life and durability for your loaders' paintwork.

READY WHEN YOU ARE

EASY MOUNTING AND REMOVAL

Through the application of advanced, leading technology, MF FL Series loaders provide simple practical solutions to the day-to-day challenges of modern farming, ensuring quick and easy operation from the start. And it starts with easy mounting of the loader on your tractor and easy fitting of the right attachment to your loader for the job in hand.

Easy and fast connections

Fast connecting of your tractor and loader hydraulics is made easy by the advanced coupling design. For faster hydraulic connection, the quick coupling multicouplers are available as an option, while 'Selecto-Fix' gives similar benefits when coupling hydraulic implements to the tool carrier.



▲ Base configuration with flat face single couplers



▲ Quick coupler



▲ Quick coupling multicouplers



SEMI-AUTOMATIC 'LOCK & GO' CONNECTION SYSTEM

For ease of connection and removal all loaders are designed with the standard 'Lock & Go' system. Requiring no tools and incorporating rigid support legs, the 'Lock & Go' system is simply designed to save time, enabling straightforward attachment/detachment.



▲ **STEP 3.**
By operating the lift cylinder, the semi-automatic 'Lock and Go' system speeds and simplifies loader hook up.



Each locking pin has a green marker on the inside of the bearing box for clear visual confirmation of pin engagement from driver's position.



▲ **STEP 4.**
Fold up the park stand.



▲ **STEP 5.**
Get to work!

FIVE STEPS

TO A QUALITY WORKING DAY



▲ **STEP 1.**
Simply drive the tractor into the parked loader. The loader will smoothly meet with the loader subframe.



▲ **STEP 2.**
The optional quick coupler speeds loader, hydraulic connection while avoiding oil spillage.

EASY IMPLEMENT ATTACHMENT

The MF FL series can be fitted with a wide range of tool carriers including Euro and Euro/SMS making it possible to fit a wide variety of attachments for the job in hand. Attachment is made really easy thanks to the 'Clip On' feature as well as with the 'Selecto-Fix' option.



'CLIP ON' WITH INTEGRATED SAFETY FUNCTION

In addition to the excellent visibility of the tool carrier, secure implement attachment is further aided by the 'Clip On' feature. When an implement is detached, the 'Clip On' device holds the locking pins in their retracted position. Attaching an implement and rolling

back the tool carrier allows the locking pins to return to their locked position, automatically. 'Clip On' is fitted as standard on Euro and Combi-SMS tool carriers, making implement attachment a whole lot easier and more secure.



Selecto-Fix

Many attachments in the range can be equipped with 'Selecto-Fix'. This provides a rapid, easy and positive hydraulic connection. The flat face couplings are very easy to clean and there is no risk of spillage or leakage.



Hydraulic implement locking

Hydraulic implement locking is also available as an option. It offers higher comfort when attaching and detaching an implement by allowing the operator to stay in the cabin.



Handle

The 'Clip On' function is activated using one of the two handles available. There is one on top of the tool carrier. The other is on the left side.

OPTIMUM VISIBILITY AND INTEGRATED CONTROLS.

One of the additional benefits of a Massey Ferguson tractor/loader combination is that the Power Shuttle or Power Control levers enable rapid changes of direction without the clutch, just by using the left hand. This means that the right hand is free to maintain full control of the loader.



You can also operate the loader via tractor spool valves using either mechanical or electronic multifunction joystick, which also allows right-hand transmission control.



- N** Neutral
- De-clutch
- Forward drive
- Reverse drive
- Change up ratio
- Change down ratio

SIMPLE, MULTI-FUNCTION LEFT-HAND CONTROL

The exclusive Power Control lever provides convenient three-in-one, straightforward operation. Operators can shuttle between forward/reverse, shift Dynashift speeds and ranges and select neutral, leaving the right hand free to operate the loader or implement hydraulics.



30% MORE VISIBILITY FROM INSIDE THE CAB – FRONT VIEW

Curved arm with a low placed knee in combination with the low placed cross-tube gives a 30% field of vision increase when the loader is positioned 450 mm above the ground, in its transport position (EU Directive 2008/2/EC). All the hydraulic pipes are perfectly integrated and routed, while the cross tube is placed in a very low position which benefits visibility. The optional Visio roof with FOPS and ROPS further improves the visibility.

IN TOTAL CONTROL

The optional mechanical or electronic multifunction joystick has additional transmission functions such as forward/reverse and speed change for added versatility during operation. A clever option for the loader hydraulic control is 3rd Live which enables the operator to open/close a grab while tipping or crowding an implement at the same time.



LOADER OPERATION

JOYSTICK MAIN FUNCTIONS:

- A. Lift
- B. Lower
- C. Fill
- D. Dump

COMBINED FUNCTIONS:

- A/C. Lift and fill
- A/D. Lift and dump
- B/C. Lower and fill
- B/D. Lower and dump
- A/C/E. Lift and close grab
- A/D/F. Lift and open grab

COMBINED FUNCTIONS WITH 3RD LIVE:

- C/E. Fill & close grab
- D/F. Dump & open grab
- A/C/E. Lift, fill & close grab
- A/D/F. Lift, dump & open grab



Essential cab option with mechanical multifunction joystick.



The MF 5S/ 5M Essential cab option with loader electronic multifunction joystick on armrest.



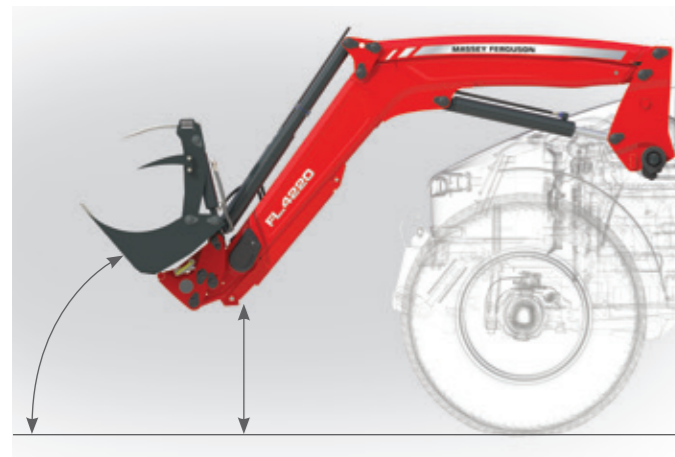
Efficient and Exclusive cab options with MultiPad control lever and electronic multifunction joystick (right-hand side).



The MF Exclusive cab option with MultiPad control lever and electronic joystick.

GREAT COMFORT & EFFICIENCY

THE DESIGN AND CONSTRUCTION OF THE MF FL SERIES MAKE THE TRACTOR/LOADER COMBINATION EASY TO USE AND EFFICIENT.



PRECISE SELF-LEVELLING – LESS SPILLAGE

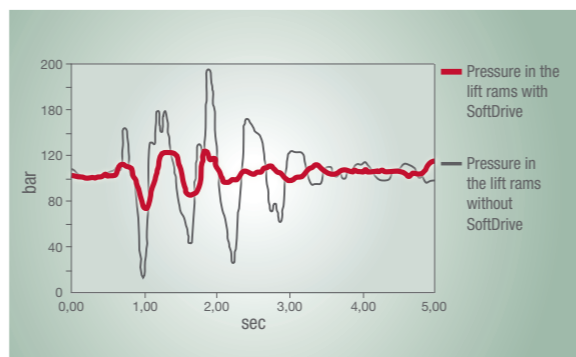
Precise and automatic control of your implement position during lifting and lowering of the loader. Once the implement angle is set, it stays in that position. A pallet fork, for example remains level through the whole loader cycle with no losses of lift force out on the implement

The self-levelling loaders also benefit from an increased crowd angle (minimum 57°) at lower height (around 70 cm*). This results in less spillage over the front or back of the bucket.



SOFT DRIVE SUSPENSION - 100% MORE EFFICIENCY

Stresses on the loader and tractor, as well as the operator, can be reduced by the optional addition of the innovative 'SoftDrive' shock absorption system. Available on all models, hidden and protected inside the cross tube, 'SoftDrive' can be activated when you need it - particularly useful on rough terrain or in transport applications - or you can switch it off for precise pallet stacking or bale handling.



DEALER KIT : MF FL-COMPANION

In addition to our factory-fitted E-Loader, there is a dealer-fitted possibility, which provides:

- ▶ Load weighing
- ▶ Implement Position monitoring
- ▶ App and cloud service
- ▶ Maintenance reminders



FULLY COMPATIBLE with tractor front linkage for maximum versatility and outputs.



Easy maintenance and access to the engine.



EASY SERVICING – outward-facing grease points easily accessible and covered.

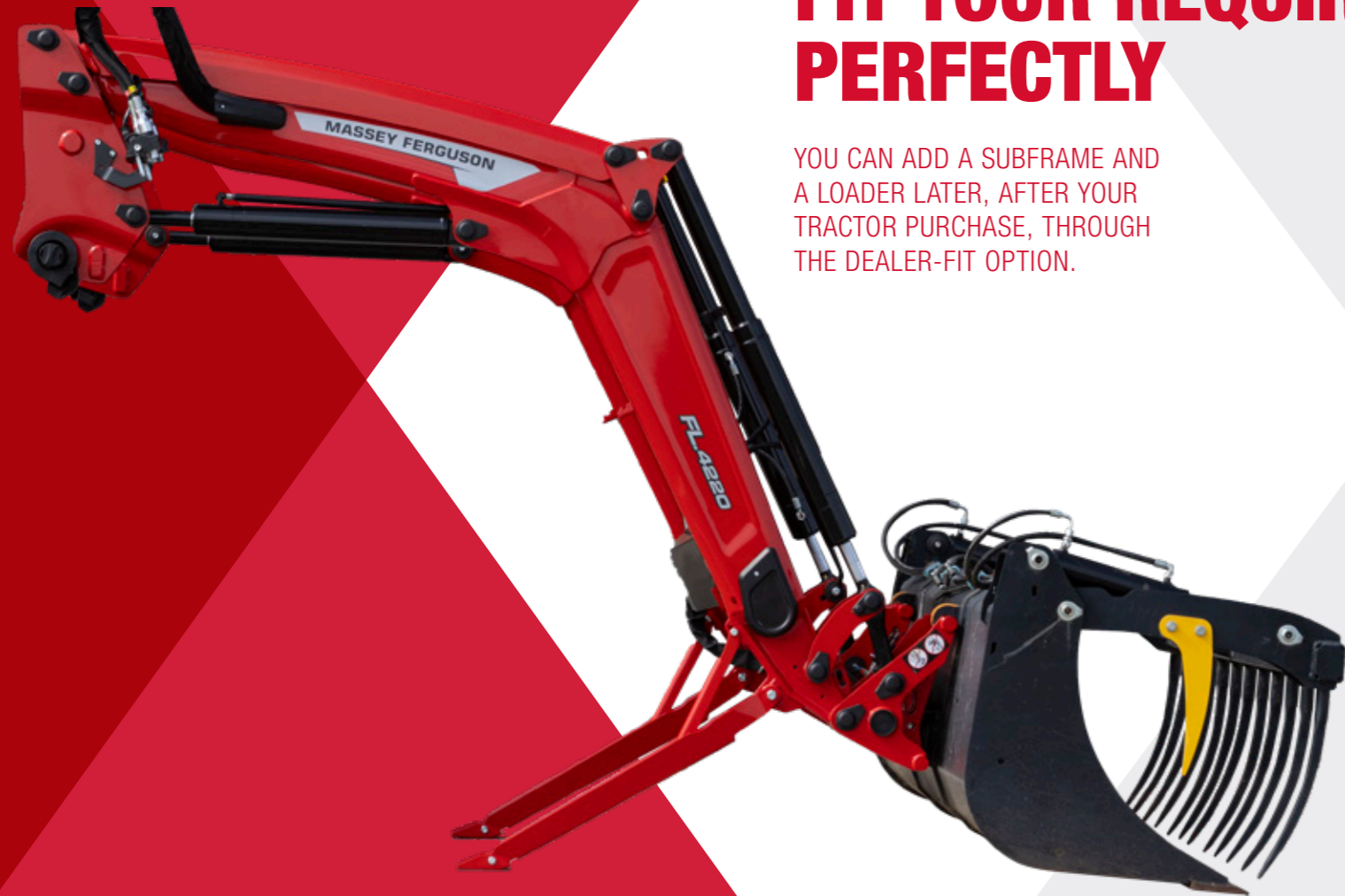


WORKLIGHTS
An optional set of LED worklights is available through MF By You or dealer fit, to give you maximum visibility at night. They're perfectly integrated into the beam and will provide maximum productivity and vision for longer working days.

*: 85 cm on the MF FL.5033

OPTIONS THAT FIT YOUR REQUIREMENTS PERFECTLY

YOU CAN ADD A SUBFRAME AND A LOADER LATER, AFTER YOUR TRACTOR PURCHASE, THROUGH THE DEALER-FIT OPTION.



LOADER CONTROL SYSTEM™ (LCS) - OPTIMISING CONTROL AND DRIVING CHARACTERISTICS

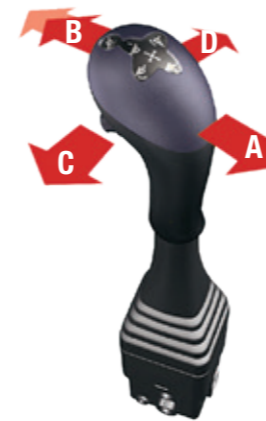
The system features three elements –

- ▶ valve
- ▶ flat-faced couplings
- ▶ joysticks

ADVANTAGES OF THE LCS SYSTEM™

- ▶ Easy to couple the tractor and the loader
- ▶ Complete control of heavy loads thanks to the load-independent oil flow. The loader speed is always the same, no matter what load is carried in the implement
- ▶ Easier to perform multiple functions, such as lowering and crowding
- ▶ Energy-saving low pressure regeneration
- ▶ The cylinders are always filled with oil, which eliminates waiting time and cavitation
- ▶ Both lift and implement circuits feature a float position. In addition to improved driving benefits, this also enables easy connection and disconnection of the loader and implement
- ▶ The compact design means that the valve is ideally placed, while maintaining the driver's visibility

THE MF FL SERIES BENEFITS FROM A CHOICE OF TWO JOYSTICK OPTIONS: THE STRAIGHTFORWARD, MECHANICAL MF FL M-COMMAND AND ERGONOMIC ELECTRO-HYDRAULIC MF FL E-COMMAND. BOTH PROVIDE OPERATORS WITH A HIGH DEGREE OF CONTROL.



'ErgoDrive' main functions:

- A. Lift
- B. Lower
- C. Crowd
- D. Dump

Combined functions:

- A/C. Lift and crowd
- A/D. Lift and dump
- B/D. Lower and dump
- B/C. Lower and crowd
- bucket adjustment to horizontal position



MF FL M-Command

MF FL M-COMMAND offers essential features providing straightforward cable control of your loader:

- ▶ Lift / lower
- ▶ Crowd / dump
- ▶ 3rd function and 4th function
- ▶ Float position (lowering)
- ▶ Suspension on/off
- ▶ Implement locking
- ▶ Two free assignment switches
- ▶ Optional live 3rd.



MF FL E-Command

MF FL E-COMMAND, available from after-sales, offers accurate and efficient single-handed loader control, allowing operators to focus only on the handling task:

- ▶ Lift / lower
- ▶ Crowd / dump
- ▶ 3rd function and 4th function
- ▶ Float position of both lowering and tilt
- ▶ Suspension on/off
- ▶ Implement locking
- ▶ Two free assignment switches
- ▶ Optional live 3rd.

MF FL E-COMMAND fitted with MF FL Companion further eases operation and provides extra features:

- ▶ Loader speed adjustment
- ▶ Continuous pumping on 3rd function
- ▶ Implement position monitoring
- ▶ Bucket Shake function
- ▶ Weighing system
- ▶ Maintenance reminders.

MF FL E-LOADER

LIFTS LOADING EFFICIENCY, ACCURACY, PRODUCTIVITY AND SAFETY

Easily operated through the Datatronic 5 touchscreen, MF E-Loader enables operators to monitor the loader functions, weigh individual loads, automate the grapple operation as well as set-up and save the lift limits.

INSTINCTIVE, EASY CONTROL OF INTELLIGENT AND EFFICIENT LOADER FUNCTIONS VIA DATATRONIC 5 TOUCHSCREEN

MF E-Loader allows operators to adjust the hydraulic flow, pre-set upper and lower lift limits as well as automate operations to deliver the optimum settings for accuracy and efficiency. With its smart, easy-to-use interface the Datatronic 5 terminal screen provides a clear display of loader operations.



AUTOMATED OPERATIONS ENABLE USERS TO PRE-SET LIFT LIMITS AND AUTOMATE REPETITIVE CYCLES

Loading cycles can be simplified with easy-to-set automation. Upper and lower limit lift settings increase productivity and safety during repetitive operations. Users can also automate the bucket inclination, auto-tilt and auto-dump, along with a grab – combining the functions so the grab opens and closes with loader movements. The Bucket Shake function makes it easier to fill and empty loads and can be activated through the loader menu.



AUTOMATIC WEIGHING ON THE MOVE IMPROVES PRECISION, RECORD KEEPING AND COST CONTROL

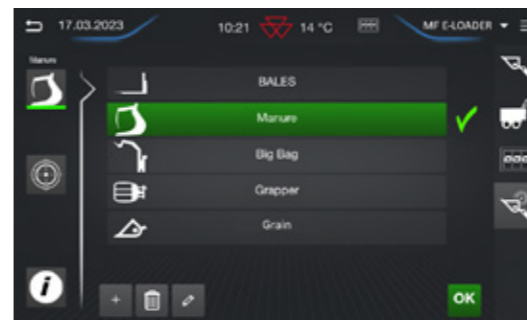
Automatic weighing, on-the-move brings added precision to a range of work – from filling feeder wagons to logging bale weights. It's also useful for accurately recording the weight of bulk-produce that is being either sold off-farm or being bought-in, automatically weighing and storing the information regarding each item, load or job.



COUNTERS INCREASE PRODUCTIVITY, ALLOWING YOU TO FOCUS ON THE LOADING OPERATION

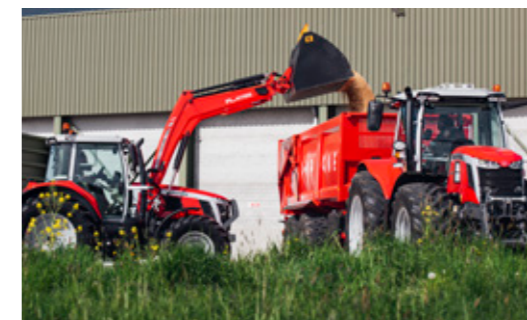
Counters keep a record of work done – either daily or for a complete activity. These can be exported as a simple spreadsheet to keep track of every single activity the loader performs.

For example, the number of individual loads, such as bales moved, along with their average weight.



MEMORIES AND IMPLEMENTS

Up to 20 different counter memories and implement settings can be saved and easily recalled to each user's preferred settings.



MF FL E-LOADER COMPATIBLE ON A LARGE RANGE OF TRACTORS AND LOADERS

Massey Ferguson offers an MF E-Loader-ready option from the factory on a wide range of MF FL parallel and standard loaders to suit all lifting and loading requirements. MF E-Loader is available for the MF 5S, MF 6S, MF 7S and the MF 8S.



MF FL X VERSATILE LOADERS
**FOR EVERYDAY
 OPERATIONS**

UTILITY LOADERS TO COMPLEMENT THE MF
 TRACTORS UP TO 135HP

STRIVING TO MAKE THE JOBS YOU
 DO EVERYDAY EASIER

We never compromise on quality so we only ever provide the best loaders with our machinery.

This range of parallel and non-parallel loaders has been designed specifically for this range of tractors and is the genuine article. Overall design, efficient functionality and clever details enhance this high performance range of machinery to help you get the best out of your working day.

The MF FL X Series of utility loaders offers more benefits than any other range. Usage is simple, effective and enjoyable, for maximum productivity and satisfaction.



MODERN, SIMPLE, FUNCTIONAL

OUR TRACTOR AND LOADER
COMBINATION WORKS IN HARMONY,
INTEGRATING THE MOST MODERN
DESIGN AND AESTHETICS.

TOTAL VISION

Enjoy an unrestricted view of the implement during many applications. The spacious cab and low cross tube on the MF FL X loader ensure the driver's view is never impeded, making light work of loader operations.

All pipes and hoses are securely protected within the loader arm, minimising damage to the hydraulics while maximising visibility.

All pins are extremely strong with large dimensions. They are also zinc coated and can be lubricated.

A pin lock eliminates the risk of the pins rotating.

QUICK AND SIMPLE TO CONNECT AND DISCONNECT

No tools are required for loader attachment and removal which means that no time is wasted in-between tasks. For quick removal, you only need to perform three steps:



▲
STEP 1

Lower parking stands



▲
STEP 2

Unlatch the pins



▲
STEP 3

Disconnect the hydraulic and electrical connections



DELIVERING MORE

MF FL X SERIES LOADERS HAVE BEEN DESIGNED TO MAXIMISE PERFORMANCE



ADJUSTABLE GUIDE

The guide indicates to the operator the position of the implement. It is easily adjustable and, for example, can show when the bucket or pallet forks are parallel to the ground.



AUTOMATIC IMPLEMENT LOCKING WITH SAFELOCK

This smart safety function means that connecting the implement is always achieved with precision and accuracy. The SafeLock function ensures that the implement locking pins are always locked into position.



VERSATILE 3rd HYDRAULIC FUNCTION

This 3rd function maximises the output of the loader and the tractor.



THE SOFT DRIVE SUSPENSION SYSTEM stresses and optimises driver comfort when travelling on uneven ground. Activation is manual, by a tap close to the accumulator.



SUBFRAME

The strong and reliable subframe design links the tractor and the loader. It allows a smooth and easy connection.



ALL PIVOT PINS ARE FITTED WITH GREASERS. Ensures a longer working life.



PIPING IS INTEGRATED INTO THE CHASSIS to avoid damage and ensure a tidy appearance.

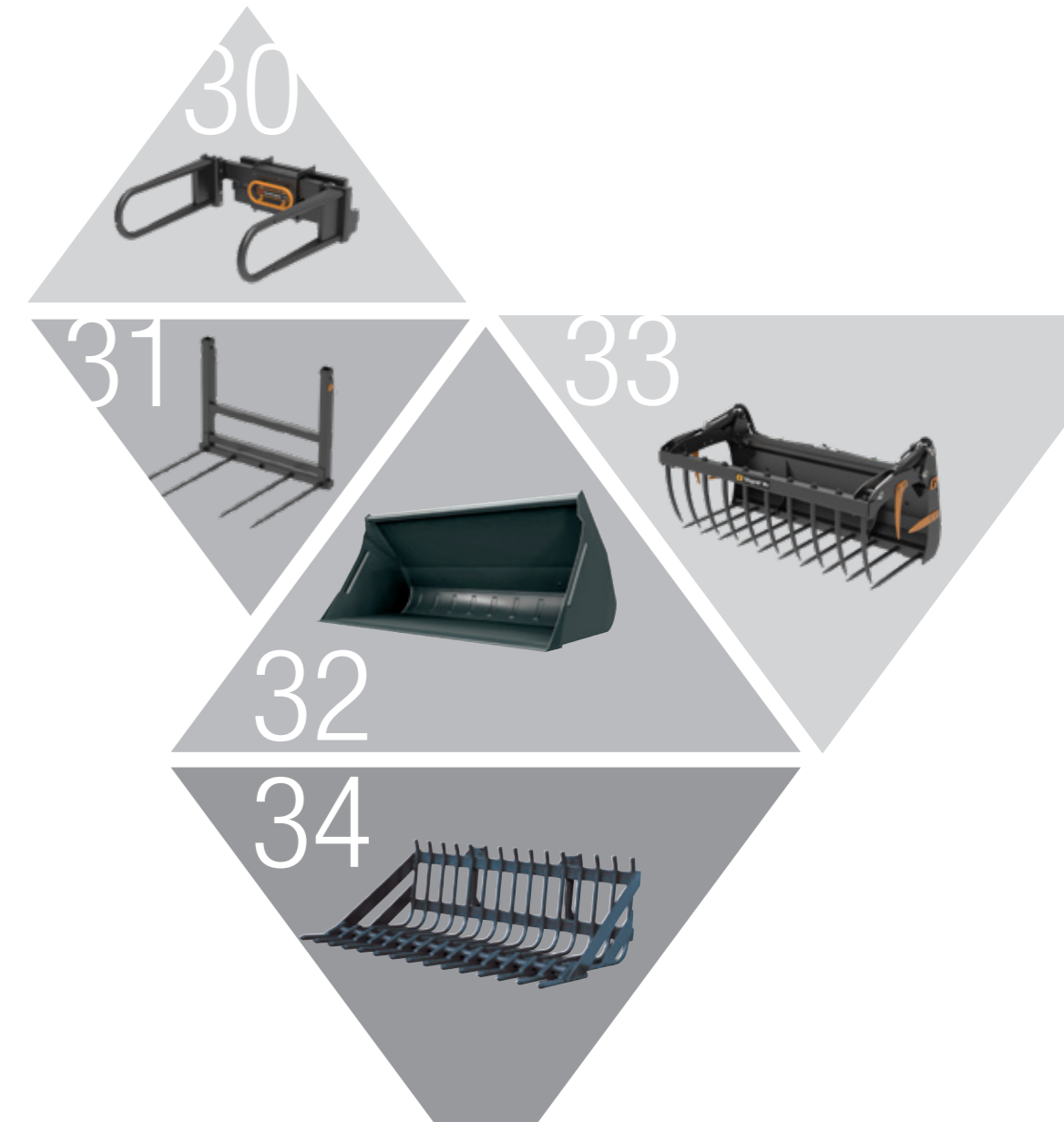


MF FL SERIES LOADER IMPLEMENTS:
THE RIGHT TOOLS FOR THE JOB

MF FL SERIES LOADERS SUIT A WIDE RANGE OF TASKS. TO DO SO, WE OFFER ALL THE NECESSARY ATTACHMENTS.

Our versatile, high quality implements, developed through a rigorous R&D programme, have been organised into six categories for easy reference:

- BALE HANDLING 30**
For square and round bale handling. A highly flexible range, for every situation and budget.
- BUCKETS 31**
A wide range, suitable for virtually all tasks.
- SPECIAL BUCKETS 32**
A wide range of reliable implements from a versatile, multi-purpose bucket to a snow bucket.
- MANURE AND SILAGE 33**
For use in a silo, or clamp. And with diet feeders. Ideal for general silage management and distribution.
- FORKS, LIFTERS AND ACCESSORIES 34**
Safe handling with multi-application pallet forks and a big bag lifter.



BALE HANDLING

THIS COMPREHENSIVE RANGE OF BALE HANDLING IMPLEMENTS HAS BEEN THOUGHTFULLY DESIGNED TO PROVIDE SAFE, EFFICIENT AND RELIABLE OPERATION THROUGH THE COMPLETE SPECTRUM OF BALE HANDLING AND DISTRIBUTION TASKS, FROM FIELD TO YARD.



BALE SPIKE: MAX 1,000 KG

Ensures safe handling of round bales and includes a longer tine for safer bale transport as well as shorter tines to prevent the bale rotating while stacking.



QUADROGRIP TS: 200 CM DIA. MAX BALE SIZE

The market leader in handling round or square bales. The design of the hydraulically operated arms provides independent locking for easy alignment, plus virtually silent operation.



SILOSPPLIT: MAX 1,000 KG

A unique silage bale handler and splitter. Cuts out the hard work of cutting straw and silage bales with one smooth action and without the need for extra, complicated hydraulics.



FLEXIBAL: 180 CM DIA. MAX BALE SIZE

With hydraulic sideways adjustment, 127 mm rotating steel tubes gently cradle wrapped bales, eliminating plastic damage. Once removed, the rotating tubes reveal steel spikes suitable for handling unwrapped bales or pallets up to 1,000 kg.



FLEXIGRIP:

For the gentle handling of wrapped bales and 'end-on' stacking (up to three bales high), thus reducing the risk of air and moisture penetration into the bale. Hydraulically operated arms provide independent locking for easy alignment. Bale sizes from 120 cm up to 200 cm.



UNIGRIP: 130 – 160 CM DIA. MAX BALE SIZE

Proven, 'rounded' design with low net weight and featuring modified arms to spread pressure evenly over the bale. Well suited to handling smaller square bales.

BALE HANDLING AND BUCKETS

SOIL BUCKETS, GENERAL BUCKETS AND VOLUME BUCKETS.



SQUARE BALE FORK

Available in two widths and featuring vertically folding tines for additional safety during transportation and handling. The upper section is designed to eliminate bales falling back, after unloading at full height, when reversing. Optional back-rests and large-bag lifter also available. Available in 2 widths, 140 cm (2 tines) and 190 cm (5 tines).



BALE FORK L+ 150 (FIXED TINES)

High capacity bale fork, the 150 cm wide frame can hold up to five tines. A telescopic extension including two short tines can be specified to safely transport two bales.



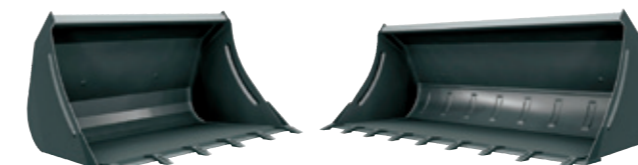
BALE FORK L+ 150 (FOLDABLE TINES)

High capacity bale fork featuring vertically folding tines for extra safety during transport and handling. A telescopic extension including two short tines can be specified to safely transport two bales.



BALE FORK M 180

Excellent support for large bales with the 180 cm wide frame support. The high back frame provides stability to safely handle two bales.



SERIES HT

Soil buckets, with teeth. Similar to the H Series, all the larger buckets in both of these ranges have extra reinforcement between the back and the base. Available in 4 widths from 135 cm (0.54 m³) up to 210 cm (0.82 m³). These buckets are perfectly adapted to handle rocks or to work on hard soil.



SERIES H

Soil buckets, the most popular and flexible in the range. A short bucket base means these are well suited to heavier tasks. Available in 5 widths from 135 cm (0.54 m³) up to 240 cm (0.95 m³).



SPECIAL BUCKETS

A WIDE RANGE OF BUCKETS TO FULFIL SPECIAL APPLICATIONS FROM MULTIPURPOSE BUCKET TO SNOW CLEARING. ASSURED PERFORMANCE FOR ALL TASKS WITH THE PERFECT TRACTOR-LOADER-IMPLEMENT COMBINATION.



SERIES S

The strongest buckets in the whole range. Based upon the H Series but feature: 20% thicker steel, a more powerful cutting edge, plus wider and longer floor reinforcement. Available in 4 widths from 185 cm (0.72 m³) up to 260 cm (1.03 m³).



SERIES V

For users whose tasks require large volumes e.g. carrying grain, beet and feed. The large capacity is achieved through innovative bucket design, being deeper and taller than average. Available in 4 widths from 200 cm (1.16 m³) up to 260 cm (1.85 m³).



SERIES C

An excellent choice for lighter duties and where budgets are limited. Available in 4 widths from 130 cm (0.51 m³) up to 220 cm (1.25 m³).



PRECISION BUCKETS: 209 CM LENGTH – 114 CM WIDTH

Designed for greater control of the emptying of material from the bucket with more precision. There are two versions offered; straight buckets with parallel side gables and conical buckets with a narrower front for even greater precision.



GRADING BUCKET: 140 – 240 CM, 330 – 830 L

Designed to provide excellent driver visibility to the tip of the bucket through its low back plate. Special 10 mm thick angle iron reinforces the 20 mm sub frame plates, making this bucket the ideal implement for grading tasks.



HIGH TIP BUCKET: 240 – 260 CM, 2000 – 2200 L

Increases loading height by 130 cm which means even a short, compact front loader can fill a high trailer. The bucket tips from the front edge, removing the necessity to wait for the front edge to clear the trailer side before reversing.



SNOW BUCKET: 230 CM VOL 1.14 m³

This bucket is the perfect implement for snow clearance. The big volume will give maximum productivity. Two independent hydraulic wings, with plastic shields enable great working accuracy.



MAXI GRAPPLE

A large jaw opening enables it to handle a wide range of materials, including large bales, plus many other types of load. A grappling arm can easily be removed if required. Available in 3 widths, from 210 cm up to 260 cm, with or without teeth.

MANURE AND SILAGE

FROM THE MULTIBENNE, A PERFECT ALL-ROUND SILAGE HANDLING IMPLEMENT, TO THE VERSATILE SILOGRAB, THIS RANGE INCLUDES SOME OF THE MOST RELIABLE AND INNOVATIVE SILAGE HANDLING EQUIPMENT ON THE MARKET TODAY.



PALLET FORKS

Depending on loader dimensions, pallet forks can be specified with either: 97 cm forks (1,000 or 1,600 kg capacity), or 120 cm forks (2,500 kg capacity). The upper profile



is manufactured in one piece and is able to be adjusted laterally to suit the load, which is distributed over a large area thanks to the wide load-bearing surface. This provides a very



stable fork with immense strength. Optional top grabs and spike attachments can also be fitted. A hydraulic pallet width adjustment is also available. Once fitted, the operator can



change the width of the forks when staying in the cab.



POWERGRAB: 185 – 260 CM 1.01 – 1.40M³

Designed for silage clamp operations, Powergrab's wide jaw opening allows it to work against a vertical silage wall, while its conical bucket design ensures free discharge when emptying.



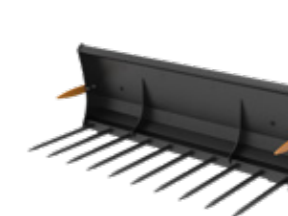
MULTIBENNE M+: 130 – 250 CM 0.69 – 1.27 m³

A perfect all-round silage implement, from loading diet feeders to shovelling manure and other materials. Available with Bolt on side gables.



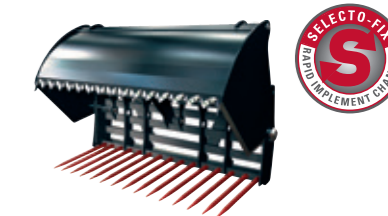
SILOGRAB M+: 170 – 250 CM 0.9 – 1.27 m³

The tines of this implement are mounted within a hardened box section, their close distribution eliminating silage spillage. Upper jaw tines follow a circular movement producing a clean cut.



MANURE FORK M+: 130 – 230 CM 7 – 12 TINES

Manufactured with a specially hardened box section. The tines are fitted prior to painting and secured with a very high torque. A top performer with a long service life.



SILOCUT SE

Produces perfect silage blocks in seconds. Hardened cutting blades at both the front and side produce a clean cut surface in the clamp, critical for maintaining silage quality. Available in 4 capacities, from 0.72 m³ up to 1.38 m³.

FORKS, LIFTERS AND ACCESSORIES

AN INDISPENSABLE BIG BAG LIFTER WITH A CLEVER DESIGN FEATURE, PLUS SEVERAL ESSENTIAL ACCESSORIES, COMPLETE THE MF FL LOADER IMPLEMENT RANGE.



UNIVERSAL FORK

Without doubt the most powerful universal/stone fork on the market. It offers excellent visibility whilst retaining exceptional strength. The side forks feature ultra-hardwearing teeth. Available in 2 widths, 150 cm and 200 cm.



PROFESSIONAL STONE FORK

A heavy-duty fork, specially designed to retain the material in the bucket after loading. The leading edge has replaceable, downward facing teeth fixed to a rigid, high quality framework. Available in 2 widths, 150 cm and 200 cm.



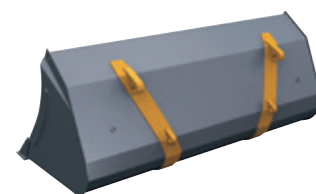
3-POINT LINKAGE

Can be used in a similar way to a tractor's 3-point linkage to help transport implements around the farm.



BIG BAG LIFTER

Designed with a hook that is slightly offset to the side, giving the operator an unimpaired view when connecting with the bag handle. Has a width of 120 cm, a height of 170 cm and a maximum loading of 1,000 kg.



EURO HOOKS

Weld-on Euro Hooks allow any implement to be modified for use on MF FL X Series Loaders.



MULTIPURPOSE BUCKET

A high quality versatile bucket built to achieve many tasks: Standard bucket, hightip bucket, clamp, grading bucket. Available from 160 to 210 cm width.



COUNTERWEIGHT

An essential accessory. This high quality counterweight can be fitted and removed easily. Two sizes are available, 800 kg or 1,500 kg maximum ballasted weight. Supplied without ballast.



TRACTOR/LOADER RECOMMENDATIONS FOR PARALLEL LOADER

Models	FL.3615	FL.3619	FL.3817	FL.3819	FL.3823	FL.4018	FL.4121	FL.4124	FL.4220	FL.4323	FL.4327	FL.4621	FL.4624	FL.4628	FL.4722	FL.5033
MF 3AL	•	•	-	-	-	-	-	-	-	-	-	-	-	-	-	-
MF 4700 M *	•	-	•	-	-	-	-	-	-	-	-	-	-	-	-	-
MF 5M **	-	-	-	•	•	•	•	-	•	-	-	-	-	-	-	-
MF 5S 3*,4*	-	-	-	•	•	•	•	•	•	-	-	-	-	-	-	-
MF 6S 5*	-	-	-	-	-	-	•	•	•	•	•	•	-	-	-	-
MF 7S. 155-180 6*	-	-	-	-	-	-	-	-	-	•	•	•	•	-	-	-
MF 7S. 190 - 210 6*	-	-	-	-	-	-	-	-	-	•	•	•	•	•	•	-
MF 8S 7*,8*	-	-	-	-	-	-	-	-	-	•	•	•	•	•	•	•
MF 9S 9*	-	-	-	-	-	-	-	-	-	-	-	-	-	-	-	•

TRACTOR/LOADER RECOMMENDATIONS FOR MF FL X LOADER

Models	UTILITY PARALLEL MODELS				UTILITY NON-PARALLEL MODELS			
	FL.3114X	FL.3416X	FL.3717X	FL.3919X	FL.3117X	FL.3419X	FL.3720X	FL.3922X
MF 3AL	•	•	-	-	•	•	-	-
MF 4700 M	-	•	-	-	-	•	•	-
MF 5M	-	-	•	•	-	-	•	•

NOTES

- Available
- Non Applicable
- * FL 3817 fitment, front track setting maximum = 1,750 mm
- ** FL 3823/FL 4220 fitment, front track setting maximum = 1,900 mm
- 3* FL 4121 fitment, front track setting maximum = 1,820 mm
- 4* FL 3819 / FL 3823 must be specified with extended bearing box if tractor is equipped with front lift / for tractor equipped without front lift, max tyre 380/85R24 or equivalent
- 5* FL 4121/FL 4124/FL 4220, loader must be specified with extended bearing boxes except if tractor is specified without front linkage
- 6* FL 4323 / FL 4327 must be specified with extended bearing box except if tractor is specified without front lift
- 7* FL 5029/FL 5033 not compatible with factory fitted subframe, tractor needs to be specified with gross vehicle weight 16T
- 8* FL 4323/FL 4327, loader must be specified with extended bearing boxes
- 9* Subframe not fitted in factory

TRACTOR/LOADER RECOMMENDATIONS FOR NON-PARALLEL LOADER

Models	FL.3522	FL.3723	FL.4125	FL.4227
MF 3AL	•	-	-	-
MF 4700 M	•	-	-	-
MF 5M	-	•	•	-
MF 5S	-	•	•	-
MF 6S *	-	-	•	•
MF 7S. 155 - 180 **	-	-	-	•

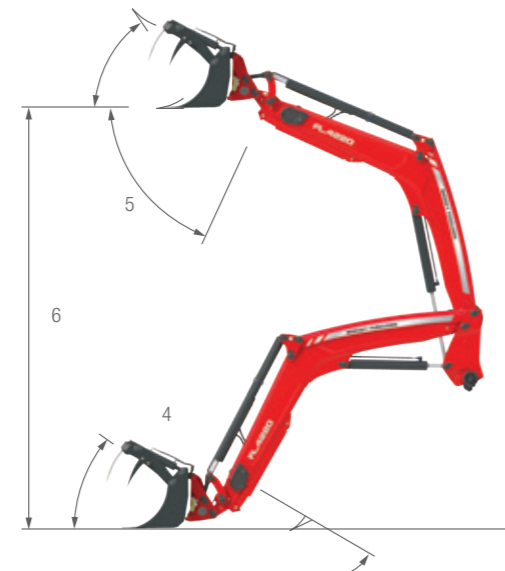
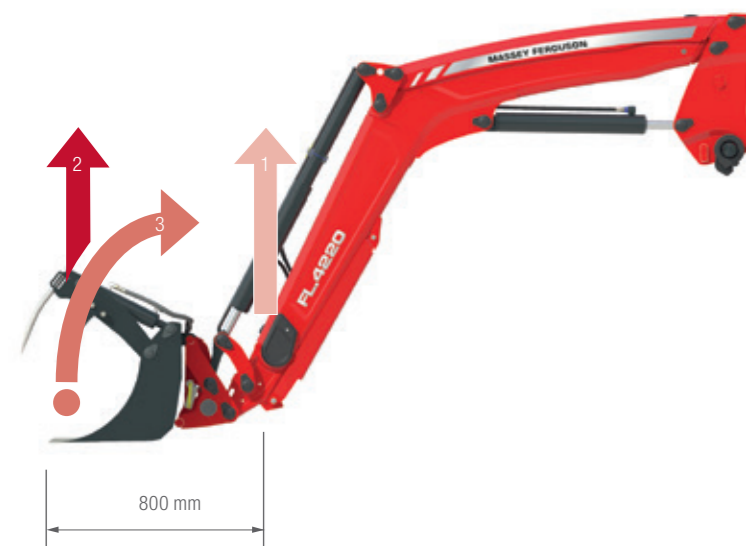
NON-PARALLEL MODELS

	NOTES	MF FL.3522	MF FL.3723	MF FL.4125	MF FL.4227
Lift height					
Maximum lift height - measured at pivot pin	m	3.55	3.79	4.06	4.25
Maximum lift height - under level bucket	m	3.25	3.49	3.76	3.95
Loader forces					
Lift capacity to 1.5 m height - at pivot pin	kg	2,220	2,310	2,470	2,730
Lift capacity to maximum height at pivot pin	kg	2,000	2,050	2,050	2,360
Breakout force - at pivot pin	kg	2,570	2,640	2,890	3,090
Lift capacity to maximum height - 800 mm from pivot pin	kg	1,250	1,290	1,300	1,590
Lift capacity, 1.5 m height - 800 mm from pivot pin	kg	1,650	1,720	1,870	2,110
Breakout force - 800 mm from pivot pin	kg	1,790	1,850	2,070	2,270
Rollback force at ground level - 800 mm forward of pivot pin*	kg	2,430	3,420	3,420	4,030
Angles					
Maximum dump angle at maximum height	deg	58	58	56	57
Maximum roll-back angle at ground level	deg	48	48	48	48
Rams diameter					
Lift cylinders (lifting rams diameter)	mm	75	80	85	90
Bucket cylinders (tilting rams diameter)	mm	75	85	85	90
Weight					
Weight - front loader w/o implement	kg	450	515	560	630

- Available
- Non Applicable
- * FL 4125, loader must be specified with extended bearing boxes except if tractor is specified without front linkage
- ** FL.4227 must be specified with extended bearing box except if tractor is specified without front lift

PARALLEL MODELS

		NOTES	MF FL.3615	MF FL.3619	MF FL.3817	MF FL.3819	MF FL.3823	MF FL.4018	MF FL.4121
Lift height									
Maximum lift height - measured at pivot pin	m		3.55	3.55	3.81	3.79	3.79	4.02	4.06
Maximum lift height - under level bucket	m	6	3.25	3.25	3.51	3.49	3.49	3.72	3.76
Loader forces									
Lift capacity to 1.5 m height - at pivot pin	kg		1,540	1,850	1,690	1,930	2,270	1,780	2,090
Lift capacity to maximum height at pivot pin	kg	1	1,370	1,660	1,540	1,710	2,020	1,570	1,720
Breakout force - at pivot pin	kg		1,810	2,160	1,970	2,220	2,600	2,040	2,460
Lift capacity to maximum height - 800 mm from pivot pin	kg		1,550	1,850	1,740	1,920	2,260	1,780	1,980
Lift capacity, 1.5 m height - 800 mm from pivot pin	kg	2	1,570	1,870	1,760	1,940	2,280	1,820	2,100
Breakout force - 800 mm from pivot pin	kg	2	1,630	1,960	1,830	1,990	2,320	1,910	2,290
Rollback force at ground level - 800 mm forward of pivot pin	kg	3	2,390	2,870	3,430	3,360	3,360	3,400	3,370
Angles									
Maximum dump angle at maximum height	deg	5	58	58	53	58	58	54	57
Maximum rollback angle at ground level	deg	4	48	48	50	48	48	49	48
Maximum re-scooped rollback angle (700 mm from ground level)	deg	4	58	58	58	58	58	60	58
Rams diameter									
Lift cylinders (lifting rams diameter)	mm		70	75	75	75	80	75	80
Bucket cylinders (tilting rams diameter)	mm		75	80	85	85	85	85	85
Weight									
Weight - front loader w/o implement	kg		520	520	525	575	575	580	620



- 1 Lifting force at pivot pin
- 2 Lifting force 800 mm from pivot pin
- 3 Max. rollback force 800 mm from pivot pin

MF FL.4124	MF FL.4220	MF FL.4323	MF FL.4327	MF FL.4621	MF FL.4624	MF FL.4628	MF FL.4722	MF FL.5033
4.06	4.2	4.25	4.25	4.55	4.6	4.6	4.75	4.96
3.76	3.90	3.95	3.95	4.25	4.30	4.30	4.45	4.66
2,430	2,000	2,310	2,680	2,070	2,420	2,780	2,230	3,270
2,010	1,650	1,980	2,310	1,800	2,050	2,360	1,840	2,510
2,850	2,350	2,640	3,040	2,340	2,760	3,150	2,540	3,860
2,300	1,930	2,140	2,470	1,980	2,170	2,490	2,000	2,590
2,440	2,020	2,350	2,700	2,110	2,460	2,810	2,280	2,810
2,640	2,160	2,470	2,840	2,230	2,620	2,990	2,430	3,630
3,910	3,420	3,400	4,540	4,000	3,970	4,600	4,580	4,510
57	54	57	57	53	54	54	53	53
48	49	48	48	52	49	49	51	47
58	58	58	58	59	58	58	57	58
85	80	85	90	85	90	95	90	95
90	85	85	95	90	90	100	100	100
620	625	720	720	750	760	760	820	830

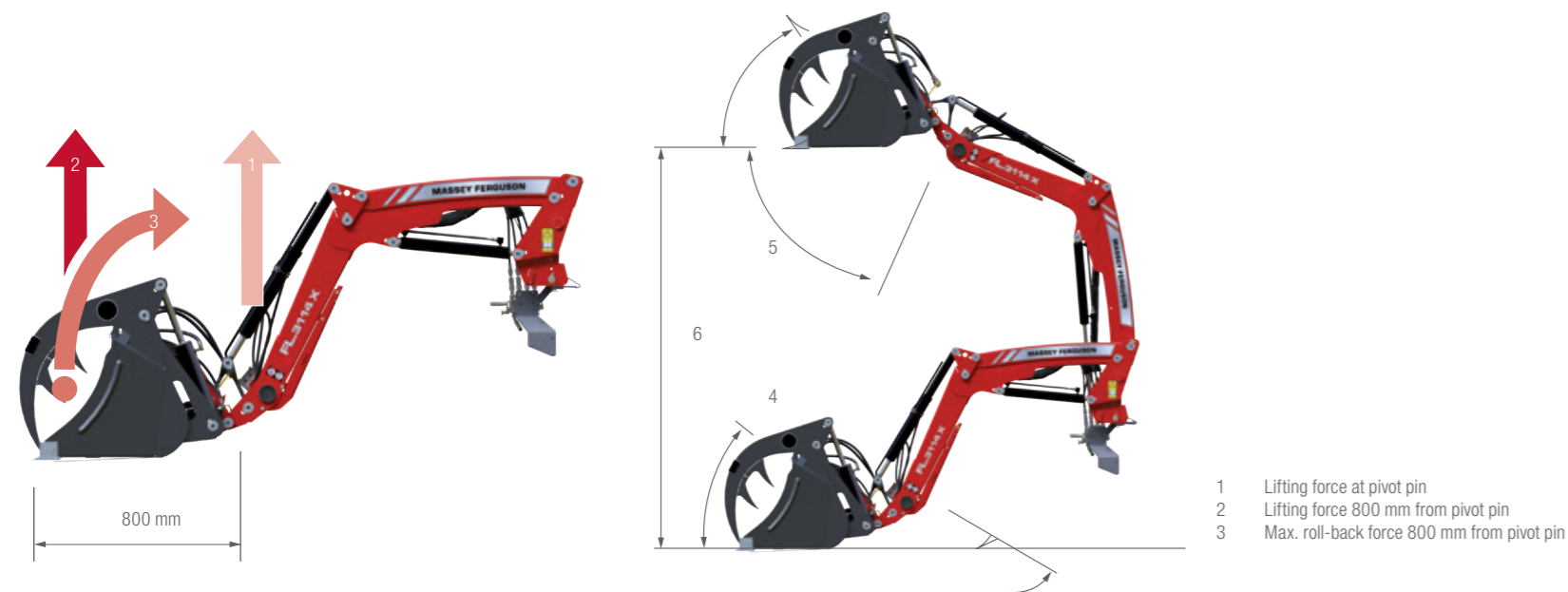
MF FL X MODELS

UTILITY MODELS PARALLEL

	NOTES	MF FL.3114 X	MF FL.3416 X	MF FL.3717 X	MF FL.3919 X	
Lift height						
Maximum lift height - measured at pivot pin	m	3.10	3.40	3.70	3.90	
Maximum lift height - under level bucket	m	6	2.90	3.20	3.50	3.70
Loader forces						
Lift capacity to 1.5 m height - at pivot pin	kg	1	1,350	1,540	1,720	1,890
Lift capacity to maximum height at pivot pin	kg	1	1,090	1,260	1,360	1,450
Breakout force - at pivot pin	kg		1,800	1,950	2,170	2,370
Lift capacity to maximum height - 800 mm forward of pivot pin	kg		1,220	1,520	1,590	1,680
Lift capacity to 1.5 m height - 800 mm forward of pivot pin	kg	2	1,400	1,560	1,710	1,890
Breakout force - 800 mm forward of pivot pin	kg		1,580	1,660	1,850	2,080
Rollback force at ground level - 800 mm forward of pivot pin	kg	3	1,910	1,890	2,280	2,740
Angles						
Maximum dump angle at maximum height	deg	4	50	50	49	46
Maximum roll-back angle at ground level	deg	5	42	44	42	43
Rams diameter						
Lifting rams diameter	mm		60	65	70	75
Tilting rams diameter	mm		70	70	75	80
Weight						
Weight (standard configuration)	kg		360	390	420	440

UTILITY NON-PARALLEL MODELS

MF FL.3117 X	MF FL.3419 X	MF FL.3720 X	MF FL.3922 X
3.10	3.40	3.70	3.90
2.90	3.20	3.50	3.70
1,690	1,880	2,070	2,240
1,380	1,550	1,650	1,740
2,210	2,360	2,580	2,790
870	970	1,010	1,080
1,210	1,370	1,520	1,670
1,450	1,600	1,770	1,960
1,880	1,910	2,300	2,760
50	50	49	46
42	44	42	43
65	70	75	80
65	70	75	80
310	335	360	390





MASSEY FERGUSON

www.MasseyFerguson.co.uk

www.facebook.com/masseyfergusonUK

x.com/MF_EAME

[Instagram.com/MasseyFergusonUK](https://www.instagram.com/MasseyFergusonUK)

www.youtube.com/@masseyfergusonukeire



MASSEY FERGUSON® is a worldwide brand of AGCO.
© AGCO Corporation | A-A-18085 | English 2025



BORN TO **FARM**